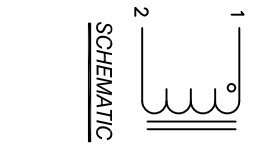


The information contained in this drawing is the sole property of Coil Winding Specialist, Inc. Any reproduction in part or whole without written permission of Coil Winding Specialist, Inc. is prohibited.



DC-BIAS	L
0A	120uH
120A	102uH
210A	91uH
300A	77uH
400A	67uH
450A	63uH

DIMENSIONAL TOLERANCES INCHES (MM)									
A	C	L1	L	W	H	C1	C2		
TYP	TYP	TYP	MAX	MAX	MAX	NOM	NOM		
4.00 (101.6)	0.50 (12.70)	11.00 (279.40)	16.54 (420.00)	4.65 (118.10)	3.80 (96.50)	25.00 (635.00)	7.00 (177.80)		

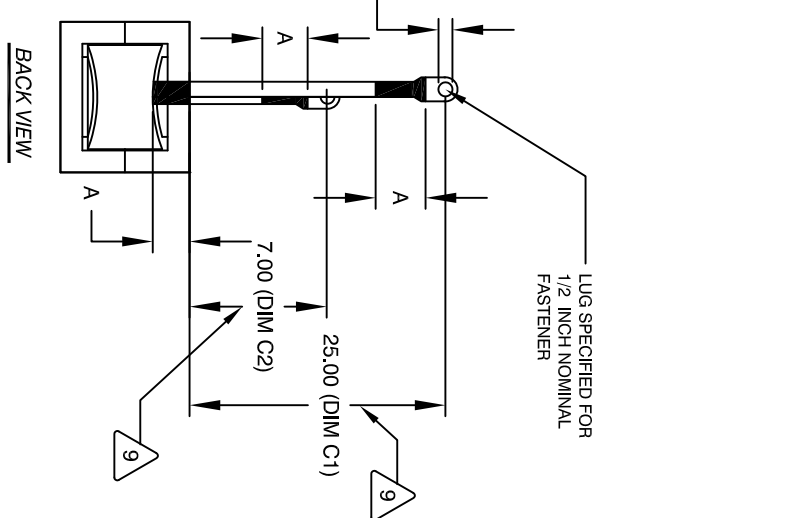
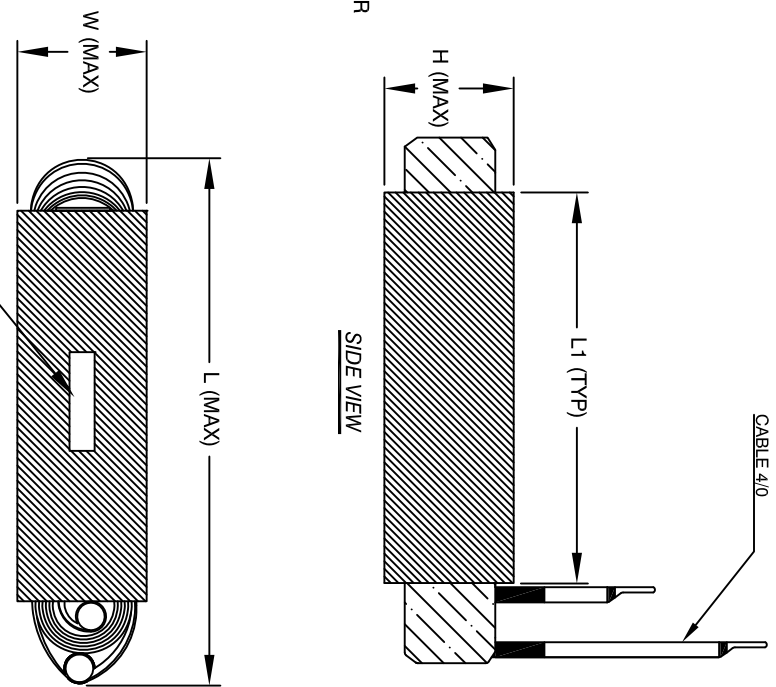
REVISION HISTORY				SIGN & DATE			
REV	ECN	DESCRIPTION	BR	DATE	CHK	DATE	
A		PRODUCTION RELEASE	TN	03/21/18	JL	03/21/18	
B1		UPDATED DOCUMENT	TN	04/05/21	JL	04/05/21	
B2		UPDATED SPEC.	TN	11/02/21	JL	11/02/21	

- 6 C1 AND C2 ON THE DIMENSION TOLERANCES TABLE CORE TO CENTERPOINT OF HOLE LUG. THESE LENGTHS ARE
- 9 CABLE LENGTH MEASURED FROM TOP OF FINISHED
- 8 APPLICATION: OUTPUT CHOKE, HIGH CURRENT INDUCTOR, INPUT FILTER
- 7 BUILT TO ROHS COMPLIANCE

- 6 LABEL PART NUMBER AND REVISION WHERE SHOWN
- 5 VARNISHED AND CURE
- 5 APPLY SILICON IF REQUIRED
- 5 WRAP TAPE AROUND CORES
- 5 WITH CORES AND NOMEX
- 5 PRE FORMED FLAT COPPER SHEETS
- 4 CONSTRUCTION:

- WEIGHT: 46 LB (Typ)
- RECOMMENDED OPERATING FREQUENCY: 60Hz TO 500KHz
- RECOMMENDED AMBIENT OPERATING TEMP: -40°C TO 105°C
- HI-POT TEST FROM WINDING TO CORE 1000VDC @ 2mA, 1 MIN
- INTERWINDING CAPACITANCE @ SRF = 256pF (Typ)
- |Z|@SRF=8.51 KILLO-OHM
- SRF=790 KHz
- RATED CURRENT: 450 AMPS, APPROPRIATE AIR FLOW NEEDED.
- DCR = 1.35 MILLI-OHM MAX.
- L@DC BIAS: SEE TABLE ON RIGHT.
- L=120uH ± 10%, MEASURED AT 1 KHz, 0.25V, ZERO DC BIAS
- SPECIFICATIONS:
- 3 BAKE VARNISH
- SILICON DOW CORNING OR EQUAL
- OUTER WRAP: 3M GLASS OR EQUAL
- 2 CORE: COMPACTED POWDERED CORE
- 1 MATERIAL: UL RECOGNIZED

NOTES: UNLESS OTHERWISE SPECIFIED READ FROM BOTTOM UP.
 CAGE CODE: 5DME2



PARTS LIST		AUTOCAD		TITLE		SCALE	
UNLESS OTHERWISE SPECIFIED	DRAWING AND TOLERANCE PER ANSI Y14.5M AND (DIMETERS).	SIGN	DATE	www.coilws.com sales@coilws.com	353 W. GROVE AVE ORANGE, CA 92665	NOT_TO_SCALE	SHEET 1 OF 1
TOLERANCE INCHES: .XXX=±.010 .XX=±.020 TOLERANCE METRICS: .XXX=±.254 .XX=±.51 <td>ALL DIMENSIONS ARE IN INCHES</td> <td>JL</td> <td>12/18/17</td> <td>High Current Inductor</td> <td></td> <td></td> <td></td>	ALL DIMENSIONS ARE IN INCHES	JL	12/18/17	High Current Inductor			
ANGLE PROJECTION		JLAV	12/18/17	High Frequency Inductor			
DO NOT SCALE DRAWING		BO	12/18/17	120 uH, 450 Amps			