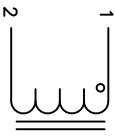


REVISION HISTORY

REV	ECN	DESCRIPTION	BY	DATE	CHK	DATE
A	150609	PRODUCTION RELEASE	AK	6/10/15	JLJU	6/10/15



SCHEMATIC

- 8 APPLICATION: OUTPUT CHOKE, HIGH CURRENT INDUCTOR, INPUT FILTER
- 7 BUILT TO ROHS COMPLIANCE

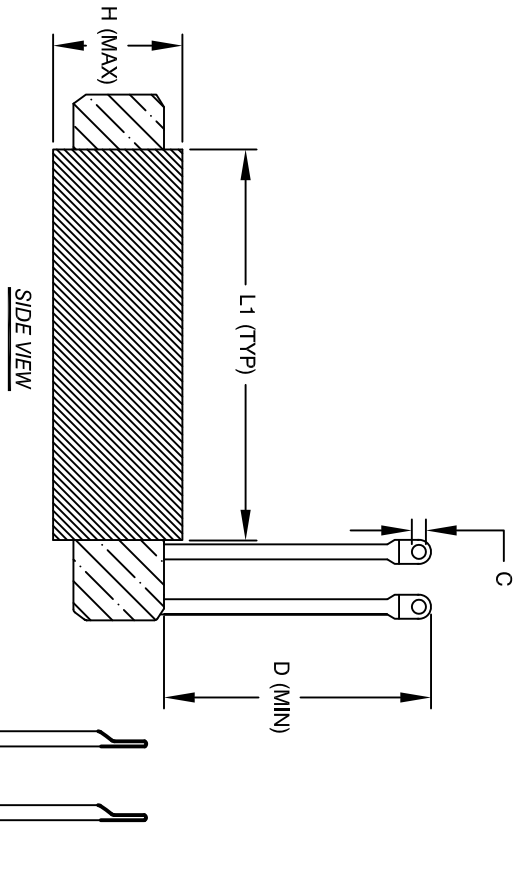
- 6 LABEL PART NUMBER AND REVISION WHERE SHOWN

- 5 VARNISHED AND CURE
APPLY SILICON IF REQUIRED
WRAP TAPE AROUND CORES
WITH CORES AND INSULATOR
PRE FORMED FLAT COPPER SHEETS
CONSTRUCTION:

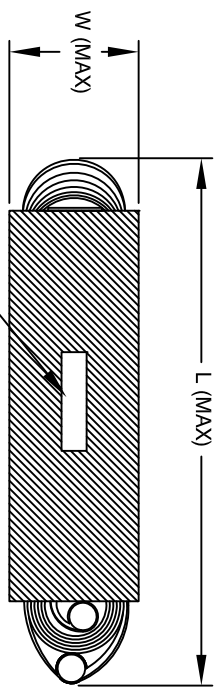
- 4 WEIGHT: 46 LB (TYP)
RECOMMENDED OPERATING FREQUENCY: 60HZ TO 500KHZ
RECOMMENDED AMBIENT OPERATING TEMP: -40°C TO 105°C
HI-POT TEST FROM WINDING TO CORE 1000VDC @ 2mA, 1 MIN
INTERWINDING CAPACITANCE @ SRF = 249PF (TYP)
|Z| @ SRF = 2.31 KIL-OHM
SRF = 732 KHZ
RATED CURRENT: 300 AMPS
DCR = 1.2 MILLIOHM MAX.
L @ DC BIAS: SEE TABLE ON RIGHT.
L = 210uH ± 12%, MEASURED AT 1 KHZ, 0.25V, ZERO DC BIAS
SPECIFICATIONS:
- 3 VARNISH
- 2 SILICON DOW CORNING OR EQUAL
OUTER WRAP: 3M GLASS OR EQUAL
CORE: COMPACTED POWDERED CORE
- 1 MATERIAL: UL RECOGNIZED

NOTES: UNLESS OTHERWISE SPECIFIED READ FROM BOTTOM UP.

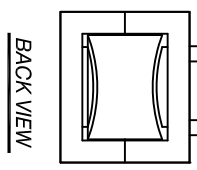
CAGE CODE: 5DME2



SIDE VIEW



TOP VIEW



BACK VIEW

DIMENSIONS AND TOLERANCE

	mm	inch
C	12.7 (TYP)	0.50 (TYP)
D	304.8(MIN)	12.00 (MIN)
L1	279.4 (TYP)	11.00 (TYP)
L	393.7 (MAX)	15.5 (MAX)
W	118.1 (MAX)	4.65 (MAX)
H	96.5 (MAX)	3.80 (MAX)

DC-BIAS	L
0A	210uH
30A	184uH
60A	153uH
90A	133uH
120A	129uH
150A	120uH
180A	112uH
210A	99uH
240A	83uH
270A	70uH
300A	60uH

PARTS LIST

UNLESS OTHERWISE SPECIFIED	AUTOCAD SOLIDWORKS	X	www.coilws.com	Coil Winding Specialist, Inc.
DIMENSIONING AND TOLERANCE PER ANSI Y14.5M	DRWN	AK	6/09/15	353 W. GROVE AVE
ALL DIMENSIONS ARE IN INCHES AND [MILLIMETERS].	ENGR	JLJU	6/09/15	ORANGE, CA 92665
TOLERANCE INCHES: .XXX=±.010 .XX=±.020 .X=±.030 .XXX=±.254 .XX=±.51	APPR	BO	6/09/15	
ANGLE PROJECTION	SCALE	NOT_TO_SCALE	SHEET	1 OF 1