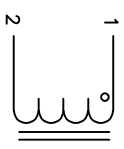


DIMENSIONAL TOLERANCE (IN/MM)					
C	D	L1	L	W	H
(TYP)	(MIN)	(TYP)	(MAX)	(MAX)	(MAX)
0.50	12.00	11.00	15.50	4.65	3.80
[12.70]	[304.80]	[279.40]	[393.70]	[118.11]	[96.52]

REVISION HISTORY			
REV	ECN	DESCRIPTION	DATE
A		PRODUCTION RELEASE	07/25/23



SCHEMATIC

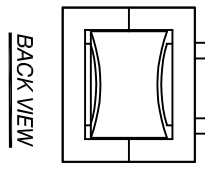
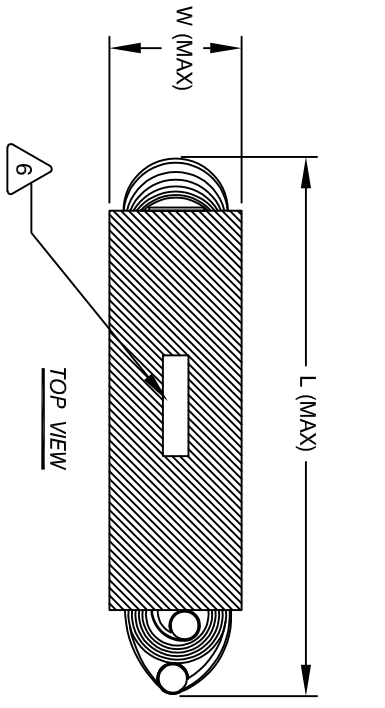
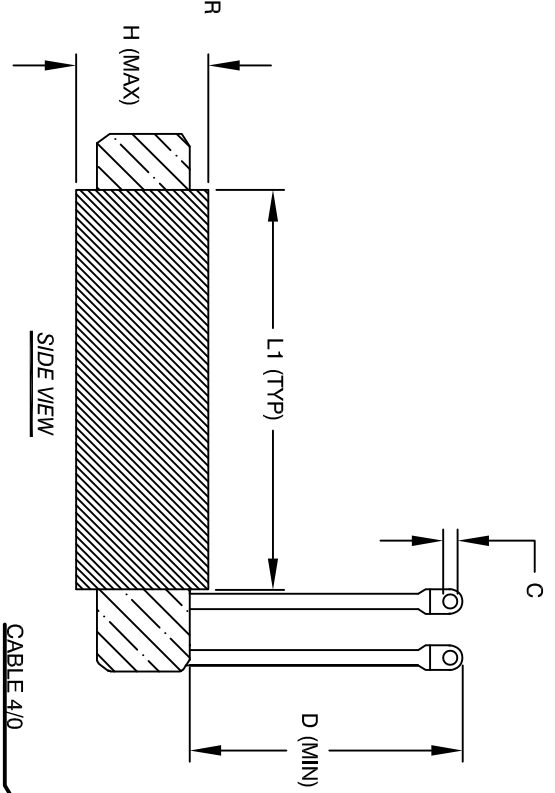
- 8 APPLICATION: OUTPUT CHOKE, HIGH CURRENT INDUCTOR, INPUT FILTER
- 7 BUILT TO ROHS COMPLIANCE
- 6 LABEL PART NUMBER, REVISION AND DATE CODE WHERE SHOWN

- 5 APPLY SILICONE AS NEEDED
- 4 CONSTRUCTION:

- 3 SPECIFICATIONS:

- 2 CORE: COMPACTED POWDERED CORE
- 1 MATERIAL: UL RECOGNIZED

ANY TOLERANCE. THIS DIM. CAN VARY A LITTLE FROM PART TO PART.
 "TYP" IN DIM. TOL. REFERS TO A NON-CRITICAL TYPICAL (AVERAGE) DIM. WITHOUT
 NOTES: UNLESS OTHERWISE SPECIFIED, READ FROM BOTTOM UP.
 CAGE CODE: 5DME2



DC BIAS TABLE

DC-BIAS	L (REF)
0A	630uH
25A	615uH
50A	573uH
75A	527uH
100A	474uH
125A	423uH
150A	375uH
175A	333uH
200A	296uH
225A	264uH
250A	236uH
275A	212uH
300A	190uH
325A	172uH
350A	156uH
375A	142uH
400A	130uH
425A	120uH
450A	110uH

UNLESS OTHERWISE SPECIFIED		AUTOCAD		X	
DIMENSIONING AND TOLERANCE PER ANSI Y14.5M		SOLIDWORKS		SIGN	
ALL DIMENSIONS ARE IN INCHES AND [MILLIMETERS]		DRWN		TN	
TOLERANCE INCHES: .XXX±.010 .XX±.020		ENGR		JM	
TOLERANCE METRICS: .XXX±.254 .XX±.51		APPR		JL	
ANGLE PROJECTION		DATE		07/25/23	
DO NOT SCALE DRAWING		DATE		07/25/23	
TITLE:		www.coilw.com		Coil Winding Specialist, Inc.	
High Current Inductor		353 W GROVE AVE		ORANGE, CA 92865	
630 uH, 450 Amps		SCALE		NOT_TO_SCALE	
SIZE DIM. NO.		B		HCS-631M-450A-3KV	
SHEET		1		OF 1	
REV		A			