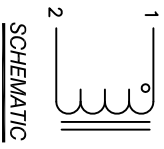


The information contained in this drawing is the sole property of Coil Winding Specialist, Inc. Any reproduction in part or whole without written permission of Coil Winding Specialist, Inc. is prohibited.



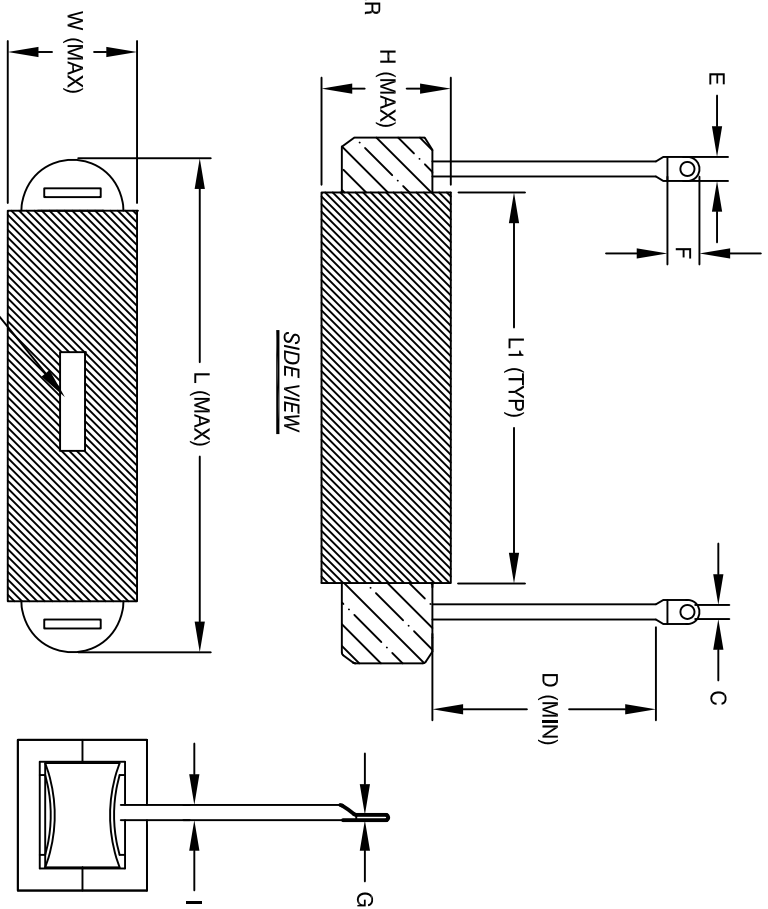
DIMENSIONAL TOLERANCES (INCHES (MM))									
C	D	E	F	G	I	L	L1	W	H
0.50 [12.70]	12.50 [317.50]	1.00 [25.40]	1.10 [27.94]	0.15 [3.81]	0.75 [19.05]	11.50 [292.10]	8.25 [209.55]	4.70 [119.38]	3.90 [98.62]

REVISION HISTORY			
REV	ECN	DESCRIPTION	DATE
A		PRODUCTION RELEASE	07/20/17

- 8 APPLICATION: OUTPUT CHOKE, HIGH CURRENT INDUCTOR, INPUT FILTER
- 7 BUILT TO ROHS COMPLIANCE
- 6 LABEL PART NUMBER AND REVISION WHERE SHOWN
- 5 VARNISHED AND OVEN CURED
- 4 APPLY SILICON AS REQUIRED

- 3 WRAP TAPE AROUND CORES WITH CORES AND NOMEX PRE FORMED FLAT COPPER FOIL CONSTRUCTION:
- 2 WEIGHT: 30 LB 11.5 OZ (TYP)
RECOMMENDED OPERATING FREQUENCY: 60HZ TO 500KHZ
RECOMMENDED AMBIENT OPERATING TEMP: -40°C TO 105°C
HI-POT TEST FROM WINDING TO CORE 1000VDC @ 2mA, 1 MIN
INTERWINDING CAPACITANCE @ SRF = 208pF (TYP)
|Z|@SRF=1.2 KILO-OHM
SRF=1.2 MHZ
RATED CURRENT: 280 AMPS, APPROPRIATE AIR FLOW NEEDED.
DCR= 1 MILLIOHM MAX.
L@DC BIAS: SEE TABLE ON RIGHT.
INDUCTANCE=85uH ± 10% NOM., MEASURED AT 1 KHZ, 0.25V, ZERO DC BIAS SPECIFICATIONS:
- 1 BAKE VARNISH
SILICON DOW CORNING OR EQUAL
OUTER WRAP: 3M GLASS OR EQUAL
CORE: COMPACTED POWDERED CORE
MATERIAL: UL RECOGNIZED

NOTES: UNLESS OTHERWISE SPECIFIED READ FROM BOTTOM UP.
CAGE CODE: 5DME2



DC-BIAS	L
0A	85uH
25A	90uH
50A	86uH
75A	75uH
100A	69uH
125A	57uH
150A	53uH
175A	51uH
200A	49uH
225A	46uH
250A	44uH
275A	42uH
280A	40uH

PARTS LIST

UNLESS OTHERWISE SPECIFIED		AUTOCAD SOLIDWORKS	
DRAWING AND TOLERANCE PER ANSI Y14.5M AND [MILLIMETERS].	DATE	SIGN	DATE
TOLERANCE INCHES: XXX±.010 .X±.020 TOLERANCE METERS: XXX±.254 .XX±.51	07/20/17	JL	07/20/17
ANGLE PROJECTION	07/20/17	JL	07/20/17
DO NOT SCALE DRAWING	07/20/17	JL	07/20/17