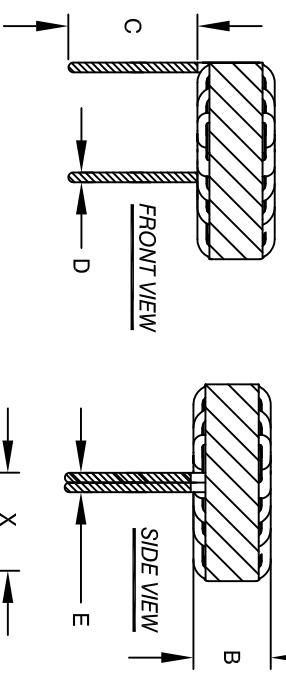


The information contained in this drawing is the sole property of CMS Coil Winding Specialist. Any reproduction in part or whole without written permission of CMS Coil Winding Specialist is prohibited.

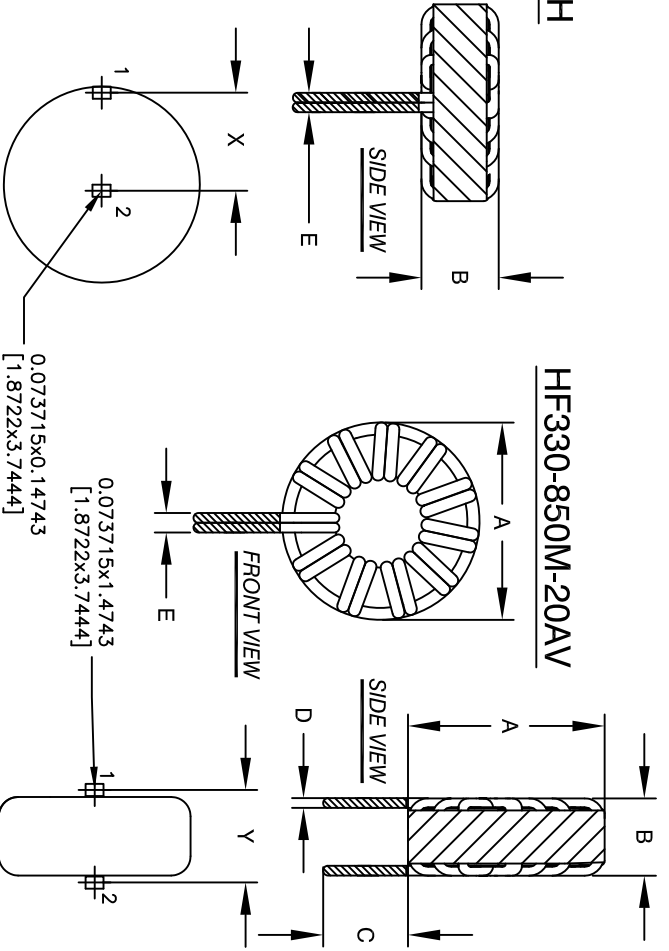
DIMENSIONAL TOLERANCES INCHES [MM]					
A	B	C	D	E	X
MAX	MAX	MIN	REF	REF	REF
1.80 [45.72]	1.00 [25.40]	0.50 [12.70]	0.0641 [1.628]	0.1282 [3.256]	0.84 [21.372]
					0.96 [24.37]

REVISION HISTORY		SIGN & DATE	
REV	ECN	BY	DATE
A	PRODUCTION RELEASE	JL	04/20/17
B1	DIMENSION CORRECTIONS	JL	04/24/17

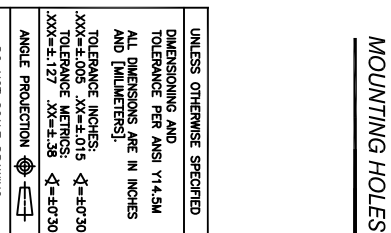
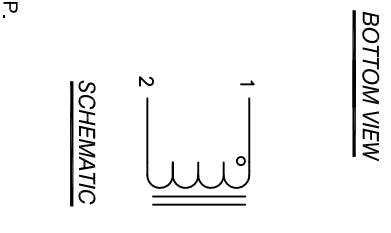
### HF330-850M-20AH



### HF330-850M-20AV



- BUILT TO ROHS COMPLIANCE.
- IF APPLICABLE, LABEL PART NUMBER AND REVISION
- POSITION LEADS AS REQUIRED  
REMOVE WIRE INSULATION AND TIN  
WIND COILS EVENLY SPACED  
CONSTRUCTION:
- WEIGHT: ~145 GRAMS
- HI-POT WINDING-TO-CORE 1250 V AC, 10 SEC  
DCR = 10mΩ MAX  
SRF > 10MHZ  
MAX TEMP. RISE @ IDC 20 AMP, LESS THAN 50°C WITH NO AIRFLOW  
DC BIASED = 20 AMPS, INDUCTANCE = 63.7 UH  
DC BIASED = 10 AMPS, INDUCTANCE = 77.7 UH  
INDUCTANCE @ 0 AMP = 85uH±15% (LESS THAN 10% RIPPLE)  
TEST FREQUENCY: 1.0 KHZ : TEST VOLTAGE: 250mV  
RATED MAX. CURRENT = 20 AMPS RMS : FREQUENCY: 1KHZ  
OPERATING TEMPERATURE RANGE: -40° TO 180°C  
SPECIFICATIONS @ 25°C
- WIRE: UL RATED CLASS 200°C  
CORE: HIGH TEMP POWDERED CORE
- RATING UL-CLASS H (180°C) REQUIRED  
MATERIAL: UL RECOGNIZED FLAMMABILITY



CODE IDENT	MFG. P/N	DESCRIPTION	ITEM NO.
PARTS LIST			
AUTOCAD	X		
SOLIDWORKS			
SIGN	DATE	TITLE:	
JL	04/20/17	COILS COM, INC	
AM	04/20/17	353 W Grove Ave	
KLC	04/20/17	Orange, CA 92865	
KLC	04/20/17	Toroidal Power Inductor	
APPR	04/20/17	85 uH, 20 Amp	
KLC	04/20/17	HF330-850M-20A	
SCALE	NOT TO SCALE	SIZE [Dwg. No.]	REV
		B	B1