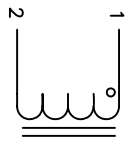


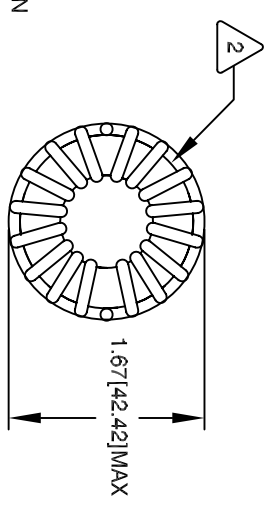
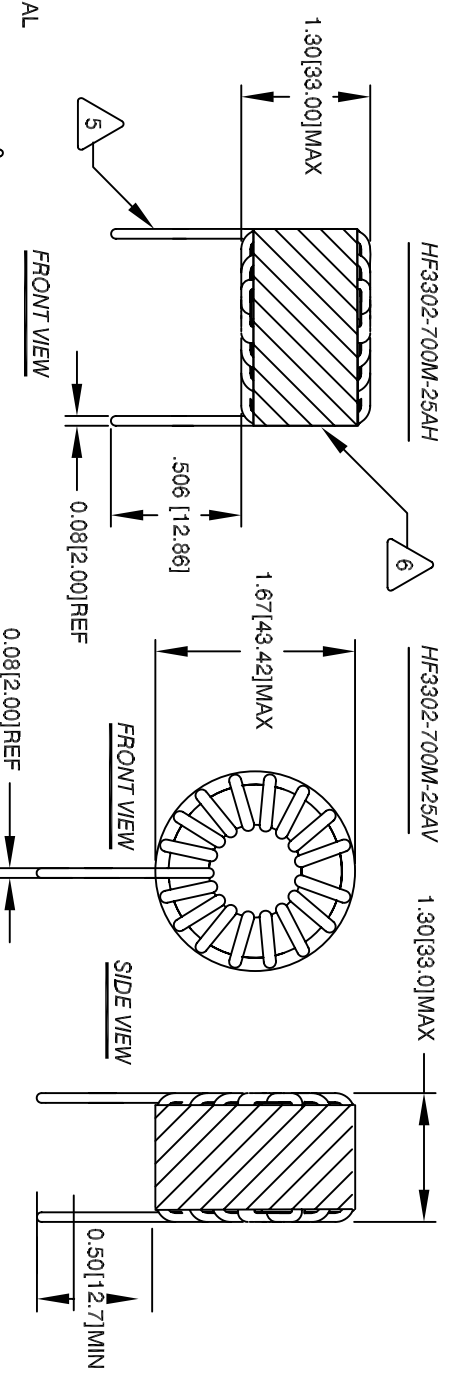
The information contained in this drawing is the sole property of CWS Coil Winding Specialist. Any reproduction in part or whole without written permission of CWS Coil Winding Specialist is prohibited.

REVISION HISTORY

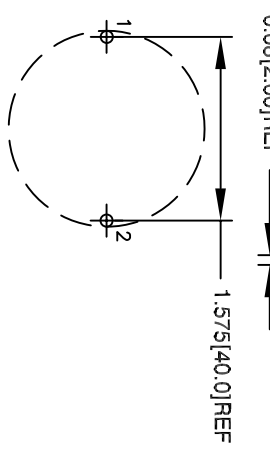
REV	ECN	DESCRIPTION	BY	DATE	CHK	DATE
A		PRODUCTION RELEASE	KLC	2/13/09	RL	2/13/09



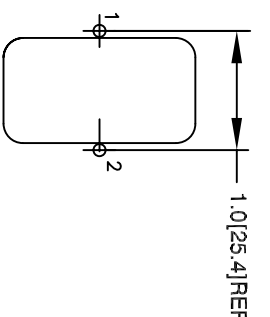
SCHEMATIC



BOTTOM VIEW



MOUNTING HOLES PATTERN (HORIZONTAL)



MOUNTING HOLES PATTERN (VERTICAL)

7 BUILD TO ROHS COMPLIANCE - LEAD FREE

6 TO THE CORE
MUST REST FLAT ON PCB. LEADS MUST BE TANGENT FLUSH WITH THE COIL EDGE. AS SHOWN (I.E. COIL REMOVE INSULATION AND TIN LEADS 0.50 INCH MIN)

5 WIND COILS EVENLY SPACED AROUND THE CORE CONSTRUCTION:

4 HI-POT TEST FOR WINDING TO CORE ISOLATION = 500VDC MIN
CURRENT RATING : 8 AMPS, 25 °C TEMP. RISE, NO AIR FLOW
DCR = 40.0 MILLI-OHMS MAX.
DC BIASED = 25.0 AMPS, INDUCTANCE = 45 UH
DC BIASED = 20.0 AMPS, INDUCTANCE = 50 UH
INDUCTANCE = 65 UH ±15% @ LOW DC BIAS, 1 KHz, 250mV SPECIFICATIONS:

3 WIRE: UL RECOGNIZED 200°C RATED MAGNET WIRE
CWS BYTE-MARK OR OTHER APPROVED PART
CORE: COATED HIGH FLUX TOROIDAL CORE

1 RATING CLASS B (130°C MIN.) REQUIRED MATERIAL: UL RECOGNIZED 94V-0 FOR FLAMMABILITY

NOTES: TOROIDAL POWER CHOKE. ALL DIMENSIONS IN INCHES

CODE	IDENT	MFG. P/N	DESCRIPTION	ITEM NO.

AUTOCAD		SOLIDWORKS	
SIGN	DATE	SIGN	DATE
	2/13/09		2/13/09

UNLESS OTHERWISE SPECIFIED
DIMENSIONING AND TOLERANCE PER ANSI Y14.5M
ALL DIMENSIONS ARE IN INCHES AND [MILLIMETERS].
TOLERANCE INCHES: ϕ = ±0.30
XXX = ±0.005 XX = ±0.015
TOLERANCE METRICS: ϕ = ±0.30
XXX = ±0.127 XX = ±0.38
ANGLE PROJECTION ϕ

DO NOT SCALE DRAWING

DRWN	CHKD	ENGR	APPR	SIZE	DWG. NO.	SCALE	SHEET	OF	REV
				B	HF3302-700M-25A	2=1	1	1	A

COWLS COM, INC
353 WEST GROVE
ORANGE, CA 92665

CWS Coil Winding Specialist

TITLE: Toroidal Power Inductor
65 UH, 25 Amp

PARTS LIST

EP FORM0005 REV 3 10/01 CAD-FILE: SHEET 1 OF 1