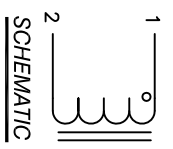


The information contained in this drawing is the sole property of CMS Coil Winding Specialist. Any reproduction in part or whole without written permission of CMS Coil Winding Specialist is prohibited.



| DIMENSIONAL TOLERANCES INCHES (MM) | | | | | |
|------------------------------------|-----------------|-----------------|----------------|--|-----------------|
| A | B | C | D | | P1 |
| MAX | MAX | NOM | REF | | |
| 1.65 [41.91] | 1.20 [30.48] | 1.00 [25.40] | 0.08 [2.05] | | 1.10 [28.00] |

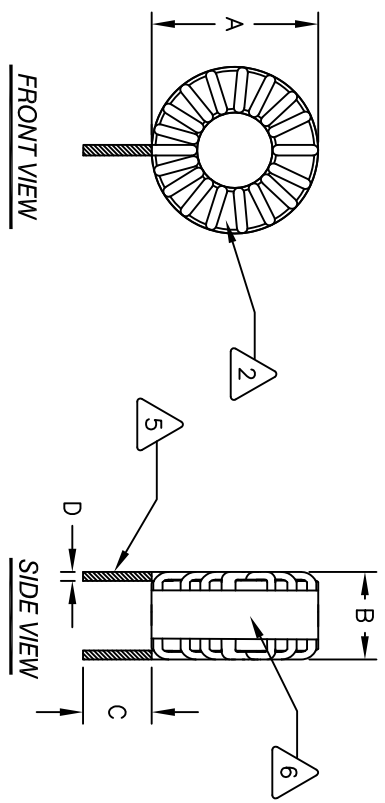
| REVISION HISTORY | | | SIGN & DATE | | | |
|------------------|-----|--------------------|-------------|------------|-----|------------|
| REV | ECN | DESCRIPTION | BY | DATE | CHK | DATE |
| A | | PRODUCTION RELEASE | JL | 3/24/17 | JM | 3/24/17 |
| A1 | | UPDATED SPEC. | TN | 06/12/2020 | JL | 06/12/2020 |

- 7 BUILT TO ROHS COMPLIANCE AND LEAD FREE
- REVISION AND DATE CODE
- 6 PLACE LABEL ON GLASS TAPE SHOWING PART NUMBER, FLUSH WITH THE COIL EDGE
- 5 REMOVE INSULATION AND TIN LEADS APPROX. 1 INCH
- WIND COILS EVENLY SPACED
- 4 CONSTRUCTION:

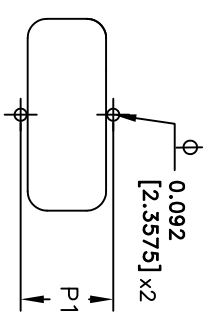
- HI-POT TEST COIL TO CORE = 500VDC.
- CURRENT RATING = 25 AMPS, 44°C TEMP. RISE WITH SOME AIRFLOW
- INTERWINDING CAPACITANCE = 13pF TYPICAL @ SRF
- |Z| = 12.5 KΩ TYP @ SRF
- SRF = 6 MHz TYP
- DCR = 10 mΩ MAX
- INDUCTOR DC BIAS: SEE TABLE ON THE RIGHT
- L = 75μH ±15% @ 1kHz, 250mV
- 3 SPECIFICATIONS @ 25°C:

- OUTER WRAP: 3M #79 GLASS CLOTH TAPE OR EQUIVALENT
- WIRE: UL RECOGNIZED 200°C RATTING MAGNET WIRE
- SUPPLIER: CMS BYTEMARK (www.cmsbytemark.com)
- 2 CORE: COATED TOROIDAL POWDERED

- 1 RATING CLASS N (200°C) REQUIRED
 - MATERIAL: UL RECOGNIZED
- DIM. WITHOUT ANY TOLERANCE. THIS DIM. CAN VARY A LITTLE FROM PART TO PART. "TYP" IN TOL. DIM TABLE (IF APPLICABLE) REFERS TO A NON-CRITICAL TYPICAL (AVERAGE)
- NOTES: UNLESS OTHERWISE SPECIFIED, READ FROM BOTTOM UP
- CAGE CODE: 5DME2



| DC BIAS TABLE | | |
|---------------|----------------|--|
| DC-BIAS AMP | L @ 1kHz (REF) | |
| 0A | 82 uH | |
| 10A | 79 uH | |
| 20A | 70 uH | |
| 25A | 65 uH | |



| CODE IDENT | MFG. P/N | DESCRIPTION | ITEM NO. |
|-------------------|------------------|--------------------------------------|----------|
| PARTS LIST | | | |
| AUTOCAD | X | | |
| SOLIDWORKS | | | |
| SIGN | DATE | | |
| DRWN JL | 3/24/17 | | |
| CHKD JM | 3/24/17 | | |
| ENGR JM | 3/24/17 | | |
| APPR JM | 3/24/17 | | |
| TITLE: | | Toroidal Power Inductor | |
| SALES@COILWS.COM | | CWS Coil Winding Specialist. | |
| www.coilws.com | | 353 W GROVE AVE ORANGE, CA. 92865 | |
| SIZE | DWG. NO. | REV | |
| A | HF3302-750M-25AV | A1 | |
| SCALE | N/A | SHEET | 1 OF 1 |