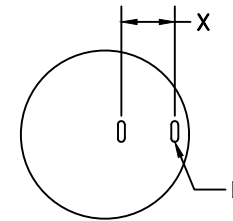
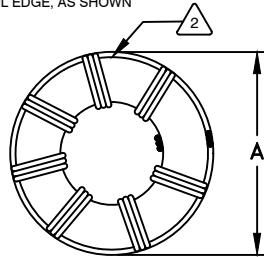
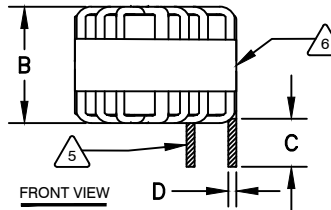


The information contained in this drawing is the sole property of CWS Coil Winding Specialist. Any reproduction in part or whole without written permission of CWS Coil Winding Specialist is prohibited.

DIMENSIONAL TOLERANCES INCHES [MM]					
A	B	C	D	E	X
MAX	MAX	MIN	REF	REF	REF
1.81	0.83	0.80	0.07x0.14	0.038x0.17	0.63
[46.00]	[21.00]	[20.32]	[1.83x3.66]	[2.10x4.20]	[16.00]

REVISION HISTORY						
REV	ECN	DESCRIPTION	SIGN & DATE			
			BY	DATE	CHK	DATE
A	-	PRODUCTION RELEASE	JL	11/18/2017	JLAU	11/18/2017
A1	-	UPDATED SPECS.	JZ	08/19/2021	JL	08/19/2021



DC BIAS TABLE

DC BIAS (AMP)	L @ 1.0 KHz
0	20.0uH
5	19.3uH
10	17.9uH
15	16.4uH
20	14.8uH
25	13.1uH
30	11.6uH
35	10.3uH
40	9.0uH

7 BUILD TO RoHS COMPLIANCE AND LEAD FREE.

6 USING A PERMANENT MARKING METHOD MARK PART NUMBER AND REVISION, IF APPLICABLE WRAP INDUCTOR WITH 3M # 79 OR EQUAL

5 (I.E. COIL MUST REST FLAT ON PCB), LEADS MUST BE TANGENT TO THE CORE REMOVE INSULATION AND TIN LEADS 0.80 INCH, FLUSH WITH THE COIL EDGE, AS SHOWN

4 WIND COILS EVENLY SPACED AROUND THE CORE CONSTRUCTION:

THESE SPECIFICATIONS ARE BASED ON LOW RIPPLE CURRENT WEIGHT: 100 GRAMS TYPICAL INTERWINDING CAPACITANCE = 15 pF TYP @ SRF SRF = 10 MHz TYPICAL |Z| = 1.85 KILO-OHMS TYP @ SRF RECOMMENDED AMBIENT OPERATING TEMP: -40°C TO 200°C HI-POT TEST FOR WINDING TO CORE ISOLATION = 1250 VDC 10 SEC CURRENT RATING : 40 AMPS, 60°C TEMP. RISE WITH SOME AIR FLOW DCR = 3 MILLI-OHMS MAX. INDUCTOR DC BIAS: SEE TABLE ON THE RIGHT

3 INDUCTANCE = 20 uH ± 15% @ 0 AMP DC BIAS, 1.0 KHz, 300mV SPECIFICATIONS @ 25°C :

2 WIRE: UL RECOGNIZED 200°C RATED MAGNET WIRE CORE: POWDERED TOROIDAL CORE, CWS BYTEMARK OR OTHER APPROVED PART

1 MATERIAL: UL RECOGNIZED 94V-0 FOR FLAMMABILITY, RATING CLASS H (180°C MIN.) REQUIRED

ANY TOLERANCE. THIS DIM. CAN VARY A LITTLE FROM PART TO PART.

TYP IN DIM. TOL. TABLE REFERS TO A NON-CRITICAL TYPICAL (AVERAGE) DIM. WITHOUT

NOTES: UNLESS OTHERWISE STATED, READ NOTES FROM BOTTOM UP.

CAGE CODE: 5DME2

CODE IDENT	MFG. P/N	DESCRIPTION	ITEM NO.
PARTS LIST			
AUTOCAD	X		
SOLIDWORKS			
DRWN	JL	11/18/2017	
DESD	JLAU	11/18/2017	
ENGR.	JLAU	11/18/2017	
APPR.	JLAU	11/18/2017	
UNLESS OTHERWISE SPECIFIED		CWS Coil Winding Specialist. 353 W Grove Ave Orange, CA. 92865	
DIMENSIONING AND TOLERANCE PER ANSI Y14.5M		TITLE: TOROIDAL POWER INDUCTOR 20 uH, 40 Amps, Horizontal	
ALL DIMENSIONS ARE IN INCHES AND (UNLESS NOTED)		SIZE B	
TOLERANCE INCHES: .000±.005 .001±.015 ϕ±.0730		DWG. NO. HF358-200M-40AH	
TOLERANCE METRIC: .000±.127 .001±.38 ϕ±.0730		REV A1	
ANGLE PROJECTION		SCALE 2=1	
DO NOT SCALE DRAWING		SHEET 1 OF 1	