

The information contained in this drawing is the sole property of CWS Coil Winding Specialist. Any reproduction in part or whole without written permission of CWS Coil Winding Specialist is prohibited.

DIMENSIONAL TOLERANCES INCHES (MM)				
A	B	C	D	P1
MAX	MAX	MAX	REF	
1.75	1.09	1.25	0.09	1.00
[44.45]	[27.686]	[31.75]	[2.30]	[25.40]

REVISION HISTORY		SIGN & DATE				
REV	ECN	DESCRIPTION	BY	DATE	CHK	DATE
A		PRODUCTION RELEASE	JL	3/24/17	JM	3/24/17

7 BUILT TO ROHS COMPLIANCE AND LEAD FREE

WHERE SHOWN

MARK PART NUMBER AND REVISION IN (BLACK) APPROX
 WRAP INDUCTOR WITH GLASS TAPE, (PER NOTE 2)

6 MUST REST FLAT ON PCB). LEADS MUST BE TANGENT TO THE CORE
 FLUSH WITH THE COIL EDGE, AS SHOWN (I.E. COIL
 REMOVE INSULATION AND TIN LEADS APPROX. 1 INCH

5 WIND COILS EVENLY SPACED

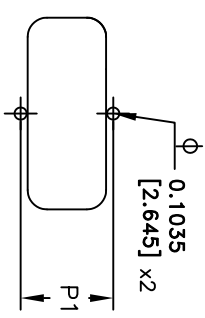
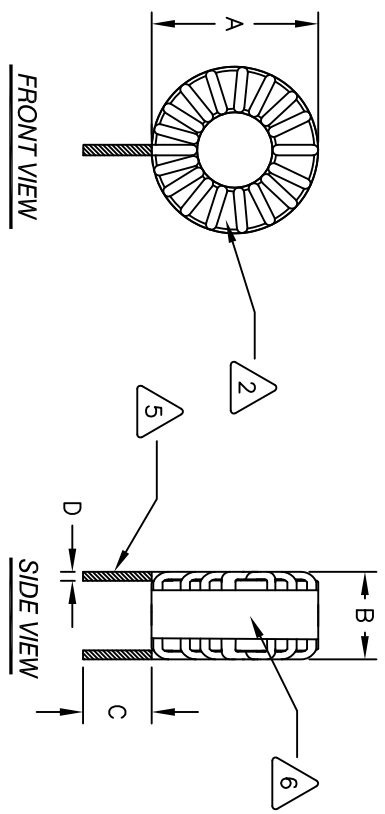
4 CONSTRUCTION:
 HI-POT TEST COIL TO CORE = 500VDC.
 CURRENT RATING= 25AMPS, 44°C TEMP. RISE. NO AIR FLOW
 INTERWINDING CAPACITANCE 21pF TYPICAL @ SRF
 DCR= 10 mΩ MAX
 SRF ~ 3800kHz Typical
 INDUCTANCE AT 25 AMP ~ 66uH
 L= 82uH ±15% @1kHz, 250mV

3 SPECIFICATIONS @ 25°C:

OUTER WRAP: 3M #79 GLASS CLOTH TAPE OR EQUAL
 WIRE: UL RECOGNIZED 200°C RATING MAGNET WIRE
 SUPPLIER: CWS BYTEMARK (www.cwsbytemark.com)
 CORE: MPP TORROID, COATED

2 RATING CLASS N (200°C) REQUIRED
 1. MATERIAL: UL RECOGNIZED 94V-0 FLAMMABILITY

NOTES: READ FROM BOTTOM UP



MOUNTING HOLES PATTERN

CODE IDENT	MFG. P/N	DESCRIPTION	ITEM NO.
		PARTS LIST	
AUTOCAD			
SOLIDWORKS			
SIGN	DATE		
JL	3/24/17		
CHKD	3/24/17		
ENGR	3/24/17		
APPR	3/24/17		
TITLE:		Toroidal Power Inductor	
SIZE (Dwg. No.)		82.0 uH, 25 Amp	
SCALE		1=1	
CWS Coil Winding Specialist		REV A	
353 W GROVE AVE		SHEET 1 OF 1	
WWW.COILWS.COM		ORANGE, CA. 92865	

UNLESS OTHERWISE SPECIFIED
 DIMENSIONING AND TOLERANCE PER ANSI Y14.5M AND (MILLIMETERS).
 TOLERANCE INCHES: .XX=±.015 .X=±.030
 TOLERANCE METRICS: .XX=±.127 .X=±.254
 ANGLE PROJECTION
 DO NOT SCALE DRAWING