

The information contained in this drawing is the sole property of CNS Coil Winding Specialist. Any reproduction in part or whole without written permission of CNS Coil Winding Specialist is prohibited.



DIMENSIONAL TOLERANCES				
INCHES (MM)				
A	B	C	D	Y
MAX	MAX	MAX	REF	REF
1.83	.87	.75	.06	.78
[46.5]	[22.2]	[19.05]	[1.52]	[20.0]

REVISION HISTORY		SIGN & DATE				
REV	ECN	DESCRIPTION	BY	DATE	CHK	DATE
A	-	INITIAL RELEASE	KLC	05/06/2008	RL	05/06/2008
B	-	UPDATED SPEC.	TI	06/04/2020	JL	06/04/2020

7 BUILD TO ROHS COMPLIANCE AND LEAD FREE.

USING A PERMANENT MARKING METHOD
MARK PART NUMBER AND REVISION, IF APPLICABLE.

6 WRAP INDUCTOR WITH 3M # 79 OR EQUAL

5 (I.E. COIL MUST REST FLAT ON PCB). LEADS MUST BE TANGENT TO THE CORE
REMOVE INSULATION AND TIN LEADS 0.50 INCH, FLUSH WITH THE COIL EDGE, AS SHOWN

4 WIND COILS EVENLY SPACED AROUND THE CORE
CONSTRUCTION:

WEIGHT: 130 GRAMS TYPICAL

INTERWINDING CAPACITANCE = 50.6pF TYP @ SRF

SRF = 879.5kHz TYPICAL

|Z| = 20.3 KIL-OHMS TYP @ SRF

RECOMMENDED AMBIENT OPERATING TEMP: -40°C TO 125°C

HI-POT TEST FOR WINDING TO CORE ISOLATION = 1250 VDC 10 SEC

CURRENT RATING : 8 AMPS, 40°C TEMP. RISE WITH SOME AIR FLOW

DCR = 45 MILLI-OHMS MAX.

INDUCTOR DC BIAS: SEE TABLE ON THE RIGHT

INDUCTANCE = 600 uH ± 15% @ 0 AMP DC BIAS, 1.0 KHz, 300mV

3 SPECIFICATIONS @ 25° C :

WIRE: UL RECOGNIZED 200°C RATED MAGNET WIRE

CORE: HIGH POWDERED TOROIDAL CORE, CWS BYTEMARK OR OTHER APPROVED PART

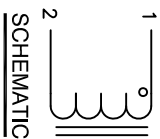
2 MATERIAL: UL RECOGNIZED 94V-0 FOR FLAMMABILITY, RATING CLASS N (200°C MIN.) REQUIRED

1 ANY TOLERANCE. THIS DIM. CAN VARY A LITTLE FROM PART TO PART.

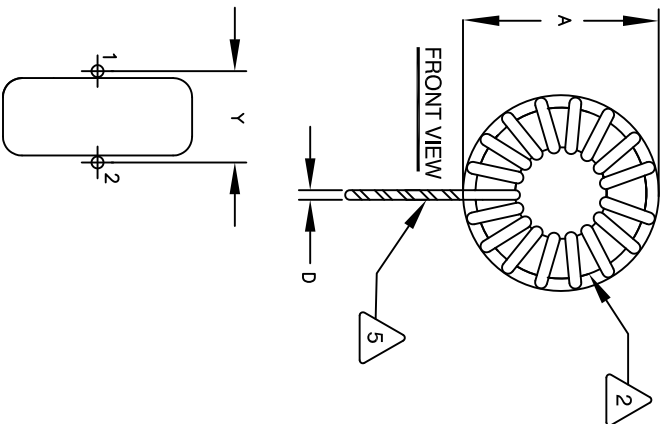
"TYP" IN DIM. TABL. REFERS TO A NON-CRITICAL TYPICAL (AVERAGE) DIM. WITHOUT

NOTES: UNLESS OTHERWISE STATED, READ NOTES FROM BOTTOM UP.

CAGE CODE: 5DME2



SCHEMATIC



SIDE VIEW

DC BIAS TABLE	
DC BIAS (AMP)	L @ 1.0 KHz
0	660uH
2	630uH
4	590uH
6	530uH
8	450uH

MOUNTING HOLES PATTERN

UNLESS OTHERWISE SPECIFIED	
DIMENSIONING AND TOLERANCE PER ANSI Y14.5M AND [DIMETERS].	
TOLERANCE INCHES: XXX=±.127 XX=±.127 X=±.38	±.030 ±.030 ±.030
ANGLE PROJECTION	
DO NOT SCALE DRAWING	

CODE IDENT	MFG. P/N	DESCRIPTION	ITEM NO.
AUTOCAD	X		
SOLIDWORKS			
SIGN	DATE	PARTS LIST	
DRWN	05/06/2008	TITLE: TOROIDAL POWER INDUCTOR	
CHGD	05/06/2008	600uH, 8Amps, Vertical	
ENGR.	05/06/2008	SITE DWG. NO. HF400-601M-8.0AV	
APPR.	05/06/2008	SCALE: 2=1	REV B
			SHEET 1 OF 1

CWS Coil Winding Specialist.
353 WEST GROVE
ORANGE, CA 92865