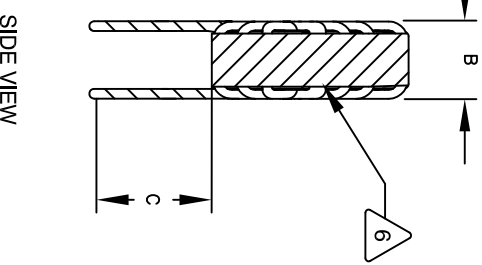
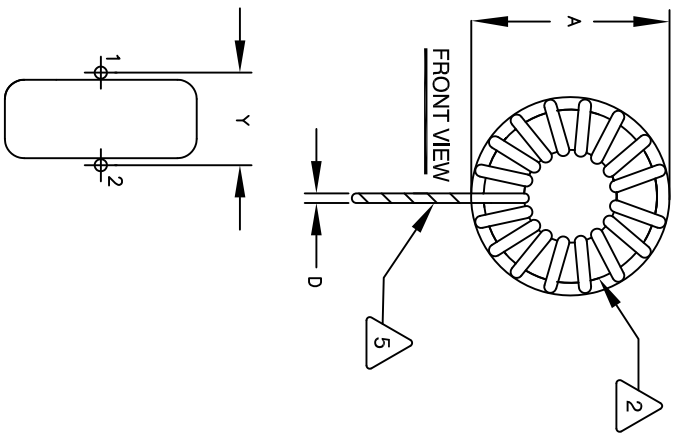
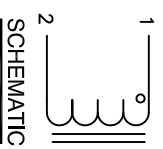


The information contained in this drawing is the sole property of CWS Coil Winding Specialist. Any reproduction in part or whole without written permission of CWS Coil Winding Specialist is prohibited.

DIMENSIONAL TOLERANCES					
INCHES (MM)					
A	B	C	D	Y	
MAX	MAX	MIN	REF	REF	
2.50 [63.50]	1.33 [33.78]	0.50 [12.70]	0.08 [2.08]	1.07 [27.18]	

REVISION HISTORY				SIGN & DATE		
REV	ECN	DESCRIPTION	BY	DATE	CHK	DATE
B	—	UPDATED ELEC. & MECH. SPEC.	TN	02/22/2018	JL	02/22/2018
C	—	UPDATED SPEC.	TI	06/10/2020	JM	06/10/2020



DC BIAS TABLE	DC BIAS (AMP)	L @ 1.0 KHZ
0	1002uH	
5	901uH	
10	655uH	
13	516uH	
15	435uH	
20	282uH	
23	215uH	
26	168uH	

7 BUILT TO ROHS COMPLIANCE AND LEAD FREE.

6 USING A PERMANENT MARKING METHOD MARK PART NUMBER AND REVISION, IF APPLICABLE. WRAP INDUCTOR WITH 3M # 79 OR EQUAL

5 (I.E. COIL MUST REST FLAT ON PCB), LEADS MUST BE TANGENT TO THE CORE REMOVE INSULATION AND TIN LEADS 0.50 INCH, FLUSH WITH THE COIL EDGE, AS SHOWN WIND COILS EVENLY SPACED AROUND THE CORE CONSTRUCTION:

4 WEIGHT: 292 GRAMS TYPICAL INTERWINDING CAPACITANCE = 50PF TYP @ SRF SRF = 730KHZ TYPICAL

|Z| = 27 KIL-OHMS TYP @ SRF RECOMMENDED AMBIENT OPERATING TEMP: -40°C TO 180°C HI-POT TEST FOR WINDING TO CORE ISOLATION = 1250 VDC 10 SEC CURRENT RATING : 26 AMPS, 50°C TEMP. RISE WITH SOME AIR FLOW DCR = 28 MILLIOHMS MAX.

INDUCTOR DC BIAS: SEE TABLE ON THE RIGHT INDUCTANCE = 1mH±15% @ 0 AMP DC BIAS, 1.0 KHZ, 300mV SPECIFICATIONS @ 25° C :

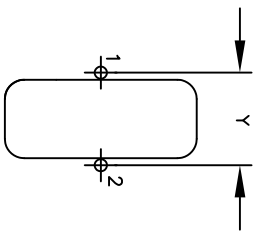
3 WIRE: UL RECOGNIZED 200°C RATED MAGNET WIRE CORE: HIGH POWDERED TOROIDAL CORE, CWS BYTEMARK OR OTHER APPROVED PART

2 MATERIAL: UL RECOGNIZED 94V-0 FOR FLAMMABILITY, RATING CLASS N (200°C MIN.) REQUIRED ANY TOLERANCE. THIS DIM. CAN VARY A LITTLE FROM PART TO PART.

1 "TYP" IN DIM. TABL. REFERS TO A NON-CRITICAL TYPICAL (AVERAGE) DIM. WITHOUT NOTES: UNLESS OTHERWISE STATED, READ NOTES FROM BOTTOM UP.

CAGE CODE: 5DME2

MOUNTING HOLES PATTERN



UNLESS OTHERWISE SPECIFIED	
DIMENSIONING AND DIMENSIONS PER ANSI Y14.5M AND [MILLIMETERS].	
TOLERANCE INCHES:	∅ = +0.30'
XXX=±.005 XX=±.015	∅ = -0.30'
TOLERANCE METRICS:	
XXX=±.127 XX=±.38	
ANGLE PROJECTION	
DO NOT SCALE DRAWING	

CODE IDENT	MFG. P/N	DESCRIPTION	ITEM NO.
		PARTS LIST	
AUTOCAD SOLIDWORKS			
SIGN	DATE		
DRWNN TN	10/04/2017	COILWS.COM, INC 353 WEST GROVE ORANGE, CA 92665 CWS Coil Winding Specialist.	
CHKD JL	10/04/2017		
ENGR JM	10/04/2017		
APPR JL	10/04/2017		
TITLE:		TOROIDAL POWER INDUCTOR	
SIZE (ING. NO.)		1mH, 26 Amps, Vertical	
SCALE		HF467-102M-26AV	REV C
		2=1	SHEET 1 OF 1