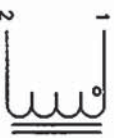


This information contained in this drawing is the sole property of CNS Coil Winding Specialist. Any reproduction in part or whole without written permission of CNS Coil Winding Specialist is prohibited.



SCHEMATIC

7 BUILD TO ROHS COMPLIANCE

6 USING A PERMANENT MARKING METHOD MARK PART NUMBER AND REVISION, IF APPLICABLE WRAP INDUCTOR WITH 3M TAPE

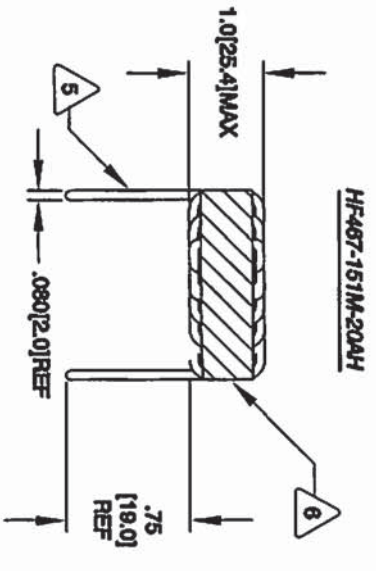
5 TO THE CORE MUST REST FLAT ON PCB), LEADS MUST BE TANGENT FLUSH WITH THE COIL EDGE, AS SHOWN (I.E. COIL REMOVE INSULATION AND TIN LEADS 0.75 INCH

4 WIND COILS EVENLY SPACED AROUND THE CORE CONSTRUCTION:
 HI-POT TEST FOR WINDING TO CORE ISOLATION = 500VDC MIN
 CURRENT RATING : 20 AMPS, 40 °C TEMP. RISE, NO AIR FLOW
 DCR = 20.0 MILLI-OHMS MAX.
 DC BIASED = 20 AMPS, INDUCTANCE = 152 UH
 DC BIASED = 10 AMPS, INDUCTANCE = 141 UH
 INDUCTANCE = 150 UH ±15% @ LOW DC BIAS, 1 KHz, 250mV SPECIFICATIONS:

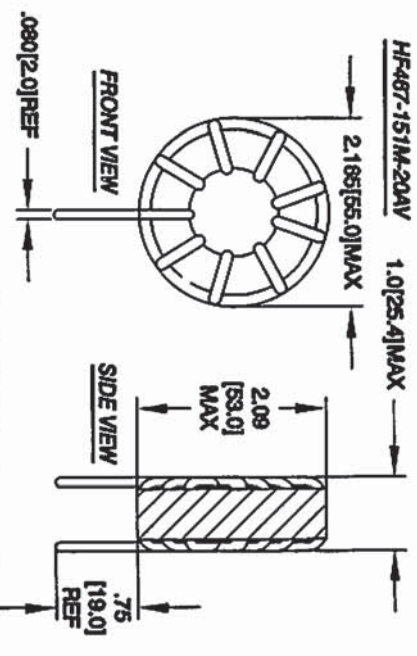
3 WIRE: UL RECOGNIZED 200°C RATED MAGNET WIRE
 CWS BYTE-MARK OR OTHER APPROVED PART
 CORE: COATED HIGH FLUX TOROIDAL CORE
 2
 RATING CLASS B (130°C MIN.) REQUIRED
 MATERIAL: UL RECOGNIZED 94V-0 FOR FLAMMABILITY

NOTES: TOROIDAL POWER INDUCTOR. ALL DIMENSIONS IN INCHES[MM]

EP FORM0005 REV 3 10/01

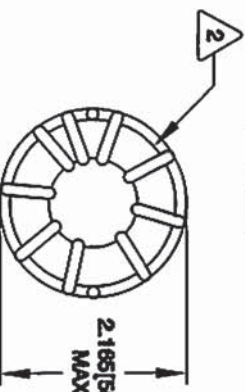


FRONT VIEW

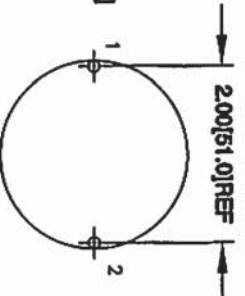


FRONT VIEW

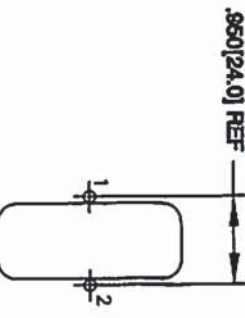
SIDE VIEW



BOTTOM VIEW



MOUNTING HOLES PATTERN



MOUNTING HOLES PATTERN

REVISION HISTORY			
REV	ECON	DESCRIPTION	DATE
A		PRODUCTION RELEASE	07/23/09

CODE	MFG. P/N	DESCRIPTION	ITEM NO.
AUTOCAD	X		
SOLIDWORKS			

DATE	BY	DATE	CHK	DATE
07/23/09	KJC	07/23/09	AM	07/23/09
07/23/09	KJC	07/23/09	APP	

CNS	CWS COIL WINDING SPECIALIST
353 W GROVE AVE	
ORANGE, CA 92665	

TITLE	150 UH, 20 Amp Toroidal Power Inductor
SIZE	B
SCALE	NOT TO SCALE
SHEET	1 OF 1

CAD-FILE: