

The information contained in this drawing is the sole property of CMS Coil Winding Specialist. Any reproduction in part or whole without written permission of CMS Coil Winding Specialist is prohibited.

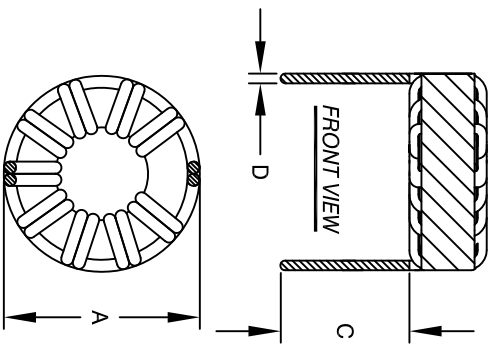


- 7 BUILT TO ROHS COMPLIANCE.
 - 6 IF APPLICABLE, LABEL PART NUMBER AND REVISION POSITION LEADS AS REQUIRED
 - 5 REMOVE WIRE INSULATION AND TIN WIND COILS EVENLY SPACED CONSTRUCTION:
 - 4 WEIGHT: ~230 GRAMS
 - 3 HI-POT WINDING-TO-CORE 1250 V AC, 10 SEC INTERWINDING CAPACITANCE 15.5pF TYPICAL @ SRF DCR = 4.0mΩ MAX SRF ~ 8600kHz TYPICAL MAX TEMP. RISE @ IDC 60 AMP, LESS THAN 50°C WITH NO AIRFLOW DC BIASED = 60 AMPS, INDUCTANCE = 13 UH DC BIASED = 20 AMPS, INDUCTANCE = 17 UH INDUCTANCE @ 0 AMP = 20uH±15% (LESS THAN 10% RIPPLE) TEST FREQUENCY: 1.0 KHZ; TEST VOLTAGE: 250mV RATED MAX. CURRENT = 60 AMPS RMS; FREQUENCY: 1KHZ OPERATING TEMPERATURE RANGE: -40° TO 180°C SPECIFICATIONS @ 25°C
 - 2 WIRE: UL RATED CLASS 200°C CORE: HIGH TEMP POWDERED CORE
 - 1 RATING UL-CLASS H (180°C) REQUIRED MATERIAL: UL RECOGNIZED FLAMMABILITY
- NOTES: UNLESS OTHERWISE SPECIFIED, READ NOTES FROM BOTTOM TO UP.

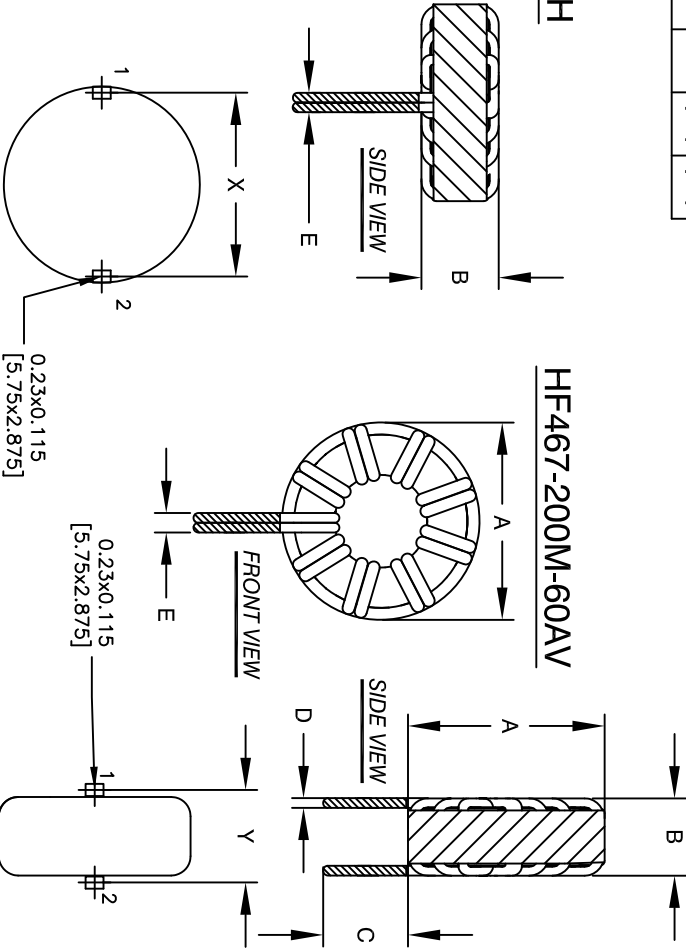
DIMENSIONAL TOLERANCES INCHES [MM]									
A	B	C	D	E	X	Y			
MAX	MAX	MIN	REF	REF	REF	REF			
2.20 [56.0]	1.026 [26.0]	.75 [19.05]	0.10 [2.54]	0.20 [5.08]	2.12 [54.0]	.944 [24.0]			

REVISION HISTORY			
REV	ECN	DESCRIPTION	DATE
A		PRODUCTION RELEASE	4/09/09

HF467-200M-60AH



HF467-200M-60AV



BOTTOM VIEW

MOUNTING HOLES PATTERN

MOUNTING HOLES PATTERN

SCHEMATIC

CODE IDENT	MFG. P/N	DESCRIPTION	ITEM NO.

PARTS LIST		SIGN & DATE	
AUTOCAD	X	BY	DATE
SOLIDWORKS		GN	4/09/09
DRWN	07/23/09	CHK	07/23/09
ENGR	07/23/09	AM	
APPR	7/23/09		

TITLE:		SIZE [Dwg. No.]	
Toroidal Power Inductor		B	
20 uH, 60 Amp		HF467-200M-60A	REV A

COWS COIL WINDING SPECIALIST	
353 W Grove Ave	Orange, CA 92865