

The information contained in this drawing is the sole property of CWS Coil Winding Specialist. Any reproduction in part or whole without written permission of CWS Coil Winding Specialist is prohibited.

DIMENSIONAL TOLERANCES INCHES [MM]					
A	B	C	D	E	P1
MAX	MAX	MIN	REF	REF	
[66.000]	[27.500]	[19.05]	[2.5889]	[5.178]	[24.25]

REVISION HISTORY			SIGN & DATE			
REV	ECN	DESCRIPTION	BY	DATE	CHK	DATE
A		PRODUCTION RELEASE	JL	05/19/17	JM	05/19/17

7 BUILT TO ROHS COMPLIANCE AND LEAD FREE

WHERE SHOWN

6 MARK PART NUMBER AND REVISION IN (BLACK) APPROX WRAP INDUCTOR WITH GLASS TAPE, (PER NOTE 2)

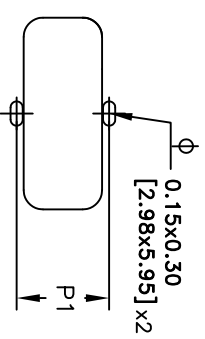
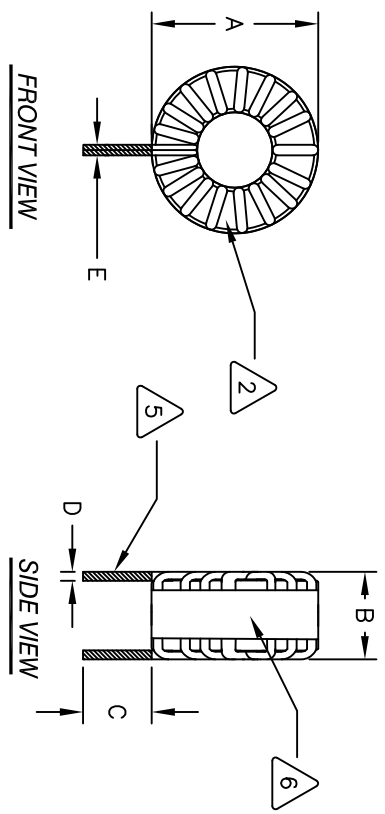
5 MUST REST FLAT ON PCB). LEADS MUST BE TANGENT TO THE CORE FLUSH WITH THE COIL EDGE, AS SHOWN (I.E. COIL REMOVE INSULATION AND TIN LEADS APPROX. 0.75 INCH

4 WIND COILS EVENLY SPACED CONSTRUCTION:

3 HI-POT TEST COIL TO CORE = 500VDC.
 CURRENT RATING= 65AMPS, 44°C TEMP. RISE. NO AIR FLOW
 INTERWINDING CAPACITANCE 12pF TYPICAL @ SRF
 $|Z| = 5.6\Omega @ SRF$
 DCR = $2m\Omega$ MAX
 SRF ~ 10MHz Typical
 INDUCTANCE AT 50 AMP ~ 18uH
 $L = 20uH \pm 15% @ 1kHz, 250mV$
 SPECIFICATIONS @ 25°C:

2 OUTER WRAP: 3M #79 GLASS CLOTH TAPE OR EQUAL
 WIRE: UL RECOGNIZED 200°C RATING MAGNET WIRE
 SUPPLIER: CWS BYTEMARK (www.cwsbytemark.com)
 CORE: MPP TOROID, COATED

1. RATING CLASS N (200°C) REQUIRED
 MATERIAL: UL RECOGNIZED 94V-0 FLAMMABILITY
 NOTES: READ FROM BOTTOM UP



MOUNTING HOLES PATTERN

CODE IDENT	MFG. P/N	DESCRIPTION	ITEM NO.
PARTS LIST			
AUTOCAD SOLIDWORKS	X		
UNLESS OTHERWISE SPECIFIED			
DRAWN JL	DATE 05/19/17	TITLE: Toroidal Power Inductor	REV A
CHECKED JM	DATE 05/19/17	SIZE: 1/8" DIA. NO.	
ENGR. JM	DATE 05/19/17	SCALE: B	
APPR. JM	DATE 05/19/17	NOT TO SCALE	