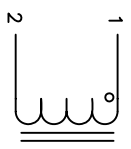


The information contained in this drawing is the sole property of CMS Coil Winding Specialist. Any reproduction in part or whole without written permission of CMS Coil Winding Specialist is prohibited.

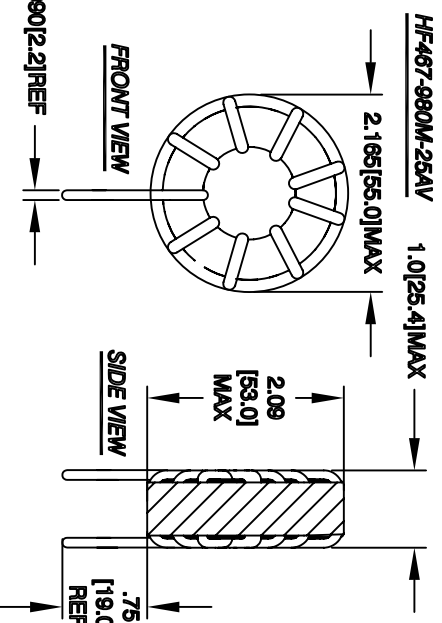
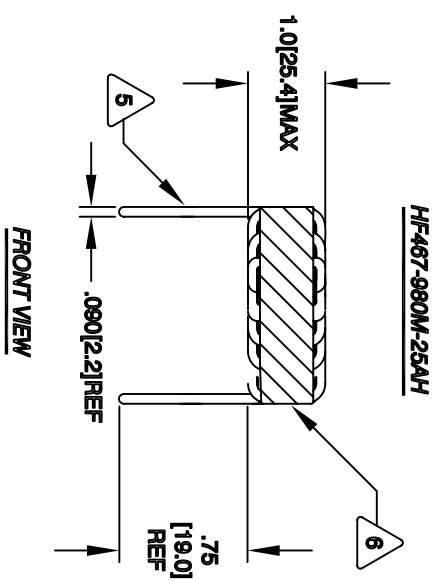
REVISION HISTORY

REV	ECN	DESCRIPTION	SIGN & DATE			
BY	DATE	CHK	DATE			
A		PRODUCTION RELEASE	GN	07/23/09	AM	07/23/09

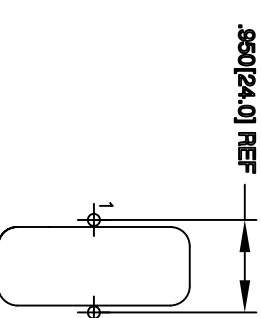
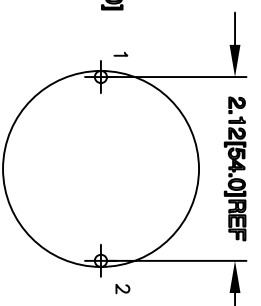
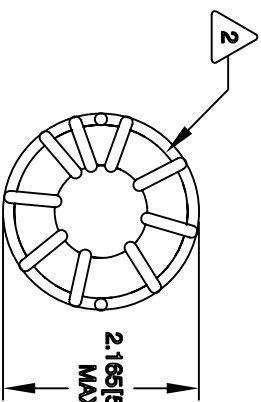


SCHEMATIC

- 7 BUILD TO ROHS COMPLIANCE
- 6 USING A PERMANENT MARKING METHOD MARK PART NUMBER AND REVISION, IF APPLICABLE WRAP INDUCTOR WITH 3M TAPE



- 5 TO THE CORE MUST REST FLAT ON PCB. LEADS MUST BE TANGENT FLUSH WITH THE COIL EDGE, AS SHOWN (I.E. COIL REMOVE INSULATION AND TIN LEADS 0.75 INCH



- 4 WIND COILS EVENLY SPACED AROUND THE CORE CONSTRUCTION:
- 3 HI-POT TEST FOR WINDING TO CORE ISOLATION = 500VDC MIN CURRENT RATING : 25 AMPS, 30 °C TEMP. RISE, NO AIR FLOW DCR = 12.0 MILLI-OHMS MAX.
DC BIASED = 20 AMPS, INDUCTANCE = 76 UH
DC BIASED= 15 AMPS, INDUCTANCE = 82 UH
INDUCTANCE = 98 UH ±15% @ LOW DC BIAS, 1 KHZ, 250mV SPECIFICATIONS:

- 2 WIRE: UL RECOGNIZED 200°C RATED MAGNET WIRE
CWS BYTEMARK OR OTHER APPROVED PART
CORE: COATED HIGH FLUX TOROIDAL CORE

- 1 RATING CLASS B (130°C MIN.) REQUIRED
MATERIAL: UL RECOGNIZED 94V-0 FOR FLAMMABILITY

NOTES: TOROIDAL POWER INDUCTOR. ALL DIMENSIONS IN INCHES[MM]

UNLESS OTHERWISE SPECIFIED	
DIMENSIONING AND TOLERANCE PER ANSI Y14.5M AND [UNITS/METERS]	DRMM
TOLERANCE INCHES: .XXX=±.005 .XX=±.015 .XX=±.127 .X=±.38	ENGR. AM
ANGLE PROJECTION	APPR. KLC
DO NOT SCALE DRAWING	

CODE IDENT	MFG. P/N	DESCRIPTION	ITEM NO.
PARTS LIST			
AUTOCAD SOLIDWORKS SIGN	X	CMS Coil Winding Specialist 353 W Grove Ave Orange, CA 92865	
DATE	DATE	TITLE:	
07/23/09	07/23/09	Toroidal Power Inductor	
07/23/09	07/23/09	98 UH, 25 Amp	
07/23/09	07/23/09	HF467-980M-25A	REV A
SCALE	NOT TO SCALE	SHEET	1 OF 1