

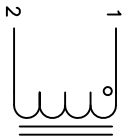
The information contained in this drawing is the sole property of CWS Coil Winding Specialist. Any reproduction in part or whole without written permission of CWS Coil Winding Specialist is prohibited.

DIMENSIONAL TOLERANCES
INCHES (MM)

A	B	C	D	X	Y	Z
MAX 2.53 [64.30]	MAX 2.17 [55.00]	MAX 0.50 [12.70]	TYP 0.14 [3.60]	TYP 1.54 [39.00]	TYP 1.10 [28.00]	TYP 0.18 [4.50]

REVISION HISTORY

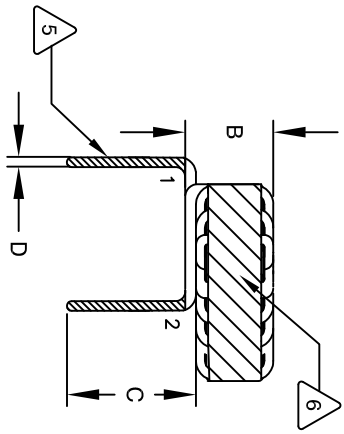
REV	ECN	DESCRIPTION	BY	DATE	CHK	DATE
A	-	INITIAL RELEASE	TN	06/08/21	JL	06/08/21
B	-	UPDATED LEAD WIRES CONSTRUCTION	TN	06/09/21	JL	06/09/21



SCHEMATIC

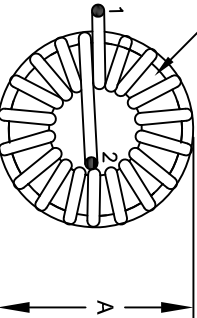
7 BUILD TO ROHS COMPLIANCE AND LEAD FREE.

6 USING A PERMANENT MARKING METHOD
MARK PART NUMBER AND REVISION, IF APPLICABLE
WRAP INDUCTOR WITH GLASS TAPE



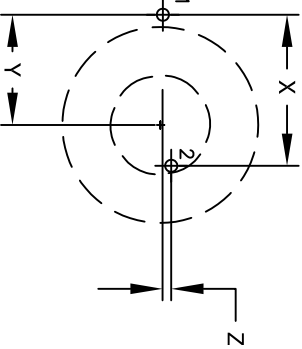
FRONT VIEW

5 TANGENT TO THE CORE
(I.E. COIL MUST REST FLAT ON PCB), LEADS MUST BE
FLUSH WITH THE COIL EDGE, AS SHOWN
REMOVE INSULATION AND TIN LEADS 0.50 INCH,
WIND COILS EVENLY SPACED AROUND THE CORE



BOTTOM VIEW

4 CONSTRUCTION:
THESE SPECIFICATIONS ARE BASED ON LOW RIPPLE CURRENT
WEIGHT: 515 GRAMS TYPICAL
INTERWINDING CAPACITANCE = 18pF TYP @ SRF
SRF = 3.8MHz TYPICAL
|Z| = 17.4 KILLO-OHMS TYP @ SRF
RECOMMENDED AMBIENT OPERATING TEMP: -40°C TO 120°C
HIPOT TEST FOR WINDING TO CORE ISOLATION = 1250 VDC 10 SEC
CURRENT RATING : 50 AMPS, 50°C TEMP. RISE WITH SOME AIR FLOW
DCR = 4.0 MILLI-OHMS MAX.
INDUCTOR DC BIAS: SEE TABLE ON THE RIGHT
INDUCTANCE = 100uH±15% @ 0 AMP DC BIAS, 1.0 KHz, 300mV



MOUNTING HOLES PATTERN

3 SPECIFICATIONS @ 25°C :

2 WIRE: UL RECOGNIZED 200°C RATED MAGNET WIRE
CORE: POWDERED TOROIDAL CORE, CWS BYTE-MARK OR OTHER APPROVED PART

1 MATERIAL: UL RECOGNIZED 94V-0 FOR FLAMMABILITY, RATING CLASS K (200°C MIN.) REQUIRED
ANY TOLERANCE. THIS DIM. CAN VARY A LITTLE FROM PART TO PART.
TYP IN DIM. TOL. TABLE REFERS TO A NON-CRITICAL TYPICAL (AVERAGE) DIM. WITHOUT
NOTES: UNLESS OTHERWISE STATED, READ NOTES FROM BOTTOM UP.
CAGE CODE: 5DMEZ

DC BIAS TABLE

DC BIAS (AMP)	L@1KHz (REF)
0	100uH
5	98uH
10	97uH
15	95uH
20	94uH
30	89uH
40	83uH
50	75uH

PARTS LIST

CODE IDENT	MFG. P/N	DESCRIPTION	ITEM NO.
AUTOCAD SOLIDWORKS SIGN DATE X			
DRWN	TN	06/08/21	
CHKD	JL	06/08/21	
ENGR	JL	06/08/21	
APPR	JL	06/08/21	
TITLE:		CWS Coil Winding Specialist	
DRAWN:		353 W Grove Ave	
CHKD:		Orange, CA 92865	
ENGR:		CWS Coil Winding Specialist	
APPR:		TOROIDAL POWER INDUCTOR	
SIZE Dwg. No.		100uH, 50 Amps, Horizontal	
SCALE		HF4672-101M-50AM	
SHEET		2=1	
REV		B	
SHEET		1 OF 1	