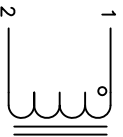


The information contained in this drawing is the sole property of CWS Coil Winding Specialist. Any reproduction in part or whole without written permission of CWS Coil Winding Specialist is prohibited.

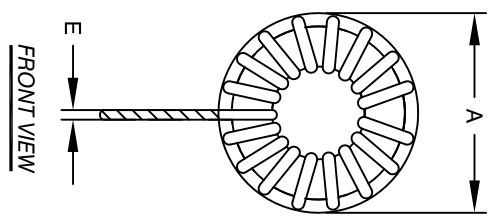
DIMENSIONAL TOLERANCE				
A	C (HGT)	D (LEAD)	E (LEAD OD)	X
MAX	MAX	TYP	TYP	REF
2.68± [68.0]	1.73± [44.0]	.50± [12.7]	.091± [2.30]	1.50± [38.10]

REVISION HISTORY			SIGN & DATE		
REV	ECN	DESCRIPTION	BY	DATE	CHK
A	150619	PRODUCTION RELEASE	AK	1/20/17	1/20/17

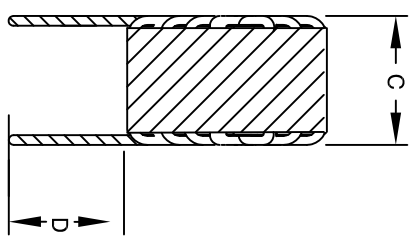


SCHEMATIC

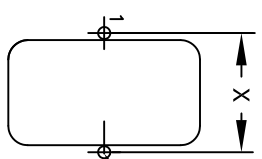
- 7 BUILD TO ROHS COMPLIANCE
- 6 IF APPLICABLE, MARK PART NUMBER AND REVISION
- 5 POSITION LEADS AS REQUIRED REMOVE WIRE INSULATION AND TIN WIND COILS EVENLY SPACED CONSTRUCTION:



FRONT VIEW



SIDE VIEW



MOUNTING HOLES PATTERN (VERTICAL)

- 4 WEIGHT:-620 GRAMS  
HIPOT WINDING-TO-CORE 1250 VAC, 10 SEC  
INTERWINDING CAPACITANCE 75 pF TYPICAL @ 10 KHZ  
DCR=25 MILLIOHMS MAX  
SFR~ 790 KHZ TYPICAL  
MAX TEMP. RISE @ IDC 25 AMP, LESS THAN 50°C WITH NO AIRFLOW  
INDUCTANCE @ 0 AMP = 560 uH +/- 15% (LESS THAN 10% RIPPLE).  
TEST FREQUENCY 1 KHZL TEST VOLTAGE: 250 mV  
RATED MAX. CURRENT=25 AMPS RMS; FREQUENCY: 1 KHZ  
OPERATING TEMPERATURE RANGE: -40° TO 180°C  
SPECIFICATIONS @ 25°C

- 2 WIRE: UL RECOGNIZED 200°C RATED MAGNET WIRE  
CORE: HIGH TEMP POWDERED CORE
- 1 RATING UL-CLASS H (180°) REQUIRED  
MATERIAL: UL RECOGNIZED

NOTES: TOROIDAL POWER CHOKE. ALL DIMENSIONS IN INCHES

UNLESS OTHERWISE SPECIFIED  
DIMENSIONING AND TOLERANCE PER ANSI Y14.5M  
ALL DIMENSIONS ARE IN INCHES AND [MILLIMETERS].  
TOLERANCE INCHES:  
.XXX=±.005 .XX=±.015 <math>\phi</math>=±0.30'  
.XX=±.127 .X=±.38 <math>\phi</math>=±0.30'  
ANGLE PROJECTION DO NOT SCALE DRAWING

AUTOCAD SOLIDWORKS		X		PARTS LIST	
SIGN	DATE	DATE	DESCRIPTION	QTY	REV
AK	6/19/15	6/19/15	COILS COM, INC		
JM	6/19/15		353 WEST GROVE		
BO	6/19/15		ORANGE, CA 92865		
BO	6/19/15		CWS Coil Winding Specialist.		
BO	6/19/15		Power Inductor		
BO	6/19/15		560 uH, 25 Amp Vertical		
BO	6/19/15		HF5712-561M-25AV		