

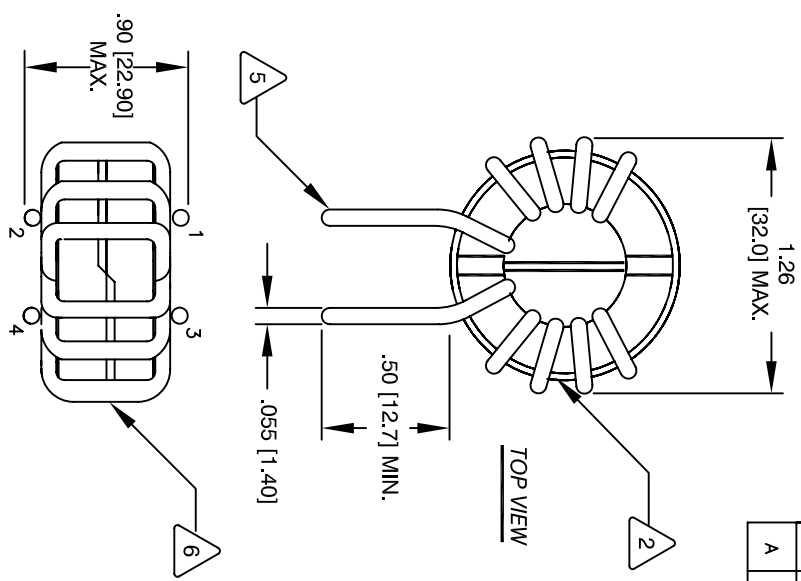
The information contained in this drawing is the sole property of Coil Winding Specialist, Inc. Any reproduction in part or whole without written permission of Coil Winding Specialist, Inc. is prohibited.

REVISION HISTORY		SIGN & DATE				
REV	ECN	DESCRIPTION	BY	DATE	CHK	DATE
A		PRODUCTION RELEASE	RCL	7/13/11	JLJU	7/13/11

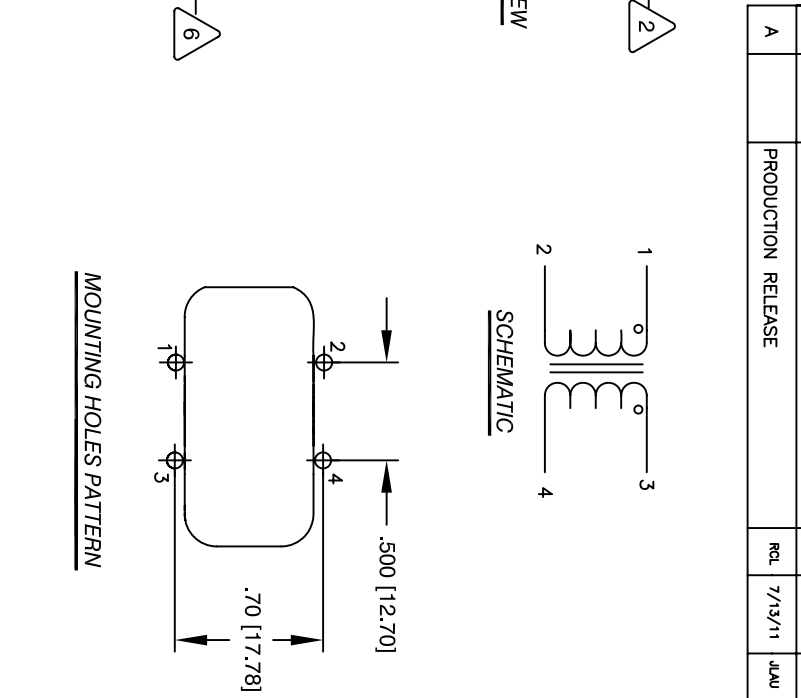
- 6 BUILT TO ROHS COMPLIANCE AND LEAD FREE  
PACKAGIN BOX  
MARK PART NUMBER AND REVISION ON
- 5 FLUSH WITH THE COIL EDGE, AS SHOWN  
REMOVE INSULATION AND TIN LEADS
- 4 WIND ON EACH SIDE TO CORE AND EVENLY SPACED  
CONSTRUCTION:

- 2 WIRE: UL RECOGNIZED 155° OR HIGHER RATED MAGNET WIRE  
CWS BYTEMARK OR OTHER APPROVED PART  
CORE: FERRITE TOROID, HIGH PERM MNZN
- 1 BOBBIN RATING CLASS B (130°) REQUIRED  
MATERIAL: UL RECOGNIZED 94V-0 FOR FLAMMABILITY

NOTES: UNLESS OTHERWISE SPECIFIED, READ FROM BOTTOM UP.  
CAGE CODE = 5DMWE2



**TOP VIEW**



**SCHEMATIC**

**MOUNTING HOLES PATTERN**

QTY	CODE IDENT	MFG. P/N	DESCRIPTION	ITEM NO.
			<b>PARTS LIST</b>	
AUTOCAD SOLIDWORKS X				
DRWN	RCL	7/13/11	DATE	
CHKD	JLJU	7/13/11	DATE	
ENGR	JLJU	7/13/11	DATE	
APPR	JLJU	7/13/11	DATE	
TITLE:		Common Mode Chokes 500 uH, 10 Amp, Vertical Mount		
SIZE	DWG. NO.	HL-V-501U-10A		
SCALE	NOT TO SCALE	SHEET 1 OF 1		

UNLESS OTHERWISE SPECIFIED	DIMENSIONING AND TOLERANCE PER ANSI Y14.5M AND [MILLIMETERS]
	TOLERANCE INCHES: .005 .015 .030 .050 .100 .150 .250 .500 1.000 2.000 3.000 4.000 5.000 6.000 8.000 10.000 12.000 15.000 20.000 25.000 30.000 40.000 50.000 60.000 80.000 100.000 120.000 150.000 200.000 250.000 300.000 400.000 500.000 600.000 800.000 1000.000
	TOLERANCE METRICS: .005 .015 .030 .050 .100 .150 .250 .500 1.000 2.000 3.000 4.000 5.000 6.000 8.000 10.000 12.000 15.000 20.000 25.000 30.000 40.000 50.000 60.000 80.000 100.000 120.000 150.000 200.000 250.000 300.000 400.000 500.000 600.000 800.000 1000.000
	ANGLE PROJECTION: FIRST ANGLE
	DO NOT SCALE DRAWING