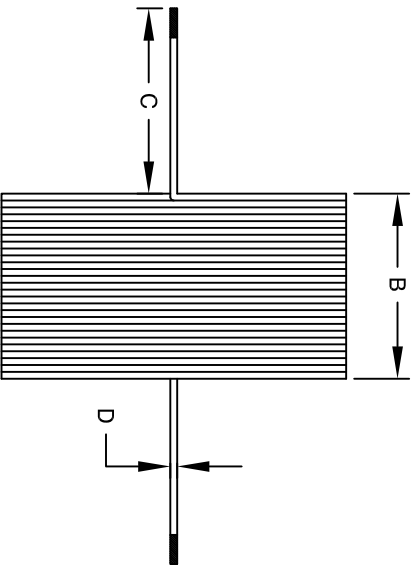
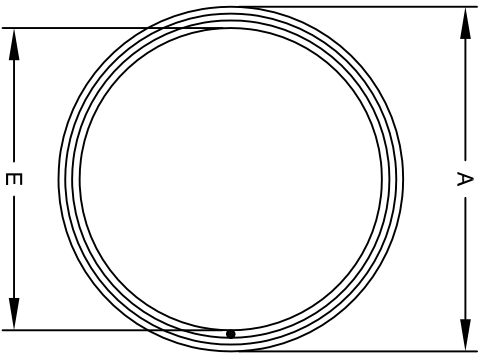
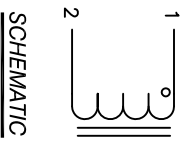


The information contained in this drawing is the sole property of CWS Coil Winding Specialist. Any reproduction in part or whole without written permission of CWS Coil Winding Specialist is prohibited.

DIMENSIONAL TOLERANCES INCHES (MM)					
A	B	C	D	E	
MAX	MAX	MIN	REF	MIN	
3.00 [76.20]	1.12 [28.50]	2.50 [63.50]	0.06 [1.63]	2.52 [64.00]	

REVISION HISTORY						
REV	ECN	DESCRIPTION	BY	DATE	CHK	DATE
A		PRODUCTION RELEASE	JL	11/25/17	JLU	11/25/17



- BUILT TO ROHS COMPLIANCE.
- IF APPLICABLE, LABEL PART NUMBER AND REVISION
- POSITION LEADS AS REQUIRED  
REMOVE WIRE INSULATION AND TIN  
WIND COILS EVENLY SPACED
- CONSTRUCTION:  
DCR = 85mΩ MAX  
SRF > 935 kHz TYP  
MAX TEMP. RISE @ IDC 15 AMP, LESS THAN 40°C WITH NO AIRFLOW  
INDUCTANCE = 165uH TYP.  
TEST FREQUENCY: 1.0 KHZ ; TEST VOLTAGE: 250mv  
RATED MAX. CURRENT = 15 AMPS RMS  
COIL OPERATING TEMPERATURE RANGE : -40° TO 180°C  
SPECIFICATIONS @ 25°C
- WIRE: UL RATED CLASS 200°C  
CORE: AIR
- RATING: UL-CLASS H (180°C) REQUIRED  
MATERIAL: UL RECOGNIZED FLAMMABILITY

NOTES: UNLESS OTHERWISE SPECIFIED, READ NOTES FROM BOTTOM TO UP.

CODE IDENT	MFG. P/N	DESCRIPTION	ITEM NO.
		<b>PARTS LIST</b>	
<b>AUTOCAD SOLIDWORKS</b> X SIGN DATE JL 11/25/17 AM 11/25/17 JL 11/25/17			
TITLE: <b>INDUCTOR COIL, 165 UH AIR COIL, 15 AMPS</b>		CWS Coil Winding Specialist. 353 West Grove Ave. Orange, CA 92865	
UNLESS OTHERWISE SPECIFIED DIMENSIONING AND TOLERANCE PER ANSI Y14.5M AND [MILLIMETERS]. TOLERANCE INCHES: .XX = ±0.015 .X = ±0.030 .XXX = ±0.005 .XX = ±0.015 .X = ±0.030 TOLERANCE METRICS: .XX = ±0.25 .X = ±0.38 .XXX = ±0.127 .XX = ±0.25 .X = ±0.38 ANGLE PROJECTION  DO NOT SCALE DRAWING	SIZE DWG. NO. <b>B</b>	SCALE <b>N/A</b>	REV <b>A</b>