

SCHEMATIC

- 6 WHERE SHOWN, USING A PERMANENT MARKING METHOD
MARK PART NUMBER AND REVISION IN APPROX
- 6 FLUSH WITH THE COIL EDGE, AS SHOWN
LEAD TINNED TO WITHIN 1/8" OF BODY
- 5 REMOVE INSULATION AND

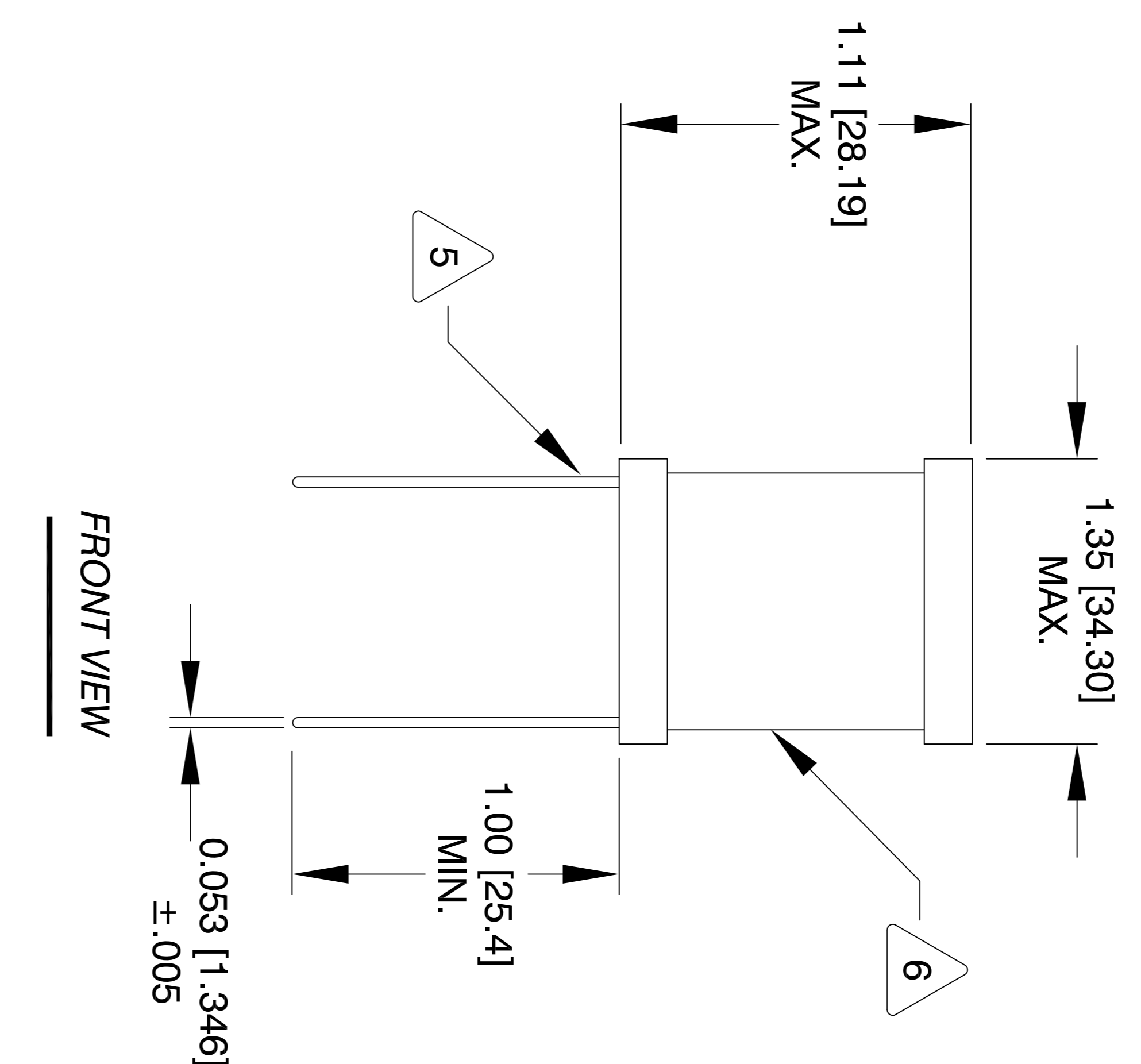
- 4 CONSTRUCTION:
FIX LEADS SPACING PER DRAWING
USE VW-1 RATED SHRINK TUBING TO COVER WINDING
WIND RATED WIRE TO ROD CORE AND EVENLY SPACED

- 3 SPECIFICATIONS @ 25°C
HI-POT CORE TO WIRE = 750 VDC
MAX TEMP RISE AT RATED CURRENT = 35°C
DCR = 279.0 MILLI-OHMS MAX
INDUCTANCE AT DC BIAS: SEE TABLE ON THE RIGHT
RATED CURRENT (DC) = 2.5 AMPS.
L = 1000.0 uH ±10% @ 1KHZ, 0.25 mV, 0 ADC

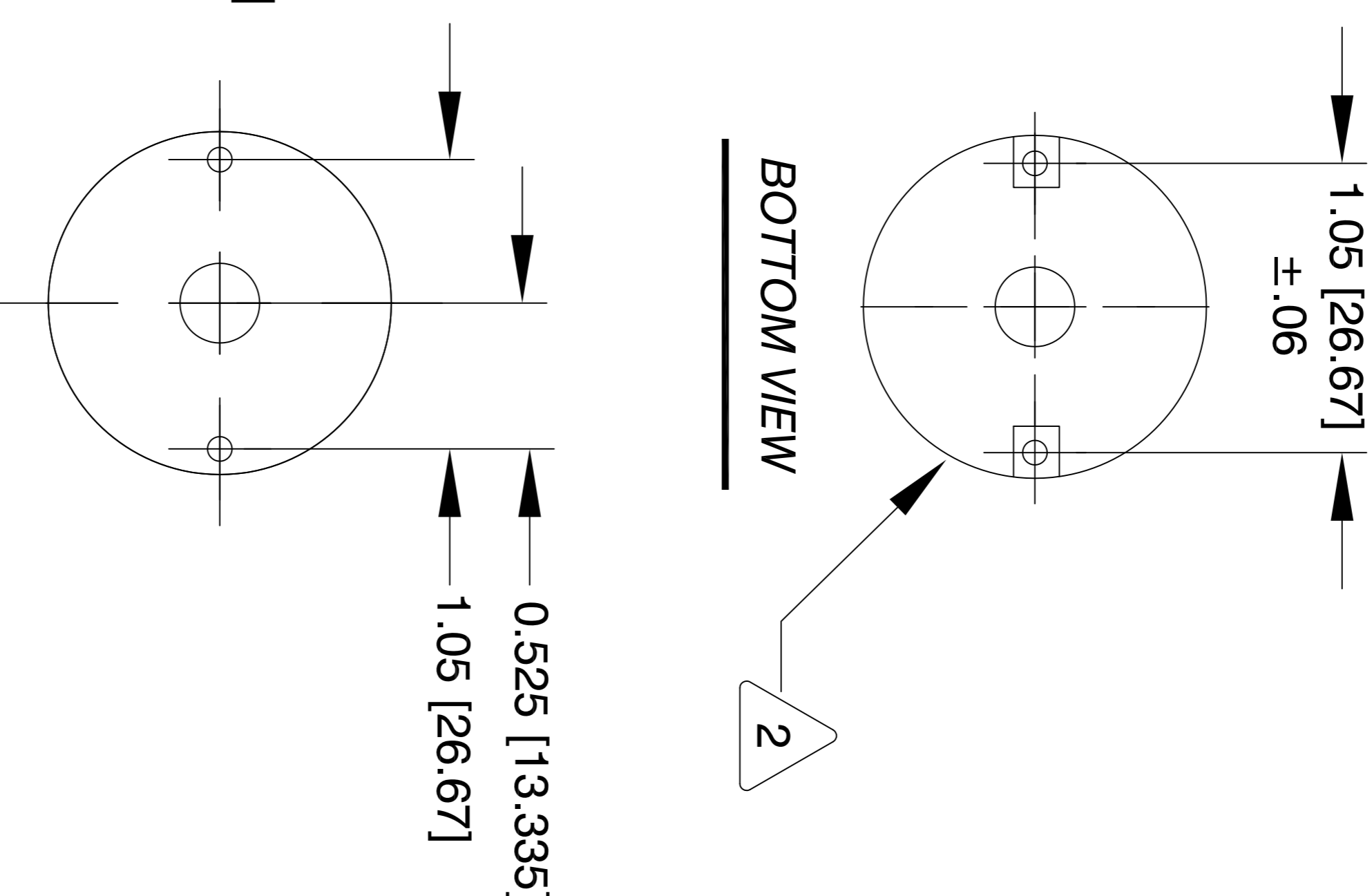
- 2 WIRE: UL RECOGNIZED 130° RATTING MAGNET WIRE
CWS BYTEMARK OR OTHER APPROVED PART
CORE: FERRITE BOBBIN CORE

- 1 MATERIAL: UL RECOGNIZED 94V-0 FOR FLAMMABILITY

NOTES: UNLESS OTHERWISE SPECIFIED. READ FROM BOTTOM UP.



FRONT VIEW

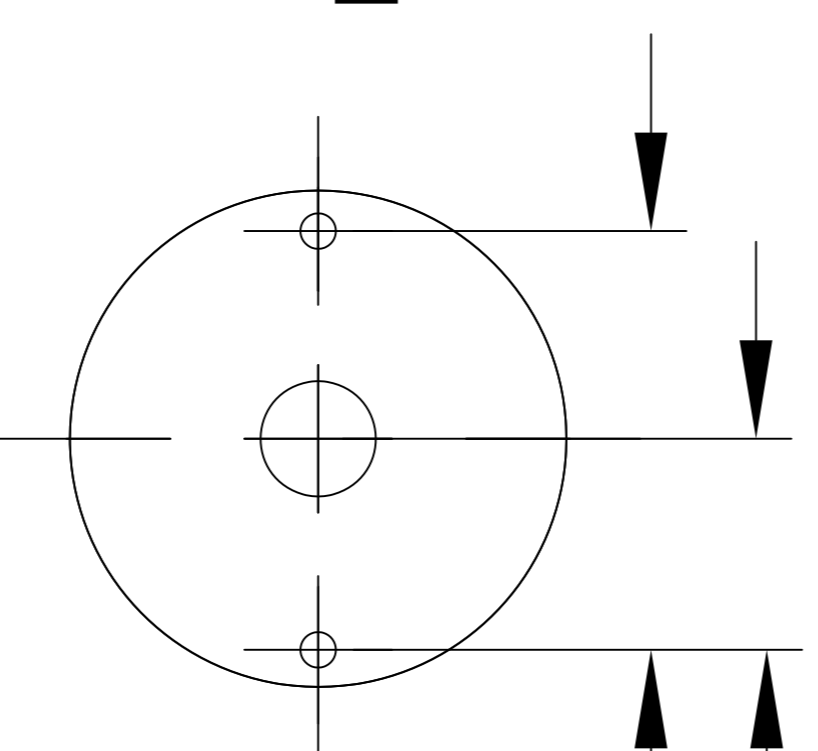


BOTTOM VIEW

DC BIAS TABLE	
DC AMP	L @ 1KHZ
0	1000uH
1.5	960uH
2.0	910uH
2.5	764uH

REVISION HISTORY		SIGN & DATE				
REV	ECN	DESCRIPTION	BY	DATE	CHK	DATE
A		PRODUCTION RELEASE	TDK	3/01/05	JLAU	3/01/05
C1		DIMENSION CORRECTIONS	TN	9/29/17	JLAU	9/29/17
D		REVISED ELECTRICAL SPEC.	TN	9/30/19	JLAU	9/30/19

MOUNTING HOLES PATTERN



CODE IDENT	MFG. P/N	DESCRIPTION	ITEM NO.
PARTS LIST			

UNLESS OTHERWISE SPECIFIED	
DIMENSIONING AND TOLERANCE PER ANSI Y14.5M AND [MILLIMETERS].	
TOLERANCE INCHES: XXX=±.005 .XX=±.015 TOLERANCE METRICS: .XXX=±.127 .XX=±.38	∠=±0°30' ∠=±0°30'
ANGLE PROJECTION	DO NOT SCALE DRAWING

AUTOCAD SOLIDWORKS	X	COILWS COM, INC www.coilws.com		CWS Coil Winding Specialist. 353 West Grove Ave. Orange, CA 92865	
SIGN	DATE	TITLE:	High Current RF Chokes		
DRWN TDK	3/01/05	ENGR. KSUM	3/01/05	SIZE DWG. NO.	J-5617
CHECKED JLAU	3/01/05	APPR. JLAU	3/01/05	SCALE	2=1
PARTS LIST			SCALE	2=1	SHEET 1 OF 1