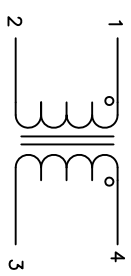


The information contained in this drawing is the sole property of Coil Winding Specialist Inc. (CWS). Any reproduction in part or whole without written permission of CWS is prohibited.



SCHEMATIC

- 7 BUILT TO ROHS COMPLIANCE AND LEAD FREE
- 6 LABEL PART NUMBER, REVISION AND DATE CODE.
- 5 WRAP CHOKE WITH GLASS TAPE
- 4 TIN LEADS 0.5 INCH MIN. AND FLUSH WITH THE COIL EDGE.

WEIGHT = 36 GRAMS TYP
 OPERATING TEMP RANGE = -25°C TO 120°C
 MAX TEMP RISE = 40°C WITH SOME AIR FLOW
 INTERWINDING ISOLATION = 2500 VOLTS RMS, 3 mA, 2 sec.
 RATED CURRENT = 8.0 AMPS
 INSULATION RESISTANCE = 100 MEGA-OHMS MIN. @ 1000 VAC
 RATED VOLTAGE = 1000 VAC
 LEAKAGE INDUCTANCE = 9.5µH TYP @ 10KHz, 0.25Vrms
 SRF = 1.55MHz TYPICAL
 INTERWINDING CAPACITANCE = 3pF TYP @ SRF
 IMPEDANCE = 9.6kΩ TYP @ SRF
 DCR ON EACH WINDING = 13mΩ MAX.
 L = 15mH TYP @ 1KHz, 250Vrms, 0 ADC
 SPECIFICATIONS AT 25°C:

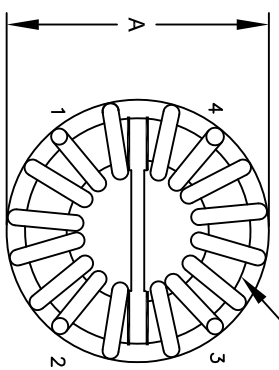
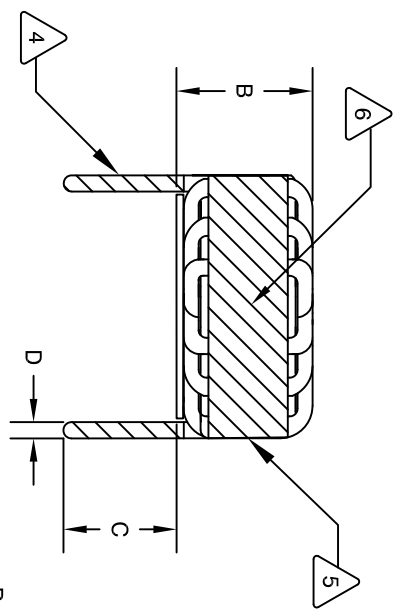
WIRE: UL RECOGNIZED 155°C RATED MAGNET WIRE
 CWS BYTEMARK OR OTHER APPROVED PART
 CORE: NANOCRYSTALLINE OR AMORPHOUS CORE

BOBBIN/CASE = UL CLASS B (130°)
 1 MATERIAL: UL RECOGNIZED 94V-0 FOR FLAMMABILITY

ANY TOLERANCE. THIS DIM. CAN VARY A LITTLE FROM PART TO PART.
 *TYP IN DIM. TABLE REFERS TO A NON-CRITICAL TYPICAL (AVERAGE) DIM. WITHOUT NOTES. UNLESS OTHERWISE SPECIFIED, READ NOTES FROM BOTTOM UP.
 CAGE CODE: 5DME2

EP FORM0005 REV 4 2011

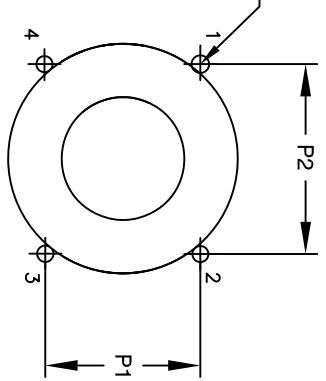
DIMENSIONAL TOLERANCE INCHES [MM]					
A(OD) MAX	B(HGHT) MIN	C(LEAD) MIN	D(LEAD DIA) TYP	P1 REF	P2 REF
1.30 [33.00]	0.75 [19.00]	0.50 [12.7]	0.05 [1.29]	0.37 [9.50]	1.18 [30.00]



BOTTOM VIEW

REVISION HISTORY			
REV	ECN	DESCRIPTION	DATE
A		PRODUCTION RELEASE	01/20/2021

Recommended PCB hole (X4): Ø0.065[1.65]



MOUNTING HOLES PATTERN

QTY	CODE IDENT	MFG. P/N	DESCRIPTION	ITEM NO.
			PARTS LIST	
AUTOCAD SOLIDWORKS		X		
DRWN	TN	DATE	TITLE: Nanocrystalline Inductor Common Mode Chokes Horizontal Mount	
ENGR	JL	01/20/2021	www.coilws.com	
APPR	JL	01/20/2021	353 West Grove Ave Orange, California, 92865	
UNLESS OTHERWISE SPECIFIED		DIMENSIONING AND TOLERANCE PER ANSI Y14.5M AND [DIMETERS]		
TOLERANCE INCHES:		XXX=±.005 XX=±.015 X=±.030		
TOLERANCE METRICS:		XXX=±.127 XX=±.38 X=±.95		
ANGLE PROJECTION		DO NOT SCALE DRAWING		
SIZE	DWG. NO.	SCALE	NOT TO SCALE	REV
B	KN-H-153U-8.0A			A
SHEET 1		OF 1		

CAD-FILE: