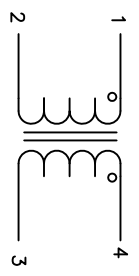


The information contained in this drawing is the sole property of Coil Winding Specialist Inc. (CWS) Any reproduction in part or whole without written permission of CWS is prohibited.



SCHEMATIC

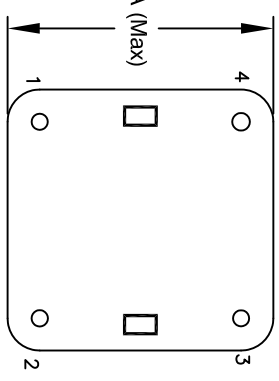
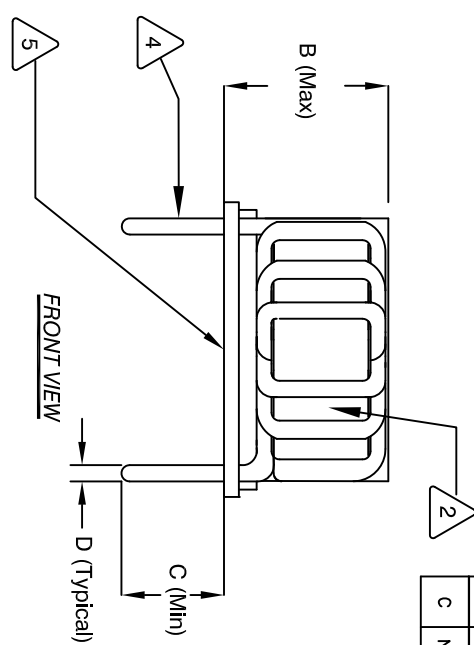
DIMENSIONAL TOLERANCE INCHES [MM]						
A(WIDTH) Max	B(HEIGHT) Max	C(LEAD) Min	D(LEAD DIA) TYP	E (Min/Max)	P1 Ref	P2 Ref
1.97 [50.00]	1.23 [31.3]	0.5 [12.7]	0.08 [2.1]		1.36 [34.6]	1.36 [34.6]

REVISION HISTORY						
REV	ECN	DESCRIPTION	BY	DATE	CHK	DATE
A	1	PRODUCTION RELEASE	KC	12/16/10	JLU	12/16/10
B	N/A	UPDATED ELEC. & MECH. SPEC.	TN	2/6/2018	JL	2/6/2018
C	N/A	ADDED MOUNTING HOLES DIAMETER	TN	08/10/18	JL	08/10/18

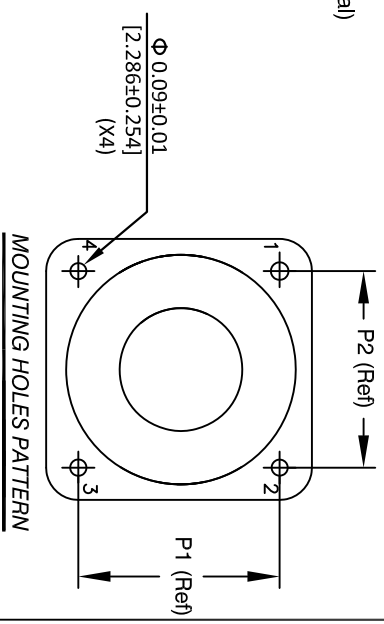
- 6 BUILT TO ROHS COMPLIANCE
- 5 LABEL PN#, REVISION AND DATE CODE
- 4 TIN LEADS APPROX. 0.5 INCH AND FLUSH WITH THE COIL EDGE.

- 2 WIRE: UL RECOGNIZED 200°C RATED MAGNET WIRE
CWS BYTEMARK OR OTHER APPROVED PART
CORE: NANOCRYSTALLINE OR AMORPHOUS CORE
- 1 MATERIAL: UL RECOGNIZED 94V-0 FOR FLAMMABILITY

NOTES: UNLESS OTHERWISE SPECIFIED, READ NOTES FROM BOTTOM TO TOP.



BOTTOM VIEW



MOUNTING HOLES PATTERN

QTY	CODE IDENT	MFG. P/N	DESCRIPTION	ITEM NO.
			PARTS LIST	
			www.coilws.com	
			Coil Winding Specialist Inc.	
			353 West Grove Ave	
			Orange, California, 92865	
			sales@coilws.com	
			TITLE: Nanocrystalline Inductor	
			Common Mode Chokes	
			Horizontal Mount	
			SIZE Dwg. No. KN-H-203U-21A	
			SCALE 2=1	
			REVISION C	

UNLESS OTHERWISE SPECIFIED
DIMENSIONING AND TOLERANCE PER ANSI Y14.5M
ALL DIMENSIONS ARE IN INCHES AND [MILLIMETERS]
TOLERANCE INCHES: \pm = ±0.30'
XXX = ±0.005 XX = ±0.015
TOLERANCE METRICES: \pm = ±0.30'
XXX = ±.127 XX = ±.38

ANGLE PROJECTION ϕ
DO NOT SCALE DRAWING