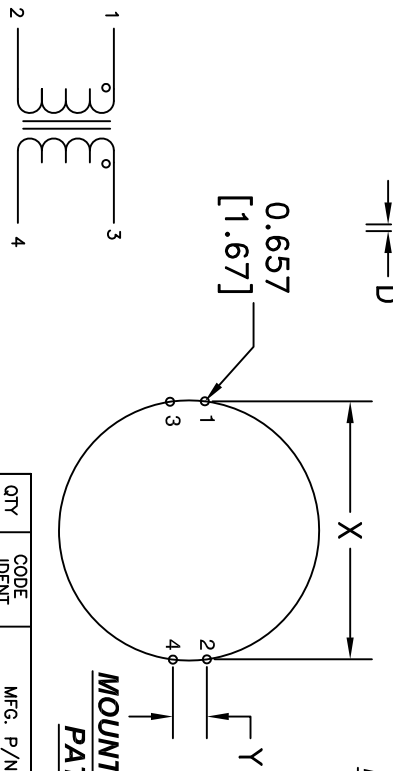
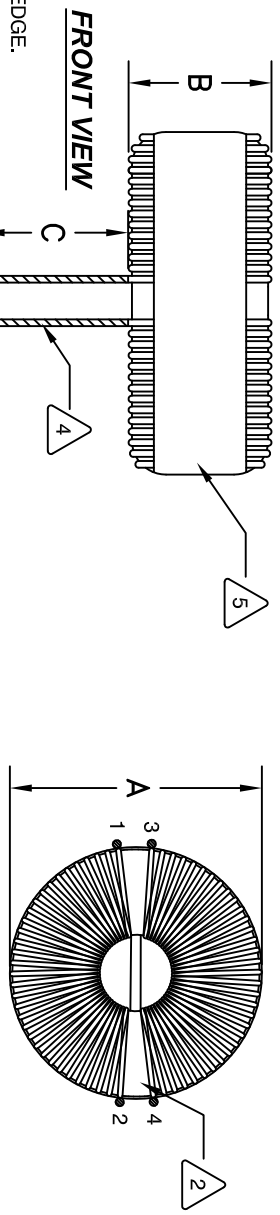


The information contained in this drawing is the sole property of Coil Winding Specialist Inc. (CWS) Any reproduction in part or whole without written permission of CWS is prohibited.

DIMENSIONAL TOLERANCE INCHES [MM]					
A	B	C	D	X	Y
MAX	MAX	MIN	TYP		
1.89	1.08	0.75	0.0571	1.616	0.474
[48.00]	[27.50]	[19.05]	[1.45]	[41.05]	[12.05]

REVISION HISTORY			
REV	ECN	DESCRIPTION	BY
A		PRODUCTION RELEASE	JL
			DATE
			05/12/17
			05/12/17



- 6 BUILT TO ROHS COMPLIANCE AND LEAD FREE.
- 5 MARK PART NUMBER AND REVISION.
- 4 TIN LEADS APPROX. 0.75 INCH AND FLUSH WITH THE COIL EDGE.

WEIGHT = 155 GRAMS
 OPERATING TEMP RANGE = -25 °C TO 120°C
 MAX TEMP RISE = 40 °C
 INTERWINDING ISOLATION = 2000 VOLTS RMS.
 DCR ON EACH WINDING = 25 mΩ MAX.
 SRF = 620 KHz
 RATED VOLTAGE = 250 VAC OR VDC
 RATED CURRENT = 12 AMPS
 LEAKAGE INDUCTANCE = 63 uH TYP @ 10KHz 1 Vrms.
 INTERWINDING CAPACITANCE = 40 pF TYP @ SRF.
 IMPEDANCE = 8.5 kΩ MIN. @ SRF.
 IMPEDANCE = 6.0 kΩ MIN. @ 1 MHz.
 L = 5.6 mH REF. @ 1 KHz, 1 Vrms, 0 ADC
 INSULATION RESISTANCE = 100 MEGA-OHMS MIN. @ 500 VDC
 SPECIFICATIONS AT 25°C:

- 3 WIRE: UL RECOGNIZED 200°C RATED MAGNET WIRE
 CWS BYTEMARK OR OTHER APPROVED PART
 CORE: NANOCRYSTALLINE OR AMORPHOUS CORE
- 2 BOBBIN RATING CLASS B (200°C) REQUIRED
 MATERIAL: UL RECOGNIZED 94V-0 FOR FLAMMABILITY

NOTES: UNLESS OTHERWISE SPECIFIED, READ NOTES FROM BOTTOM TO TOP.

EP FORM0005 REV 4 2011

QTY	CODE	MFG. P/N	DESCRIPTION	ITEM NO.
	IDENT			
PARTS LIST				
AUTOCAD		www.coilw.com Coil Winding Specialist Inc.		
SOLIDWORKS		353 West Grove Ave sales@coilw.com		
SIGN		Orange, California, 92865		
DRWN	JL	DATE	05/12/17	TITLE: Nanocrystalline Inductor
CHGD	AK	DATE	05/12/17	Common Mode Choke
ENGR	JLJU	DATE	05/12/17	Vertical Mount
APPR	JLJU	DATE	05/12/17	
DO NOT SCALE DRAWING		SCALE	B	SIZE [UNC. MD]
		SCALE	NOT TO SCALE	KN-H-562U-12A
		SHEET	1	OF 1
		REV	A	

CAD-FILE: