

The information contained in this drawing is the sole property of Coil Winding Specialist, Inc. Any reproduction in part or whole without written permission of Coil Winding Specialist, Inc. is prohibited.

REVISION HISTORY

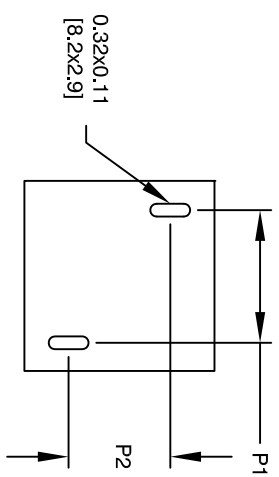
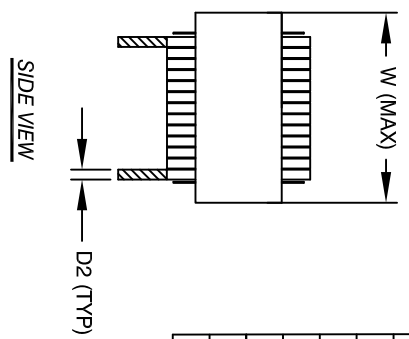
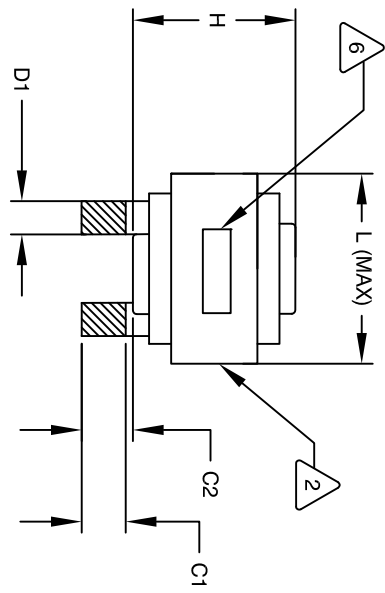
REV	ECN	DESCRIPTION	DATE
A		PRODUCTION RELEASE	02/05/19

SIGN & DATE

BY	DATE	CHK	DATE
TN	02/05/19	JL	02/05/19

DIMENSIONAL TOLERANCE

	mm	inch
C1	12.00±1.00	0.47±0.04
C2	13.00±1.00	0.51±0.04
D1	7.60 (TYP)	0.30 (TYP)
D2	2.60 (TYP)	0.10 (TYP)
L	57.15 MAX	2.25 MAX
W	57.15 MAX	2.25 MAX
H	43.70±3.00	1.72±0.12
P1	34.4±3.00	1.35±0.12
P2	27.6±2.00	1.09±0.08



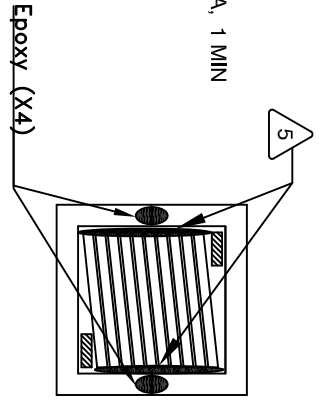
DC-BIAS	L
0A	36 uH
10A	36 uH
20A	35 uH
30A	34 uH
40A	33 uH
50A	33 uH
60A	32 uH
70A	32 uH
80A	31 uH
90A	30 uH
100A	30 uH
120A	28 uH
140A	26 uH
160A	25 uH
180A	24 uH

3 SPECIFICATIONS @ 25°C:
 L = 35 uH ± 15%, MEASURED AT 10 KHz, 0.25V, ZERO DC BIAS
 RATED CURRENT: 180 AMPS WITH FORCED AIR FLOW
 DCR = 1.25 MILLI-OHMS MAX.
 DC BIAS: SEE TABLE ON THE RIGHT.

2 VARNISH DOLPH or EQUAL
 SILICONE DOW CORNING OR EQUAL
 NYLAR SHEETS FOR SIDES AND CENTER LEG OF CORES
 OUTER WRAP: 3M GLASS TAPE OR EQUAL
 WIRE: UL RECOGNIZED 200°C RATED MAGNET WIRE
 CORE: COMPACTED POWDERED CORE

1 INSULATION CLASS 200°C REQUIRED
 MATERIAL: UL RECOGNIZED 94V-0 FOR FLAMMABILITY

NOTES: UNLESS OTHERWISE SPECIFIED, READ FROM BOTTOM UP.
 CAGE CODE: 5DME2



BOTTOM VIEW

QTY	CODE IDENT	MFG. P/N	DESCRIPTION	ITEM NO.
			PARTS LIST	

UNLESS OTHERWISE SPECIFIED	www.coilws.com		Coil Winding Specialist, Inc.	
DIMENSIONING AND TOLERANCE PER ANSI Y14.5M	DRWN	TN	11/30/18	353 W. GROVE AVE
ALL DIMENSIONS ARE IN INCHES AND [MILLIMETERS].	ENGR	JL	11/30/18	ORANGE, CA 92865

DIMENSIONING AND TOLERANCE PER ANSI Y14.5M		TOLERANCE INCHES:		TOLERANCE METRICS:		ANGLE PROJECTION		DO NOT SCALE DRAWING	
XX	±0.10	XX	±0.20	XX	±0.254	XX	±0.51		
XX	±0.254	XX	±0.51	XX	±0.254	XX	±0.51		
XX	±0.51	XX	±1.02	XX	±1.27	XX	±1.27		