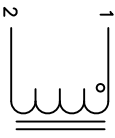


REVISION HISTORY		SIGN & DATE	
REV	ENR	BY	DATE
A		TN	02/06/19

DESCRIPTION		SIGN & DATE	
REV	ENR	BY	DATE
		TN	02/06/19



SCHEMATIC

7 BUILT TO ROHS COMPLIANCE AND LEAD FREE.

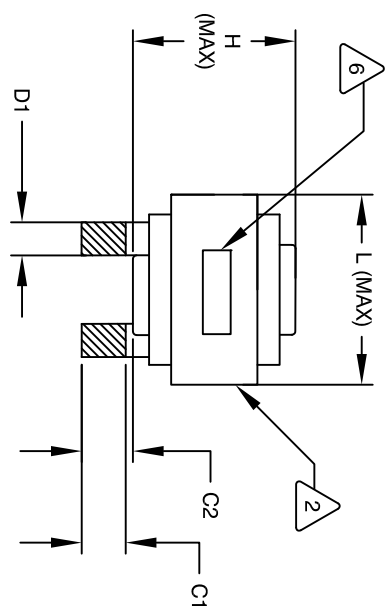
6 MARK PART NUMBER AND REVISION WHERE SHOWN

5 VARNISH PART AND CURE APPLY SILICONE WHERE SHOWN

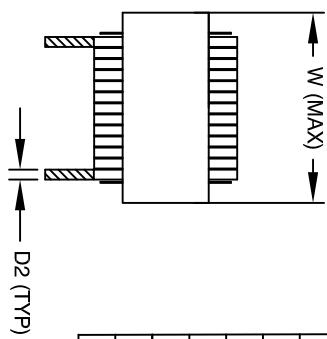
4 CONSTRUCTION  
 WRAP TAPE AROUND CORES WITH CORES AND MYLAR SHEETS ASSEMBLE PRE FORMED FLAT RECTANGULAR HELICAL COIL

3 SPECIFICATIONS @ 25°C:  
 VARNISH DOLPH or EQUAL  
 SILICONE DOW CORNING OR EQUAL  
 MYLAR SHEETS FOR SIDES AND CENTER LEG OF CORES  
 OUTER WRAP: 3M GLASS TAPE OR EQUAL  
 WIRE: UL RECOGNIZED 200°C RATED MAGNET WIRE  
 CORE: COMPACTED POWDERED CORE

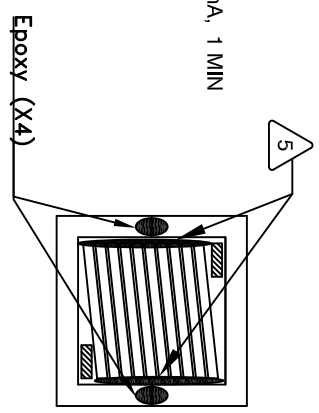
WEIGHT: 484 GRAMS TYP  
 MAX INDUCTOR TEMP RATING: 200°C  
 RECOMMENDED OPERATING TEMP: -40°C TO 85°C  
 HI-POT TEST FOR WINDING TO CORE ISOLATION: 1000VDC @ 2mA, 1 MIN  
 INTERWINDING CAPACITANCE = 9 pF TYP @ SRF  
 |Z| = 22 KIL-OHMS TYP @ SRF  
 SRF = 2.25 MHZ TYP  
 RATED CURRENT: 40 AMPS WITH FORCED AIR FLOW  
 DCR = 15 MILLIOHMS MAX.  
 DC BIAS: SEE TABLE ON THE RIGHT  
 L = 350 uH ± 15%, MEASURED AT 10 KHZ, 0.25V, ZERO DC BIAS



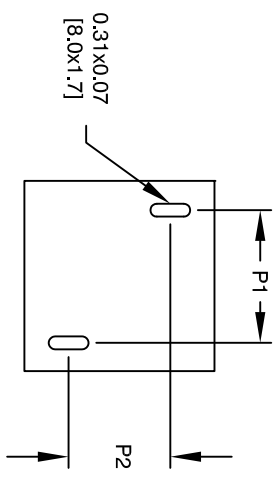
FRONT VIEW



SIDE VIEW



BOTTOM VIEW



MOUNTING HOLES PATTERN

**DIMENSIONAL TOLERANCE**

	mm	inch
C1	12.00±1.00	0.47±0.04
C2	13.00±1.00	0.51±0.04
D2	0.70 (TYP)	0.03 (TYP)
D1	7.00 (TYP)	0.30 (TYP)
L	57.15 MAX	2.25 MAX
W	57.15 MAX	2.25 MAX
H	44.15 MAX	1.74 MAX
P2	36.30±1.00	1.43±0.04
P1	27.00±1.00	1.06±0.04

**DC BIAS TABLE**

DC BIAS	L @10KHz (TYP)
0A	362 uH
5A	350 uH
10A	335 uH
15A	317 uH
20A	295 uH
25A	272 uH
30A	249 uH
35A	214 uH
40A	142 uH

2

1 MATERIAL: UL RECOGNIZED 94V-0 FOR FLAMMABILITY

CAGE CODE: 5DME2

NOTES: UNLESS OTHERWISE SPECIFIED, READ FROM BOTTOM UP.

QTY	CODE IDENT	MFG. P/N	DESCRIPTION	ITEM NO.
			<b>PARTS LIST</b>	
			www.coilws.com	
			sales@coilws.com	
			Coil Winding Specialist, Inc.	
			353 W. GROVE AVE	
			ORANGE, CA 92665	
			<b>TITLE:</b>	
			High Current Inductor,	
			Rectangular Helical Coil	
			350 uH, 40 Amps, Horizontal	
			<b>SIZE DIM. NO.</b>	
			B LCEK28B6-351M-40AH	
			<b>SCALE</b>	
			NOT TO SCALE	
			<b>DO NOT SCALE DRAWING</b>	
			<b>UNLESS OTHERWISE SPECIFIED</b>	
			DIMENSIONING AND TOLERANCE PER ANSI Y14.5M AND [DIMETERS].	
			TOLERANCE INCHES: .XX±.010 .X±.020 .XXX±.254 .XX±.51	
			TOLERANCE METRICS: .X±.030 .XX±.075 .XXX±.152 .XX±.381	
			ANGLE PROJECTION	
			DO NOT SCALE DRAWING	