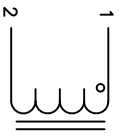


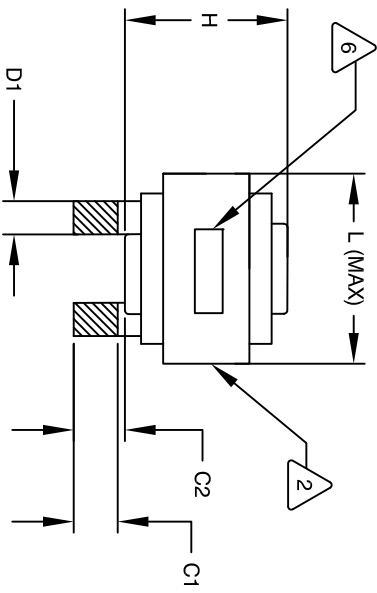
The information contained in this drawing is the sole property of Coil Winding Specialist, Inc. Any reproduction in part or whole without written permission of Coil Winding Specialist, Inc. is prohibited.

REVISION HISTORY

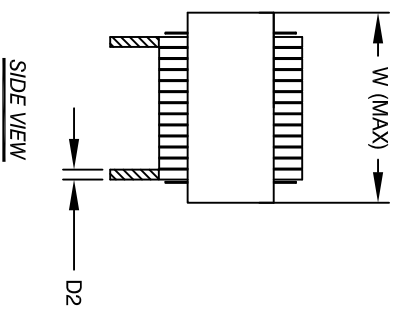
REV	ECN	DESCRIPTION	DATE
A		PRODUCTION RELEASE	11/30/18



SCHEMATIC

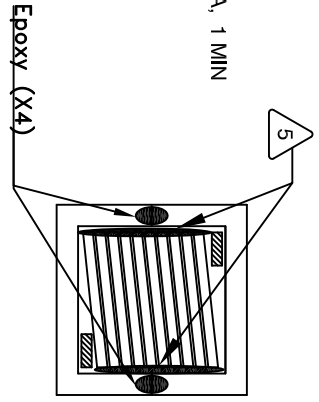


FRONT VIEW

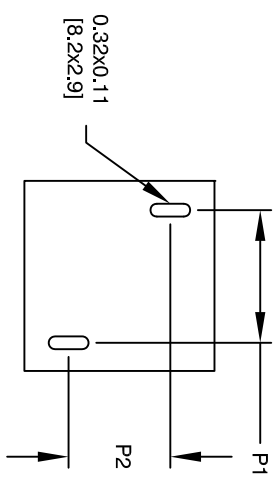


SIDE VIEW

- WEIGHT: 415 GRAM (TYP)  
MAX INDUCTOR TEMP RATING: 200°C  
RECOMMENDED OPERATING TEMP: -40°C TO 85°C  
HI-POT TEST FOR WINDING TO CORE ISOLATION: 1000VDC @ 2mA, 1 MIN  
INTERWINDING CAPACITANCE = 9pF TYP @ SRF  
|Z| = 14 KILO-OHMS TYP @ SRF  
SRF = 9.7 MHz TYP  
RATED CURRENT: 180 AMPS WITH FORCED AIR FLOW  
DCR = 1.25 MILLI-OHMS MAX  
DC BIAS: SEE TABLE ON THE RIGHT  
L = 24 uH ± 15%, MEASURED AT 10 KHZ, 0.25V, ZERO DC BIAS  
SPECIFICATIONS @ 25°C:
- VARNISH DOLPH or EQUAL  
SILICONE DOW CORNING OR EQUAL  
MYLAR SHEETS FOR SIDES AND CENTER LEG OF CORES  
OUTER WRAP: 3M GLASS TAPE OR EQUAL  
WIRE: UL RECOGNIZED 200°C RATED MAGNET WIRE  
CORE: COMPACTED POWDERED CORE
- VARNISH DOLPH or EQUAL  
SILICONE DOW CORNING OR EQUAL  
MYLAR SHEETS FOR SIDES AND CENTER LEG OF CORES  
OUTER WRAP: 3M GLASS TAPE OR EQUAL  
WIRE: UL RECOGNIZED 200°C RATED MAGNET WIRE  
CORE: COMPACTED POWDERED CORE



BOTTOM VIEW



MOUNTING HOLES PATTERN

**DIMENSIONAL TOLERANCE**

	mm	Inch
C1	12.00±1.00	0.47±0.04
C2	13.00±1.00	0.51±0.04
D1	7.60 (TYP)	0.30 (TYP)
D2	2.60 (TYP)	0.10 (TYP)
L	57.15 MAX	2.25 MAX
W	57.15 MAX	2.25 MAX
H	43.7±3.00	1.72±0.12
P1	34.4±3.00	1.35±0.12
P2	27.6±2.00	1.09±0.08

DC-BIAS	L
0A	25 uH
10A	24 uH
20A	23 uH
30A	22 uH
40A	20 uH
50A	20 uH
60A	19 uH
70A	18 uH
80A	16 uH
90A	15 uH
100A	14 uH
120A	12 uH
140A	11 uH
160A	9 uH
180A	8 uH

QTY	CODE IDENT	MFG. P/N	DESCRIPTION	ITEM NO.
			<b>PARTS LIST</b>	

UNLESS OTHERWISE SPECIFIED		AUTOCAD SOLIDWORKS		DRAWN		TITLE:	
DIMENSIONING AND TOLERANCE PER ANSI Y14.5M AND [DIMENSIONS].		SIGN		TN		High Current Inductor, Rectangular Helical Coil	
TOLERANCE INCHES: .XXX±.010 .XX±.020 TOLERANCE METERS: .XXX±.254 .XX±.51		DATE		11/30/18		24 uH, 180 Amps, Horizontal	
ANGLE PROJECTION		DATE		11/30/18		SIZE Dwg. NO.	
DO NOT SCALE DRAWING		DATE		11/30/18		LCES30E4-240M-180AH	

- INSULATION CLASS 200°C REQUIRED MATERIAL: UL RECOGNIZED 94V-0 FOR FLAMMABILITY

NOTES: UNLESS OTHERWISE SPECIFIED, READ FROM BOTTOM UP.

CAGE CODE: 5DME2

REV	DATE	BY	CHK	DATE
TN	11/30/18	JL	JL	11/30/18

SCALE	NOT_TO_SCALE	SHEET	1 OF 1
B			

www.coilw.com  
sales@coilw.com  
Coil Winding Specialist, Inc.  
353 W. GROVE AVE  
ORANGE, CA 92665