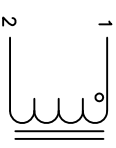


The information contained in this drawing is the sole property of Coil Winding Specialist, Inc. Any reproduction in part or whole without written permission of Coil Winding Specialist, Inc. is prohibited.



SCHEMATIC

- 1 INDUCTOR.
- 2 BUILT TO ROHS COMPLIANCE AND LEAD FREE
- 3 MARK PART NUMBER AND REVISION WHERE SHOWN
- 4 VARNISH PART AND CURE
- 5 APPLY SILICONE WHERE SHOWN
- 6 WRAP TAPE AROUND CORES WITH CORES AND MYLAR SHEETS ASSEMBLE PRE FORMED FLAT RECTANGULAR HELICAL COIL CONSTRUCTION

- 7 WEIGHT: 1906 GRAMS TYP
- 8 CORE LOSS = 0.6 WATTS TYP @ 10KHZ
- 9 MAX INDUCTOR TEMP RATING: 200°C
- 10 RECOMMENDED OPERATING TEMP: -40°C TO 85°C
- 11 HI-POT TEST FOR WINDING TO CORE ISOLATION: 1000VDC @ 2mA, 1 MIN
- 12 INTERWINDING CAPACITANCE = 9 pF TYP @ SRF
- 13 |Z| = 7 KILO-OHMS TYP @ SRF
- 14 SRF = 8.3 MHz TYP
- 15 RATED CURRENT: 400 AMPS WITH FORCED AIR FLOW
- 16 DCR = 0.8 MILLI-OHMS MAX.
- 17 DC BIAS: SEE TABLE ON THE RIGHT
- 18 L = 40 uH ± 15%, MEASURED AT 10 KHZ, 0.25V, ZERO DC BIAS SPECIFICATIONS @ 25°C:

- 19 VARNISH DOLPH or EQUAL
- 20 SILICONE DOW CORNING OR EQUAL
- 21 NYLAR SHEETS FOR SIDES, NOMEX PAPER FOR CENTER LEG OF CORES
- 22 OUTER WRAP: 3M GLASS OR EQUAL
- 23 WIRE: UL RECOGNIZED 200°C RATED MAGNET WIRE
- 24 CORE: COMPACTED POWDERED CORE

- 25 INSULATION CLASS 200°C REQUIRED
- 26 MATERIAL: UL RECOGNIZED 94V-0 FOR FLAMMABILITY

ANY TOLERANCE. THIS DIM. CAN VARY A LITTLE FROM PART TO PART.
 *TYP IN DIM. TABL. TABLE REFERS TO A NON-CRITICAL TYPICAL (AVERAGE) DIM. WITHOUT NOTES: UNLESS OTHERWISE SPECIFIED, READ FROM BOTTOM UP.

CAGE CODE: 5DME2

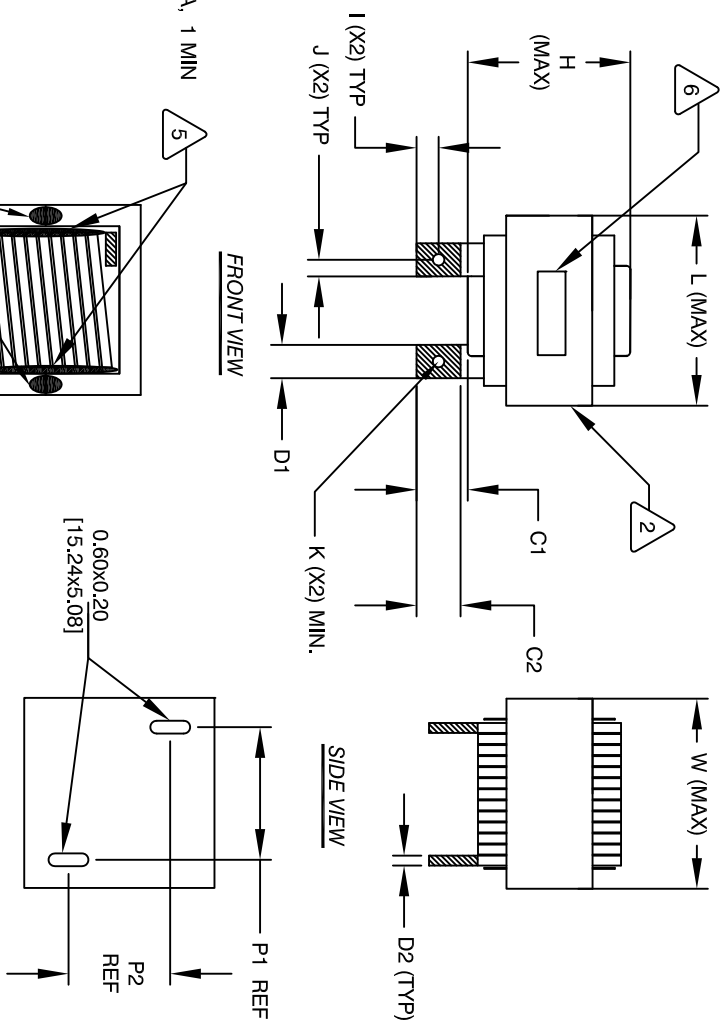
DIMENSIONAL TOLERANCES INCHES (MM)											
C1	C2	D1	D2	L	W	H	I	J	K	P1	P2
0.67 [17.00] REF	0.55 [14.00] REF	0.51 [13.00] TYP	0.16 [4.00] TYP	3.25 [82.50] MAX	3.15 [80.00] MAX	3.15 [80.00] MAX	0.26 [6.50] TYP	0.26 [6.50] TYP	0.27 [6.76] MIN	1.98 [50.30] REF	1.59 [40.39] REF

REV		ECN	DESCRIPTION	BR	DATE	CHK	DATE
A			PRODUCTION RELEASE	TN	02/25/19	JL	02/25/19
B			DEFINED "TYP" IN THE DIM. TABL. REVISED ELEC. SPEC. & DESCRIPTION	TN	04/15/2020	JL	04/15/2020
C			UPDATED ELECTRICAL SPEC.	TN	05/15/2020	JL	05/15/2020

DC BIAS TABLE

DC BIAS (AMP)	L @ 10KHz (REF)
0	42uH
10	40uH
20	39uH
40	35uH
60	31uH
80	28uH
100	25uH
140	18uH
160	16uH
180	14uH
200	13uH
240	12uH
260	11uH
280	10uH
300	9uH
320	8uH
340	8uH
360	7uH
380	7uH
400	6uH

RECOMMENDED MOUNTING HOLES PATTERN



BOTTOM VIEW

Epoxy (X4)

QTY	CODE IDENT	MFG. P/N	DESCRIPTION	ITEM NO.
			PARTS LIST	
			www.coilws.com	
			353 W. GROVE AVE	
			ORANGE, CA 92665	
			Coil Winding Specialist, Inc.	
			High Current Helical Inductor	
			40 uH, 400 Amps, Horizontal	
			SIZE DIM. NO.	
			B LCES38A62 - 400M - 400AH	
			SCALE NOT TO SCALE	
			SHEET 1 OF 1	

UNLESS OTHERWISE SPECIFIED
 DIMENSIONING AND TOLERANCE PER ANSI Y14.5M
 ALL DIMENSIONS ARE IN INCHES AND [DIMENSIONS].
 TOLERANCE INCHES: ϕ=±0.30
 .XXX=±0.10 .XX=±0.20
 TOLERANCE METRCS: .XXX=±.254 .XX=±.51
 ANGLE PROJECTION
 DO NOT SCALE DRAWING