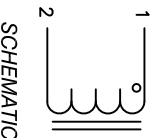


The information contained in this drawing is the sole property of Coil Winding Specialist, Inc. Any reproduction in part or whole without written permission of Coil Winding Specialist, Inc. is prohibited.



REF	MIN	MAX
C1	0.67 [17.02]	0.55 [14.00]
C2	0.55 [14.00]	0.51 [13.00]
D1	0.51 [13.00]	0.16 [4.00]
D2	0.16 [4.00]	3.25 [82.50]
L	3.25 [82.50]	3.15 [80.00]
W	3.15 [80.00]	3.15 [80.00]
H	3.15 [80.00]	0.26 [6.50]
I (X2)	0.26 [6.50]	0.26 [6.50]
J (X2)	0.26 [6.50]	0.27 [6.76]
K (X2)	0.27 [6.76]	1.98 [50.30]
P1	1.98 [50.30]	1.59 [40.39]
P2	1.59 [40.39]	

REV	ECN	DESCRIPTION	DATE
A		PRODUCTION RELEASE	03/09/2020
A1		DEFINED "TYP" IN DIMENSIONAL TOLERANCES	04/15/2020

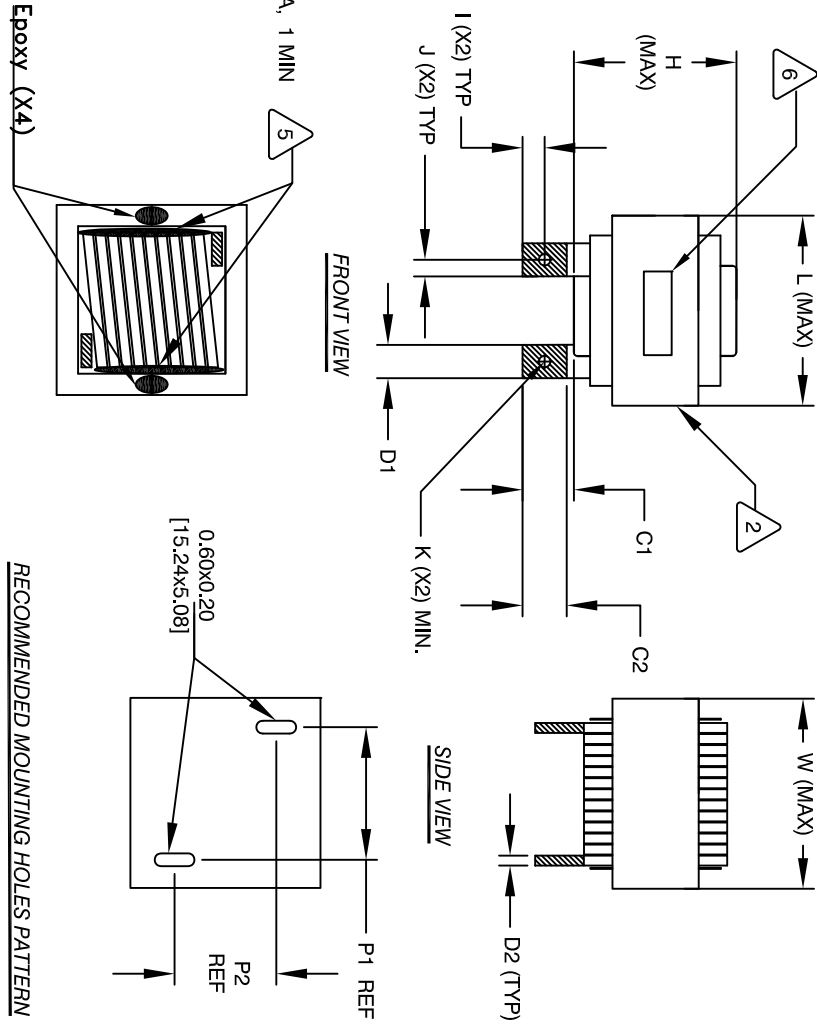
DC BIAS TABLE

DC BIAS (AMP)	L @ 10KHz (REF)
0	59.5uH
10	56.5uH
20	52.8uH
40	44.0uH
60	35.6uH
80	28.9uH
100	23.6uH
140	14.7uH
160	14.0uH
180	13.5uH
200	13.0uH
240	12.5uH
260	12.0uH
280	11.6uH
300	11.0uH
320	10.0uH
340	9.3uH
360	8.6uH
380	7.4uH
400	6.0uH

- BUILT TO ROHS COMPLIANCE AND LEAD FREE.
- MARK PART NUMBER AND REVISION WHERE SHOWN
- VARNISH PART AND CURE APPLY SILICONE WHERE SHOWN
- WRAP TAPE AROUND CORES WITH CORES AND MYLAR SHEETS ASSEMBLE PRE FORMED FLAT RECTANGULAR HELICAL COIL CONSTRUCTION
- WEIGHT: 1906 GRAMS TYP
MAX INDUCTOR TEMP RATING: 200°C
RECOMMENDED OPERATING TEMP: -40°C TO 85°C
HI-POT TEST FOR WINDING TO CORE ISOLATION: 1000VDC @ 2mA, 1 MIN
|Z| = 7.8 KILO-OHMS TYP @ SRF
SRF = 6.05 MHz TYP
RATED CURRENT: 400 AMPS WITH FORCED AIR FLOW
DCR = 0.8 MILLIOHMS MAX.
DC BIAS: SEE TABLE ON THE RIGHT
L = 60uH ± 15%, MEASURED AT 10 KHz, 0.25V, ZERO DC BIAS SPECIFICATIONS @ 25°C.

- VARNISH DOLPH or EQUAL SILICONE DOW CORNING OR EQUAL MYLAR SHEETS FOR SIDES AND CENTER LEG OF CORES OUTER WRAP: 3M GLASS TAPE OR EQUAL WIRE: UL RECOGNIZED 200°C RATED MAGNET WIRE CORE: COMPACTED POWDERED CORE
- INSULATION CLASS 200°C REQUIRED MATERIAL: UL RECOGNIZED 94V-0 FOR FLAMMABILITY

ANY TOLERANCE. THIS DIM. CAN VARY A LITTLE FROM PART TO PART. "TYP" IN DIM. TOL. TABLE REFERS TO A NON-CRITICAL TYPICAL (AVERAGE) DIM. WITHOUT NOTES: UNLESS OTHERWISE SPECIFIED, READ FROM BOTTOM UP. CAGE CODE: 5DME2



RECOMMENDED MOUNTING HOLES PATTERN

QTY	CODE IDENT	MFG. P/N	DESCRIPTION	ITEM NO.
			PARTS LIST	
			Coil Winding Specialist, Inc.	
			353 W. GROVE AVE	
			ORANGE, CA 92665	
			High Current Inductor,	
			Rectangular Helical Coil	
			60uH, 400 Amps, Horizontal	
			LCES38A92 - 600M - 400AH	REV A1

UNLESS OTHERWISE SPECIFIED	DRAWN	DATE	TITLE
DIMENSIONING AND TOLERANCE PER ANSI Y14.5M AND [DIMETERS].	TN	03/09/2020	High Current Inductor,
TOLERANCE INCHES: .XXX=±.010 .XX=±.020 TOLERANCE METERS: .XXX=±.254 .XX=±.51	JL	03/09/2020	Rectangular Helical Coil
ANGLE PROJECTION	ENGR	03/09/2020	60uH, 400 Amps, Horizontal
DO NOT SCALE DRAWING	APPR	03/09/2020	LCES38A92 - 600M - 400AH