

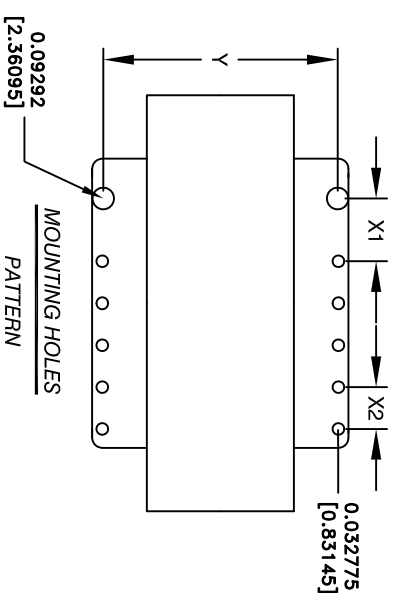
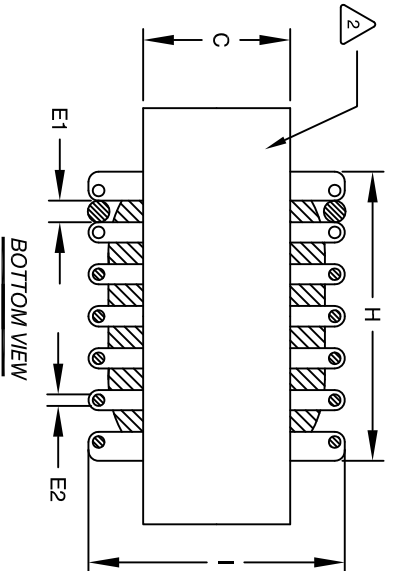
The information contained in this drawing is the sole property of Coil Winding Specialist, Inc. Any reproduction in part or whole without written permission of Coil Winding Specialist, Inc. is prohibited.

DIMENSIONAL TOLERANCES INCHES (MM)

A	B	C	D1	D2	E1	E2	F	G	H	I	X1	X2	Y
MAX	MAX	MAX	MIN	MIN	REF	REF	MAX	MAX	MAX	MAX	REF	REF	REF
2.244 [57.00]	2.244 [57.00]	0.866 [22.00]	0.50 [12.70]	0.25 [6.35]	0.0808 [2.053]	0.0285 [0.723]	1.496 [38.00]	1.65 [42.00]	1.535 [39.00]	1.77 [45.00]	0.293 [7.44]	0.19 [4.84]	1.562 [39.68]

REVISION HISTORY

REV	ECN	DESCRIPTION	BR	DATE	CHK	DATE
A		PRODUCTION RELEASE	JL	5/12/17	JLAU	5/12/17



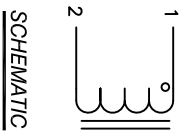
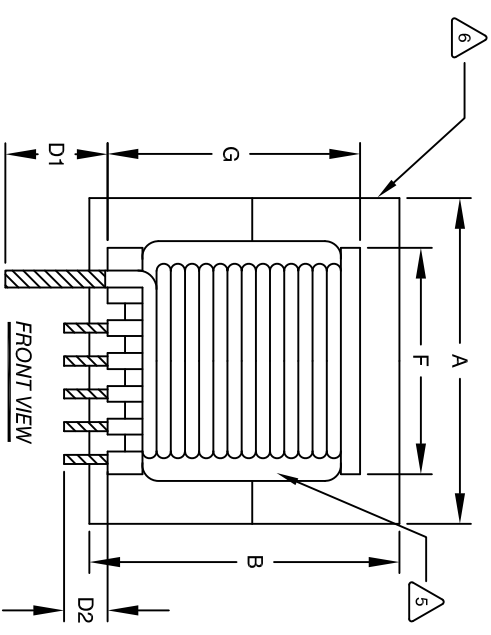
DIMENSIONAL TOLERANCE

	mm	Inch
C1	12.20±1.50	0.48 ± 0.06
C2	11.10±1.00	0.44 ± 0.04
D1	6.0 (TYP)	0.23 (TYP)
D2	0.9 (TYP)	0.04 (TYP)
L	58.0 MAX	2.29 MAX
W	58.0 MAX	2.29 MAX
H	34.0 MAX	1.34 MAX

DC-BIAS L

0A	370uH
5A	343uH
10A	304uH
15A	262uH
20A	222uH
25A	186uH

- 8 APPLICATION: OUTPUT CHOKE, HIGH DC-BIAS INDUCTOR, INPUT FILTER
- 7 BUILT TO ROHS COMPLIANCE AND LEAD FREE.
- 6 MARK PART NUMBER AND REVISION WHERE SHOWN
- 5 VANISH PART AND CURE
APPLY SILICON WHERE SHOWN
- 4 WRAP TAPE AROUND CORES WITH CORES AND NOMEX SPACERS ASSEMBLE PRE FORMED FLAT HELICAL COIL CONSTRUCTION
WEIGHT: 555.0 GRAM (TYP)
RECOMMENDED OPERATING TEMP: -40°C TO 85°C AT 55 °C AMBIENT
HI-POT TEST FOR WINDING TO CORE ISOLATION: 1000VDC @ 2mA, 1 MIN
INTERWINDING CAPACITANCE @ SRF = 80 pF (TYP)
|Z|@SRF =38 KILO-OHM
SRF=1.0 MHz
RATED CURRENT: 25 AMPS
DCR = 25.0 MILLI-OHM MAX., USING GW INSTEK GOM-801H OR EQUAL
L@DC BIAS: SEE TABLE ON RIGHT.
L = 370uH NOM. MEASURED AT 10 KHZ, 0.25V, ZERO DC BIAS SPECIFICATIONS:
- 3 VANISH DOLPH OR EQUAL
SILICON DOW CORNING OR EQUAL
NOMEX SPACERS FOR SIDE AND CENTER LEG OF CORES
OUTER WRAP: 3M GLASS OR EQUAL
WIRE: UL RECOGNIZED 200°C RATED MAGNET WIRE
CORE: COMPACTED POWDERED CORE
- 2 INSULATION CLASS 200°C REQUIRED
MATERIAL: UL RECOGNIZED 94V-0 FOR FLAMMABILITY



NOTES: UNLESS OTHERWISE SPECIFIED, READ FROM BOTTOM UP.
CAGE CODE: 9DME2

UNLESS OTHERWISE SPECIFIED

DIMENSIONING AND TOLERANCE PER ANSI Y14.5M
ALL DIMENSIONS ARE IN INCHES AND [MILLIMETERS]
TOLERANCE INCHES: .XXX±.010 .XX±.020
TOLERANCE METERS: .XXX±.254 .XX±.635
ANGLE PROJECTION
DO NOT SCALE DRAWING

QTY	CODE	IDENT	MFG. P/N	DESCRIPTION	ITEM NO.
PARTS LIST					
AUTOCAD SOLIDWORKS SIGN			DATE		
DRAWN JL			5/12/17		
CHECKED JLAU			5/12/17		
ENGR. JLAU			5/12/17		
APPR. JLAU			5/12/17		
SIZE DWG. NO.		SCALE		REV	
B		NOT_TO_SCALE		A	
High Current Helical Inductor					
370 uH, 25 Amps, Vertical					
LS55286-371M-25AV					
www.coilw.com 353 W. GROVE AVE ORANGE, CA 92665					
COIL WINDING SPECIALIST, INC.					
SHEET 1 OF 1					