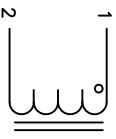


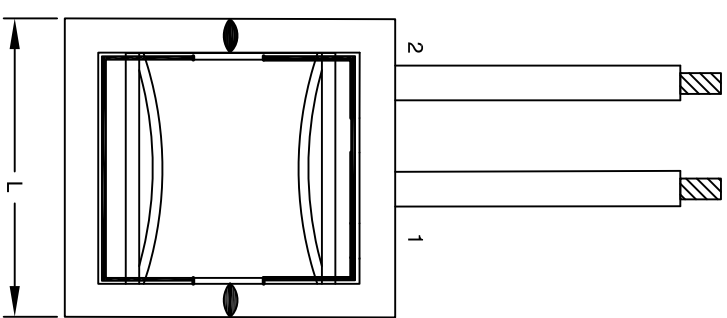
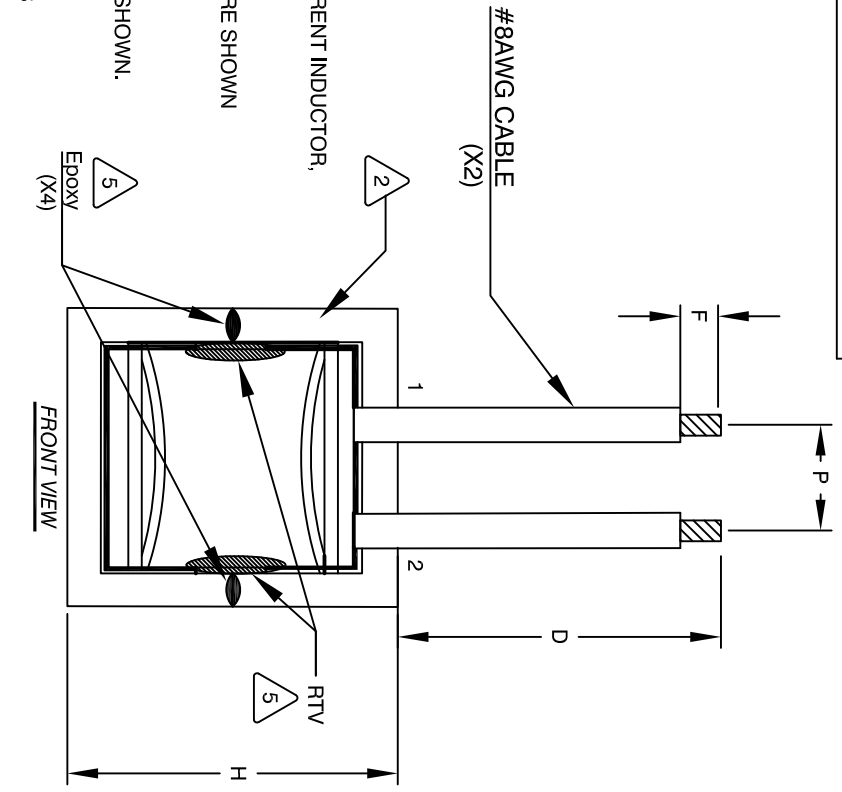
The information contained in this drawing is the sole property of Coil Winding Specialist, Inc. Any reproduction in part or whole without written permission of Coil Winding Specialist, Inc. is prohibited.

REVISION HISTORY

REV	ECN	DESCRIPTION	BY	DATE	CHK	DATE
A		PRODUCTION RELEASE	TN	01/29/2020	JL	01/29/2020



SCHEMATIC



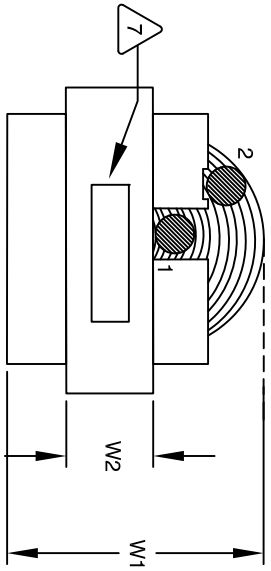
DIMENSIONS AND TOLERANCE

	mm	inch
D	128.25 (TYP)	5.05 (TYP)
F	12.65 (TYP)	0.50 (TYP)
H	78.50 (MAX)	3.10 (MAX)
L	82.30 (MAX)	3.24 (MAX)
W1	66.10 (MAX)	2.60 (MAX)
W2	20.30 (MAX)	0.80 (MAX)
P	25.40 (REF)	1.00 (REF)

DC BIAS TABLE

DC-BIAS AMP	L @ 1KHz (REF)
0	620uH
10	526uH
20	382uH
30	258uH
40	198uH
50	165uH

- 1 INPUT FILTER.
- 2 APPLICATION: OUTPUT CHOKE, HIGH CURRENT INDUCTOR,
- 3 BUILT TO ROHS COMPLIANCE
- 4 LABEL PART NUMBER AND REVISION WHERE SHOWN
- 5 VARNISH PART AND CURE STRIP AND TIN LEAD WIRES
- 6 APPLY EPOXY AND RTV SILICONE WHERE SHOWN.
- 7 WRAP TAPE AROUND CORES WITH CORES AND INSULATION, WIND PRE FORMED FLAT COPPER SHEETS
- 8 CONSTRUCTION:
- 9 WEIGHT: 1022 GRAMS TYP
- 10 RECOMMENDED OPERATING TEMP: -40°C TO 105°C
- 11 HI-POT TEST FROM WINDING TO CORE 1000VDC @ 2mA, 1 MIN
- 12 INTERWINDING CAPACITANCE = 26pF TYP @ SRF
- 13 |Z| = 133 KILO-OHMS TYP @ SRF
- 14 SRF = 1.28MHZ TYP
- 15 RATED CURRENT: 50 AMPS
- 16 DCR = 30 MILLIOHMS MAX.
- 17 INDUCTOR DC BIAS TABLE: SEE TABLE ON THE RIGHT.
- 18 L = 620uH TYP MEASURED @ 1 KHz, 0.25V, ZERO DC BIAS
- 19 SPECIFICATIONS @ 25°C:
- 20 VARNISH
- 21 SILICONE DOW CORNING OR EQUAL
- 22 OUTER WRAP: .3M GLASS TAPE OR EQUAL
- 23 CORE: COMPACTED POWDERED CORE
- 24 MATERIAL: UL RECOGNIZED



TOP VIEW

- 1 INPUT FILTER.
- 2 APPLICATION: OUTPUT CHOKE, HIGH CURRENT INDUCTOR,
- 3 BUILT TO ROHS COMPLIANCE
- 4 LABEL PART NUMBER AND REVISION WHERE SHOWN
- 5 VARNISH PART AND CURE STRIP AND TIN LEAD WIRES
- 6 APPLY EPOXY AND RTV SILICONE WHERE SHOWN.
- 7 WRAP TAPE AROUND CORES WITH CORES AND INSULATION, WIND PRE FORMED FLAT COPPER SHEETS
- 8 CONSTRUCTION:
- 9 WEIGHT: 1022 GRAMS TYP
- 10 RECOMMENDED OPERATING TEMP: -40°C TO 105°C
- 11 HI-POT TEST FROM WINDING TO CORE 1000VDC @ 2mA, 1 MIN
- 12 INTERWINDING CAPACITANCE = 26pF TYP @ SRF
- 13 |Z| = 133 KILO-OHMS TYP @ SRF
- 14 SRF = 1.28MHZ TYP
- 15 RATED CURRENT: 50 AMPS
- 16 DCR = 30 MILLIOHMS MAX.
- 17 INDUCTOR DC BIAS TABLE: SEE TABLE ON THE RIGHT.
- 18 L = 620uH TYP MEASURED @ 1 KHz, 0.25V, ZERO DC BIAS
- 19 SPECIFICATIONS @ 25°C:
- 20 VARNISH
- 21 SILICONE DOW CORNING OR EQUAL
- 22 OUTER WRAP: .3M GLASS TAPE OR EQUAL
- 23 CORE: COMPACTED POWDERED CORE
- 24 MATERIAL: UL RECOGNIZED

NOTES: UNLESS OTHERWISE SPECIFIED READ, FROM BOTTOM UP.
CAGE CODE: 5DMWE2

PARTS LIST

AUTOCAD	SIGN	DATE	TITLE
X			High Current Inductor
SOLIDWORKS			620 uH, 50 Amps
DRWN	TN	01/29/2020	
CHKD	JM	01/29/2020	
ENGR	JL	01/29/2020	
APPR	JL	01/29/2020	

www.coilws.com
Coil Winding Specialist, Inc.
353 W. GROVE AVE
ORANGE, CA 92665

High Current Inductor
620 uH, 50 Amps

SIZE	DWG. NO.	SCALE	SHEET	OF
B	LS80E41-621M-50AV	NOT_TO_SCALE	1	1