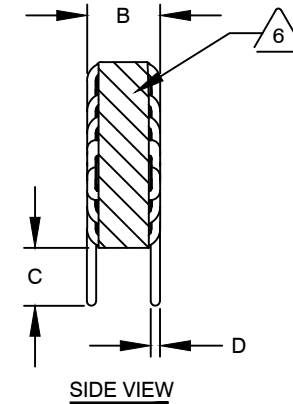
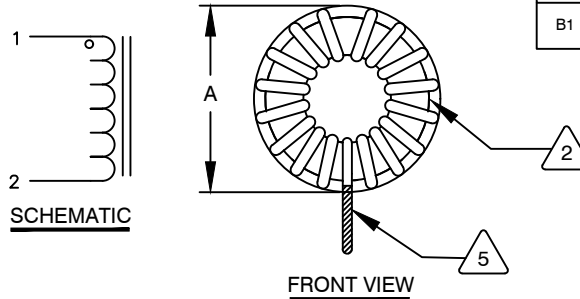
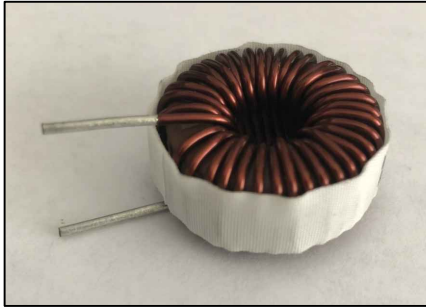


The information contained in this drawing is the sole property of CWS Coil Winding Specialist. Any reproduction in part or whole without written permission of CWS Coil Winding Specialist is prohibited.

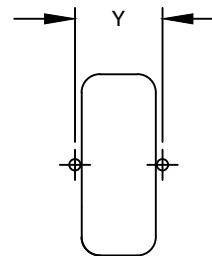
DIMENSIONAL TOLERANCES INCHES [MM]				
A MAX	B MAX	C MIN	D REF	Y REF
1.300 [33.02]	.700 [17.78]	.500 [12.70]	.051 [1.30]	0.600 [15.24]

REVISION HISTORY						
REV	ECN	DESCRIPTION	SIGN & DATE			
			BY	DATE	CHK	DATE
A	-	INITIAL RELEASE	KLC	05/10/2010	AK	05/10/2010
B	-	CHANGE TO 10 AMP & PN	KLC	10/01/2010	AK	10/01/2010
B1	-	UPDATED SPECS.	JZ	08/05/2020	JL	08/05/2020



DC BIAS TABLE

DC BIAS (AMP)	L @ 1.0 KHz
0	126uH
2	125uH
4	123uH
6	118uH
8	109uH
10	100uH



MOUNTING HOLES PATTERN

7 BUILD TO RoHS COMPLIANCE AND LEAD FREE.

USING A PERMANENT MARKING METHOD  
MARK PART NUMBER AND REVISION, IF APPLICABLE,  
WRAP INDUCTOR WITH 3M # 79 OR EQUAL



(I.E. COIL MUST REST FLAT ON PCB). LEADS MUST BE TANGENT TO THE CORE  
REMOVE INSULATION AND TIN LEADS 0.50 INCH, FLUSH WITH THE COIL EDGE, AS SHOWN



4 CONSTRUCTION: WIND COILS EVENLY SPACED AROUND THE CORE

WEIGHT: 47 GRAMS TYPICAL  
INTERWINDING CAPACITANCE = 7.6 pF TYP @ SRF  
SRF = 5.7 MHz TYPICAL  
|Z| = 7.5 KILO-OHMS TYP @ SRF  
RECOMMENDED AMBIENT OPERATING TEMP: -40°C TO 200°C  
HI-POT TEST FOR WINDING TO CORE ISOLATION = 1250 VDC 10 SEC  
CURRENT RATING : 10 AMPS, 40°C TEMP. RISE WITH SOME AIR FLOW  
DCR = 23.0 MILLI-OHMS MAX.

INDUCTOR DC BIAS: SEE TABLE ON THE RIGHT

INDUCTANCE = 100 uH ± 15% @ 0 AMP DC BIAS, 1.0 KHz, 300mV

3 SPECIFICATIONS: @ 25° C

WIRE: UL RECOGNIZED 200°C RATED MAGNET WIRE

CORE: HIGH POWDERED TOROIDAL CORE, CWS BYTEMARK OR OTHER APPROVED PART



1 MATERIAL: UL RECOGNIZED 94V-0 FOR FLAMMABILITY, RATING CLASS H (180°C MIN.) REQUIRED

ANY TOLERANCE. THIS DIM. CAN VARY A LITTLE FROM PART TO PART.

"TYP" IN DIM. TOL. REFERS TO A NON-CRITICAL TYPICAL (AVERAGE) DIM. WITHOUT

NOTES: UNLESS OTHERWISE STATED, READ NOTES FROM BOTTOM UP.

CAGE CODE: 5DME2

UNLESS OTHERWISE SPECIFIED	
DIMENSIONING AND TOLERANCE PER ANSI Y14.5M	
ALL DIMENSIONS ARE IN INCHES AND [MILLIMETERS].	
TOLERANCE INCHES: .XXX=±.005 .XX=±.015 <math>\angle=±0°30'</math>	
TOLERANCE METRICS: .XXX=±.127 .XX=±.38 <math>\angle=±0°30'</math>	
ANGLE PROJECTION	
DO NOT SCALE DRAWING	

CODE IDENT	MFG. P/N	DESCRIPTION	ITEM NO.
<b>PARTS LIST</b>			
AUTOCAD	X	<b>COILWS COM, INC</b> www.coilws.com	CWS Coil Winding Specialist. 353 WEST GROVE ORANGE, CA 92865
SOLIDWORKS			
SIGN	DATE	TITLE: TOROIDAL POWER INDUCTOR 100 uH, 10 Amps, Vertical	
DRAWN	KLC 05/10/2010		
CHECKED	AK 05/10/2010		
ENGR.	KLC 05/10/2010		
APPR.	KLC 05/10/2010	SIZE DWG. NO.	REV
		B MF270-101M-10AV	B1
		SCALE	SHEET 1 OF 1
		2=1	