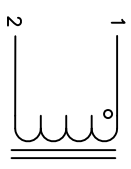


The information contained in this drawing is the sole property of CMS Coil Winding Specialist. Any reproduction in part or whole without written permission of CMS Coil Winding Specialist is prohibited.



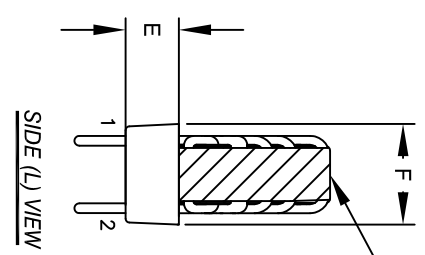
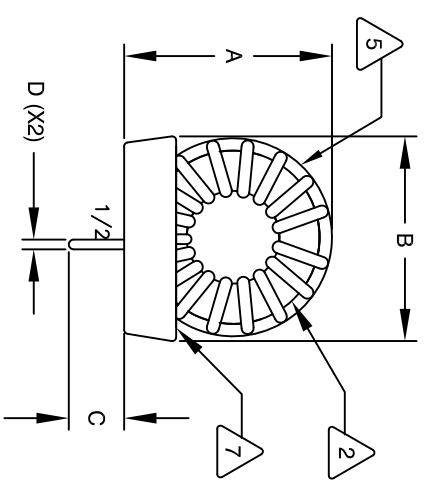
SCHEMATIC

- 8 BUILD TO ROHS COMPLIANCE AND LEAD FREE
- 7 ENCAPSULATE WOUND INDUCTOR WITH MACROCAST
- 6 MARK PART NUMBER, REVISION AND DATE CODE
- 5 WRAP INDUCTOR WITH GLASS TAPE
- 4 CONSTRUCTION:

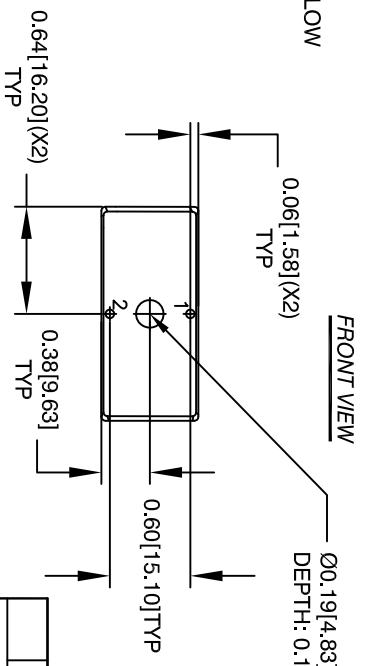
- WEIGHT = 52 GRAMS
  - OPERATING TEMP RANGE = -25°C TO 120°C
  - MAXIMUM TEMPERATURE RISE = 40°C WITH SOME AIRFLOW
  - SRF = GREATER THAN 10MHZ
  - LS @ DC BIAS: SEE TABLE ON THE RIGHT
  - CURRENT RATING = 16 AMPS
  - DCR = 10.0 MILLI-OHMS MAX
  - INDUCTANCE = 33 uH±15% @ 1 KHz, 250mV
  - SPECIFICATIONS @ 25°C
- MACROCAST P/N CR 6127 B2 WHITE. UL94V-0
  - WIRE: CLASS 200°C RATED
  - CORE: POWDERED TOROIDAL CORE
  - RATING CLASS H (180°C MINIMUM) REQUIRED
  - MATERIAL: UL RECOGNIZED FOR FLAMMABILITY

ANY TOLERANCE. THIS DIM. CAN VARY A LITTLE FROM PART TO PART.  
 "TYP" IN DIM. TABL. TABLE REFERS TO A NON-CRITICAL TYPICAL (AVERAGE) DIM. WITHOUT  
 NOTES: UNLESS OTHERWISE SPECIFIED, READ FROM BOTTOM UP.  
 CAGE CODE: 5DME2

DIMENSIONAL TOLERANCES INCHES (MM)						
A	B	C	D	E	F	P
TYP	TYP	MIN	REF	TYP	TYP	REF
1.40 [35.50]	1.30 [33.10]	0.30 [8.00]	0.06 [1.60]	0.43 [11.00]	0.76 [19.25]	0.06 [1.510]



DC BIAS (AMP)	LS@1KHz (REF)
0	33 uH
5	33 uH
10	31 uH
15	30 uH
16	29 uH



FRONT VIEW

MOUNTING HOLES PATTERN		
CODE IDENT	MFG. P/N	DESCRIPTION
PARTS LIST		
TITLE: Toroidal Power Chokes, 33uH		
PN: 06002-552/0001		
COWS Coil Winding Specialist 353 W. Grove Avenue Orange, CA 92865		

DIMENSIONING AND TOLERANCE PER ANSI Y14.5M AND (MILLIMETERS)	
TOLERANCE INCHES:	∅ = ±0.30'
XXX±.005 XX±.015	∅ = ±0.30'
TOLERANCE METRICS:	∅ = ±0.30'
XXX±.127 XX±.38	∅ = ±0.30'
ANGLE PROJECTION	
DO NOT SCALE DRAWING	

UNLESS OTHERWISE SPECIFIED	
DRAWN	TN 11/23/2020
CHKD	JL 11/23/2020
ENGR	JL 11/23/2020
APPR	JL 11/23/2020
AUTOCAD SOLIDWORKS	X
SIZE	DWG. NO. MF270-330M-16AV-P
SCALE	NOT TO SCALE
SHEET	1 OF 1

REVISION HISTORY		SIGN & DATE	
REV	ECN	BR	DATE
A		TN	11/23/2020
A1		JL	11/23/2020
DESCRIPTION		CHK	DATE
PRE-PRODUCTION RELEASE		JL	11/23/2020
UPDATED DIM. TOLERANCES & CORRECTED CUSTOMER P/N		TN	01/15/2020
		JL	01/15/2020