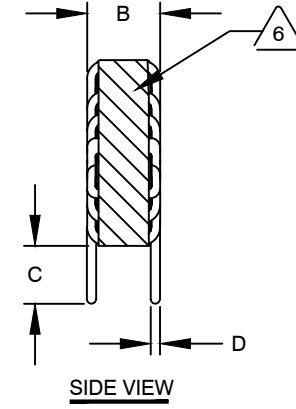
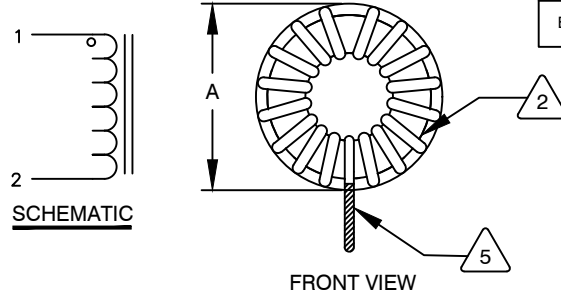
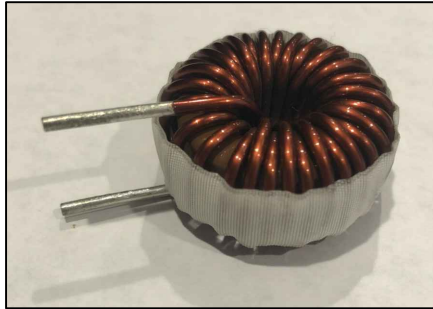


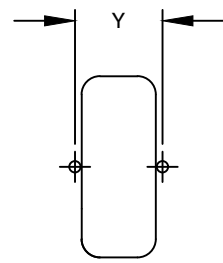
The information contained in this drawing is the sole property of CWS Coil Winding Specialist.
Any reproduction in part or whole without written permission of CWS Coil Winding Specialist is prohibited.

DIMENSIONAL TOLERANCES INCHES [MM]				
A MAX	B MAX	C MIN	D REF	Y REF
1.375 [34.92]	.787 [20.00]	.500 [12.70]	.072 [1.83]	0.600 [15.24]

REVISION HISTORY						
REV	ECN	DESCRIPTION	SIGN & DATE			
			BY	DATE	CHK	DATE
A	-	INITIAL RELEASE	GN	08/03/2011	JL	08/03/2011
B	140721	DCR CHANGED	AK	07/21/2014	BO	07/21/2014
B1	-	UPDATED SPECS.	JZ	08/01/2020	JL	08/01/2020



DC BIAS (AMP)	L @ 1.0 KHz
0	65.3uH
5	64.9uH
10	60.7uH
15	54.6uH
20	49.8uH



MOUNTING HOLES PATTERN

UNLESS OTHERWISE SPECIFIED
 DIMENSIONING AND TOLERANCE PER ANSI Y14.5M
 ALL DIMENSIONS ARE IN INCHES AND [MILLIMETERS].
 TOLERANCE INCHES:
 .XXX=±.005 .XX=±.015 $\angle=±0°30'$
 TOLERANCE METRICS:
 .XXX=±.127 .XX=±.38 $\angle=±0°30'$
 ANGLE PROJECTION
 DO NOT SCALE DRAWING

CODE IDENT	MFG. P/N	DESCRIPTION	ITEM NO.
PARTS LIST			
AUTOCAD	X		
SOLIDWORKS			
SIGN	DATE	COILWS COM, INC CWS Coil Winding Specialist. www.coilws.com 353 WEST GROVE ORANGE, CA 92865	
DRAWN	GN 08/03/2011	TITLE: TOROIDAL POWER INDUCTOR 70 uH, 20 Amps, Vertical	
CHECKED	JLAU 08/03/2011		
ENGR.	JLAU 08/03/2011		
APPR.	JLAU 08/03/2011	SIZE DWG. NO. B MF270-700M-20AV	REV B1
SCALE		2=1	SHEET 1 OF 1

- 7 BUILD TO RoHS COMPLIANCE AND LEAD FREE.
 USING A PERMANENT MARKING METHOD
 MARK PART NUMBER AND REVISION, IF APPLICABLE.
 6 WRAP INDUCTOR WITH 3M # 79 OR EQUAL
 (I.E. COIL MUST REST FLAT ON PCB). LEADS MUST BE TANGENT TO THE CORE
 5 REMOVE INSULATION AND TIN LEADS 0.50 INCH, FLUSH WITH THE COIL EDGE, AS SHOWN
 4 CONSTRUCTION: WIND COILS EVENLY SPACED AROUND THE CORE
 WEIGHT: 58 GRAMS TYPICAL
 INTERWINDING CAPACITANCE = 22.8 pF TYP @ SRF
 SRF = 4.35 MHz TYPICAL
 |Z| = 4.8 KILO-OHMS TYP @ SRF
 RECOMMENDED AMBIENT OPERATING TEMP: -40°C TO 200°C
 HI-POT TEST FOR WINDING TO CORE ISOLATION = 1250 VDC 10 SEC
 CURRENT RATING : 20 AMPS, 40°C TEMP. RISE WITH SOME AIR FLOW
 DCR = 11.0 MILLI-OHMS MAX.
 INDUCTOR DC BIAS: SEE TABLE ON THE RIGHT
 INDUCTANCE = 70 uH±15% @ 0 AMP DC BIAS, 1.0 KHz, 300mV
 3 SPECIFICATIONS: @ 25° C
 2 WIRE: UL RECOGNIZED 200°C RATED MAGNET WIRE
 CORE: HIGH POWDERED TOROIDAL CORE, CWS BYTEMARK OR OTHER APPROVED PART
 1 MATERIAL: UL RECOGNIZED 94V-0 FOR FLAMMABILITY, RATING CLASS F (155°C MIN.) REQUIRED
 ANY TOLERANCE. THIS DIM. CAN VARY A LITTLE FROM PART TO PART.
 "TYP" IN DIM. TOL. REFERS TO A NON-CRITICAL TYPICAL (AVERAGE) DIM. WITHOUT
 NOTES: UNLESS OTHERWISE STATED, READ NOTES FROM BOTTOM UP.
 CAGE CODE: 5DME2