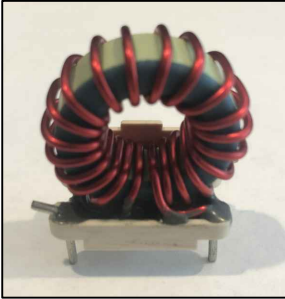
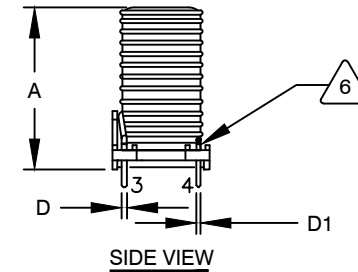
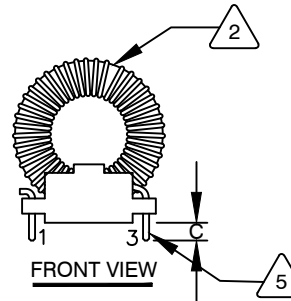
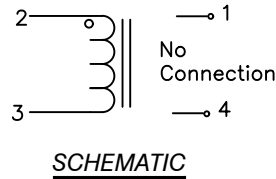


The information contained in this drawing is the sole property of CWS Coil Winding Specialist.
Any reproduction in part or whole without written permission of CWS Coil Winding Specialist is prohibited.



DIMENSIONAL TOLERANCES INCHES [MM]							
A MAX	B MAX	B1 MAX	C MIN	D REF	D1 REF	X REF	Y REF
1.24 [31.50]	1.00 [25.40]	0.60 [15.24]	0.21 [5.30]	0.05 [1.29]	0.05 [1.29]	0.80 [20.32]	0.40 [10.16]

REVISION HISTORY						
REV	ECN	DESCRIPTION	SIGN & DATE			
			BY	DATE	CHK	DATE
A	-	INITIAL RELEASE	RLU	02/11/2005	JLAU	02/11/2005
A1	-	UPDATED SPECS.	JZ	03/28/2021	JL	03/28/2021



DC BIAS TABLE

DC BIAS (AMP)	L @ 1.0 KHz
0.0	24.70uH
1.0	23.08uH
3.0	22.71uH
5.0	20.50uH
5.5	19.97uH

- 7 BUILD TO RoHS COMPLIANCE AND LEAD FREE.
USING A PERMANENT MARKING METHOD
MARK PART NUMBER AND REVISION, IF APPLICABLE.
EPOXY COIL TO HEADER

- 5 REMOVE INSULATION AND TIN LEADS 0.21 INCH, FLUSH WITH THE HEADER EDGE, AS SHOWN

- 4 CONSTRUCTION: WIND COILS EVENLY SPACED AROUND THE CORE

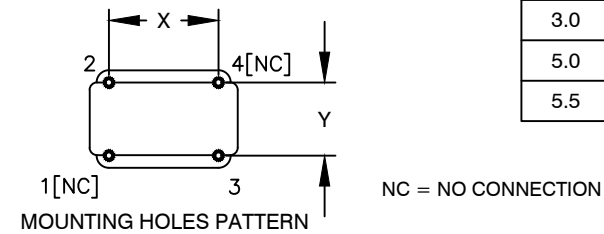
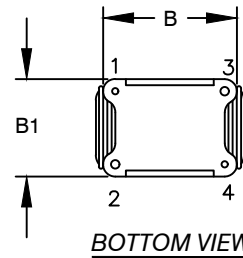
WEIGHT: 25 GRAMS TYPICAL
INTERWINDING CAPACITANCE = 52.17 pF TYP @ SRF
SRF = 10 MHz TYPICAL
|Z| = 1.29 KILO-OHMS TYP @ SRF
RECOMMENDED AMBIENT OPERATING TEMP: -40°C TO 130°C
HI-POT TEST FOR WINDING TO CORE ISOLATION = 500 VDC 10 SEC
CURRENT RATING : 5.1 AMPS, 40°C TEMP. RISE WITH SOME AIR FLOW
DCR = 9.90 MILLI-OHMS MAX.
INDUCTOR DC BIAS: SEE TABLE ON THE RIGHT
INDUCTANCE = 26 uH ± 15% @ 0 AMP DC BIAS, 1.0 KHz, 300mV

- 3 SPECIFICATIONS: @ 25° C

- 2 WIRE: UL RECOGNIZED 200°C RATED MAGNET WIRE
CORE: HIGH POWDERED TOROIDAL CORE, CWS BYTEMARK OR OTHER APPROVED PART

- 1 MATERIAL: UL RECOGNIZED 94V-0 FOR FLAMMABILITY, RATING CLASS F (180°C MIN.) REQUIRED

ANY TOLERANCE. THIS DIM. CAN VARY A LITTLE FROM PART TO PART.
"TYP" IN DIM. TOL. REFERS TO A NON-CRITICAL TYPICAL (AVERAGE) DIM. WITHOUT
NOTES: UNLESS OTHERWISE STATED, READ NOTES FROM BOTTOM UP.
CAGE CODE: 5DME2



UNLESS OTHERWISE SPECIFIED
DIMENSIONING AND TOLERANCE PER ANSI Y14.5M
ALL DIMENSIONS ARE IN INCHES AND [MILLIMETERS].
TOLERANCE INCHES:
.XXX±.005 .XX±.015 $\angle = \pm 0^{\circ}30'$
TOLERANCE METRICS:
.XXX±.127 .XX±.38 $\angle = \pm 0^{\circ}30'$
ANGLE PROJECTION
DO NOT SCALE DRAWING

CODE IDENT	MFG. P/N	DESCRIPTION	ITEM NO.
PARTS LIST			
AUTOCAD	X		
SOLIDWORKS			
SIGN	DATE	COILWS COM, INC	CWS Coil Winding Specialist.
DRAWN	RLU 02/11/2005	www.coilws.com	353 WEST GROVE ORANGE, CA 92865
CHECKED	JLAU 02/11/2005	TITLE: OUTPUT CHOKE 26 uH, 5.1 Amps, Horizontal	
ENGR.	JLAU 02/11/2005		
APPR.	KKSUM 02/11/2005		
SIZE	DWG. NO.	OPC-1-26-5.1	REV A1
SCALE	2=1	SHEET 1 OF 1	