

The information contained in this drawing is the sole property of CWS Coil Winding Specialist. Any reproduction in part or whole without written permission of CWS Coil Winding Specialist is prohibited.

DIMENSIONAL TOLERANCES INCHES [MM]								
A MAX	B MAX	C MIN	D REF			X REF	Y1 REF	Y2 REF
1.82 [46.14]	0.846 [21.50]	0.75 [19.05]	0.0641 [1.628]			1.063 [27.00]	0.795 [20.20]	0.52 [13.10]

REVISION HISTORY						
REV	ECN	DESCRIPTION	SIGN & DATE			
			BY	DATE	CHK	DATE
A		PRODUCTION RELEASE	JL	05/19/17	JLAU	05/19/17
A1		REVISED TOLERANCE ON DIM A	TN	10/19/18	JL	10/19/18

8 BUILD TO RoHS COMPLIANCE AND LEAD FREE

7 WHERE SHOWN, USING A PERMANENT MARKING METHOD MARK PART NUMBER AND REVISION WRAP INDUCTOR WITH GLASS TAPE

6 TO THE CORE MUST REST FLAT ON PCB). LEADS MUST BE TANGENT FLUSH WITH THE CORE EDGE, AS SHOWN (I.E. COIL REMOVE INSULATION AND TIN LEADS APPROX. 0.75 INCH

5 SPACER : UL 94-V0, FR4

4 WIND BOTH COILS EVENLY SPACED CONSTRUCTION:

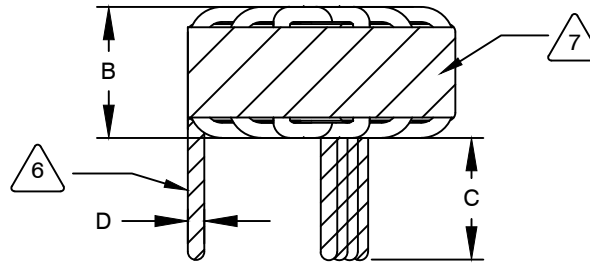
INTER-WINDING CAPACITANCE @ SRF = 145 pF
 LEAKAGE INDUCTANCE = 2 uH
 CURRENT RATING = 60 AMPS
 DCR ON EACH WINDING = 0.5 MILLI-OHMS MAX
 $|z|$ @ SRF = 400 Ω
 SRF ~ 825 kHz

3 L= 160 uH \pm 30%, 1 KHz, 250 mV SPECIFICATIONS:

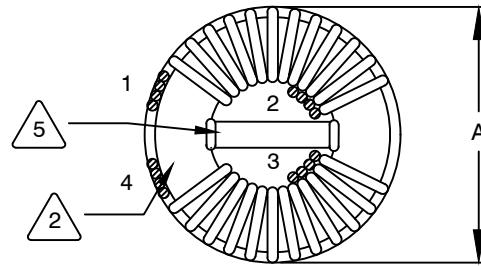
2 WIRE: UL RECOGNIZED 155 °C OR 200 °C (PREFERRED) RATED MAGNET WIRE CWS BYTEMARK OR OTHER APPROVED PART CORE: COATED FERRITE TOROID, HIGH PERM MNZN

1 RATING CLASS N (200 °C MIN.) REQUIRED MATERIAL: UL RECOGNIZED 94V-0 FOR FLAMMABILITY

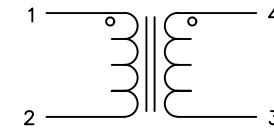
NOTES: UNLESS OTHERWISE SPECIFIED. COMMON MODE CHOKE



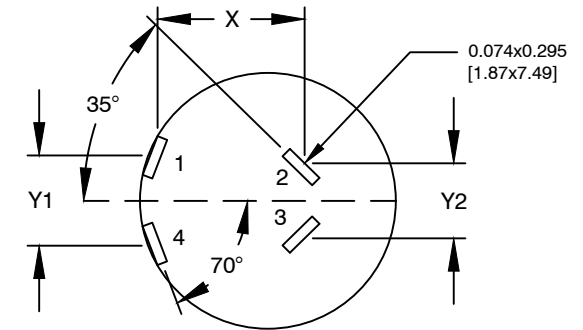
FRONT VIEW



BOTTOM VIEW



SCHMATIC



MOUNTING HOLES PATTERN

CODE IDENT	MFG. P/N	DESCRIPTION	ITEM NO.
PARTS LIST			
AUTOCAD	X	COILWS COM, INC www.coilws.com	CWS Coil Winding Specialist. 353 W. Grove Ave. Orange, CA 92865
SOLIDWORKS			
SIGN	DATE	TITLE: High Current Common Mode Choke SIZE B DWG. NO. CM-161U-60A REV A1 SCALE NOT_TO_SCALE SHEET 1 OF 1	
DRAWN	JL 05/19/17		
CHECKED	JLAU 05/19/17		
ENGR.	KSUM 05/19/17		
APPR.	JLAU 05/19/17		

UNLESS OTHERWISE SPECIFIED	
DIMENSIONING AND TOLERANCE PER ANSI Y14.5M	
ALL DIMENSIONS ARE IN INCHES AND [MILLIMETERS].	
TOLERANCE INCHES: .XXX=±.005 .XX=±.015 \angle =±0°30' TOLERANCE METRICS: .XXX=±.127 .XX=±.38 \angle =±0°30'	
ANGLE PROJECTION	
DO NOT SCALE DRAWING	