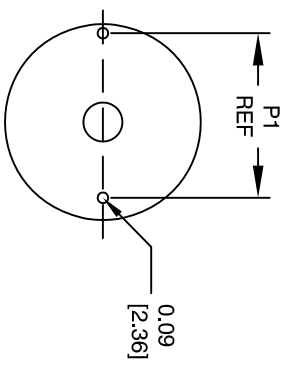
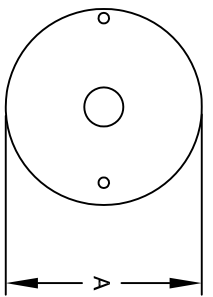
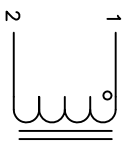
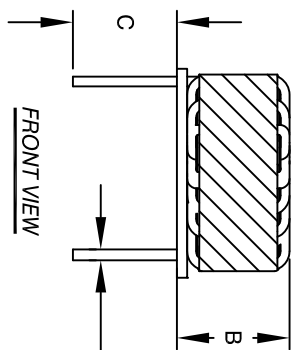


The information contained in this drawing is the sole property of CWS Coil Winding Specialist. Any reproduction in part or whole without written permission of CWS Coil Winding Specialist is prohibited.

DIMENSIONAL TOLERANCES INCHES [MM]					
A	B	C	D		P1
MAX	MAX	MIN	REF		REF
1.97 [50.00]	1.04 [26.50]	0.75 [19.05]	0.08 [2.05]		1.65 [42.00]

REVISION HISTORY			SIGN & DATE			
REV	ECN	DESCRIPTION	BY	DATE	CHK	DATE
A		PRODUCTION RELEASE	JL	06/29/17	AM	06/29/17
B		UPDATED DIMENSIONAL TOLERANCES	TN	01/08/2020	JL	01/08/2020



- BUILT TO ROHS COMPLIANCE.
- IF APPLICABLE, LABEL PART NUMBER AND REVISION
- POSITION LEADS AS REQUIRED
REMOVE WIRE INSULATION AND TIN
WIND COILS EVENLY SPACED
CONSTRUCTION:
- WEIGHT: ~230 GRAMS
- HI-POT WINDING-TO-CORE 1250 V AC, 10 SEC
INTERWINDING CAPACITANCE = 73pF
|Z| @ SRF = 12.3 KΩ
DCR = 110mΩ MAX
SRF ~ 930 KHz
MAX TEMP. RISE @ IDC 25 AMP, LESS THAN 50°C WITH NO AIRFLOW
DC BIASED = 25 AMPS, INDUCTANCE = 75 uH
DC BIASED = 15 AMPS, INDUCTANCE = 193 uH
INDUCTANCE @ 0 AMP = 400 uH±15% (LESS THAN 10% RIPPLE)
TEST FREQUENCY: 1.0 KHz ; TEST VOLTAGE: 250mV
RATED MAX. CURRENT = 25 AMPS RMS ; FREQUENCY: 1KHz
OPERATING TEMPERATURE RANGE: -40° TO 180°C
SPECIFICATIONS @ 25°C
- WIRE: UL RATED CLASS 200°C
CORE: HIGH TEMP POWDERED CORE
- RATING UL-CLASS H (180°C) REQUIRED
MATERIAL: UL RECOGNIZED FLAMMABILITY

NOTES: UNLESS OTHERWISE SPECIFIED, READ NOTES FROM BOTTOM TO UP.

CODE	IDENT	MFG. P/N	DESCRIPTION	ITEM NO.
PARTS LIST				
AUTOCAD	SIGN	DATE	TITLE:	
SOLIDWORKS	JL	06/29/17	COILWS COM, INC	
	AM	06/29/17	353 W Grove Ave	
	ENGR	06/29/17	Orange, CA 92865	
	APPR	06/29/17	CWS Coil Winding Specialist.	
	KLC		Toroidal Power Inductor	
	KLC		400 uH, 25 Amp	
			CWS-1HF-12454	REV B