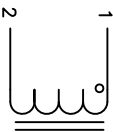
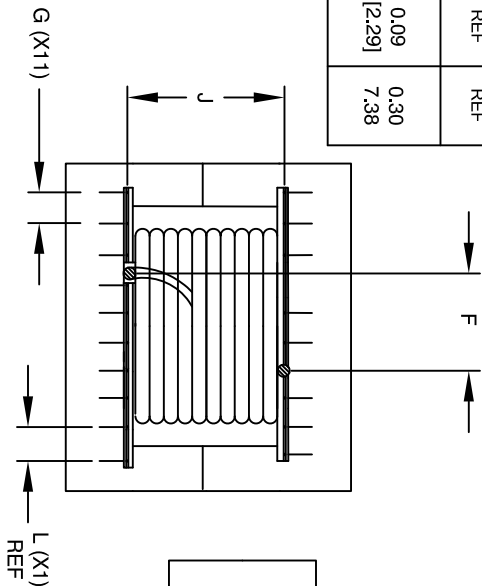


The information contained in this drawing is the sole property of Coil Winding Specialist, Inc. Any reproduction in part or whole without written permission of Coil Winding Specialist, Inc. is prohibited.

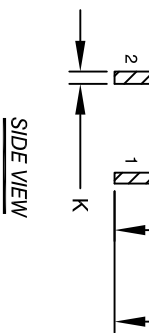
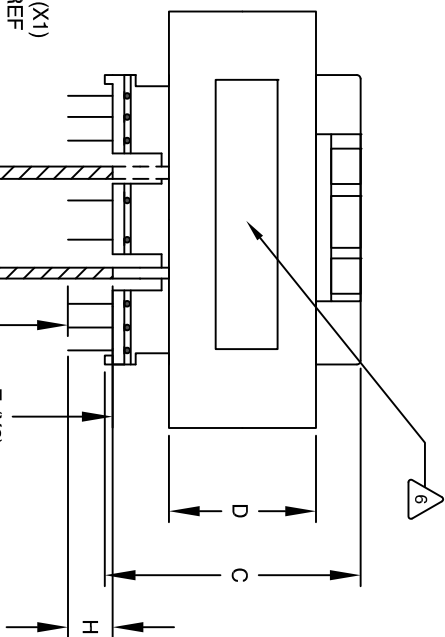
DIMENSIONAL TOLERANCES INCHES (MM)											
A	B	C	D	E (X2)	F	G (X11)	H	I	J	K	L (X1)
MAX	MAX	REF	REF	MIN	REF	REF	MAX	REF	REF	REF	REF
2.64 [67.00]	2.70 [68.00]	2.30 [58.35]	1.07 [27.18]	0.85 [21.59]	0.67 [17.02]	0.20 [5.00]	0.26 [6.60]	0.71 [18.00]	1.80 [45.72]	0.09 [2.29]	0.30 7.38



SCHEMATIC



BOTTOM VIEW



SIDE VIEW

- 8 APPLICATION: OUTPUT CHOKE; HIGH DC-BIAS INDUCTOR, INPUT FILTER
- 7 BUILT TO ROHS COMPLIANCE
- 6 LABEL PART NUMBER, REVISION AND DATE CODE
- 5 VANISH PART AND CURE
APPLY SILICON WHERE SHOWN
- 4 WRAP TAPE AROUND CORES
CONSTRUCTION:

WEIGHT: 816 GRAM (TYP)
 HI-POT TEST FOR WINDING TO CORE ISOLATION: 1000VDC @ 2mA, 1 MIN
 INTERWINDING CAPACITANCE @ SRF = 116pF (TYP)
 |Z|@SRF = 33 KILO-OHMS (TYP)
 SRF = 800 KHZ (TYP)
 INDUCTOR RATED CURRENT: 35 AMPS
 DCR = 29 MILLI-OHMS TYP.
 INDUCTOR DC BIAS: SEE TABLE ON THE RIGHT
 INDUCTOR AMBIENT OPERATING TEMP: -40°C to 105°C
 L = 350µH ±15% @1 KHZ, 0.25V, ZERO DC BIAS
 SPECIFICATIONS:

- 3 OUTER WRAP: 3M GLASS TAPE OR EQUAL
WIRE: UL RECOGNIZED 200°C RATED MAGNET WIRE
CORE: SENDUST ECORE
- 2 INSULATION CLASS K REQUIRED
- 1 MATERIAL: UL RECOGNIZED 94V-0 FOR FLAMMABILITY

NOTES: UNLESS OTHERWISE SPECIFIED, READ FROM BOTTOM UP.
 CAGE CODE: 5DME2

REVISION HISTORY				SIGN & DATE		
REV	ECN	DESCRIPTION	BR	DATE	CHK	DATE
A		PRODUCTION RELEASE	TN	12/11/17	JL	12/11/17
A1		REVISED MECH. SPEC.	TN	04/08/18	JL	04/08/18
B		UPDATED NEW BOBBIN DIM	TN	04/22/2020	JL	04/22/2020

DC-BIAS (Amp)	Inductance (µH)
0A	350
5A	344
10A	342
15A	336
20A	328
25A	323
30A	314
35A	304

QTY	CODE IDENT	MFG. P/N	DESCRIPTION	ITEM NO.
			PARTS LIST	

AUTOCAD SOLIDWORKS		DATE		TITLE:	
SIGN				High Current Inductor	
DRAWN	TN	12/11/17		350 uH, 35 Amps, Horizontal	
CHKD	JL	12/11/17			
ENGR.	JL	12/11/17			
APPR.	JL	12/11/17			

DIMENSIONING AND TOLERANCE PER ANSI Y14.5M AND (DIMETERS).	
TOLERANCE INCHES:	∅ = ±0.30°
.XXX-±.010 .XX-±.020	TOLERANCE METRICS:
.XXX-±.254 .XX-±.51	∅ = ±0.30°
ANGLE PROJECTION	∅
DO NOT SCALE DRAWING	

UNLESS OTHERWISE SPECIFIED
SCALE

SIZE	DWG. NO.	REV
B	LS6533A-351M-35A	B
SCALE	NOT TO SCALE	SHEET 1 OF 1