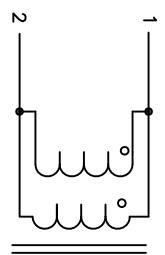
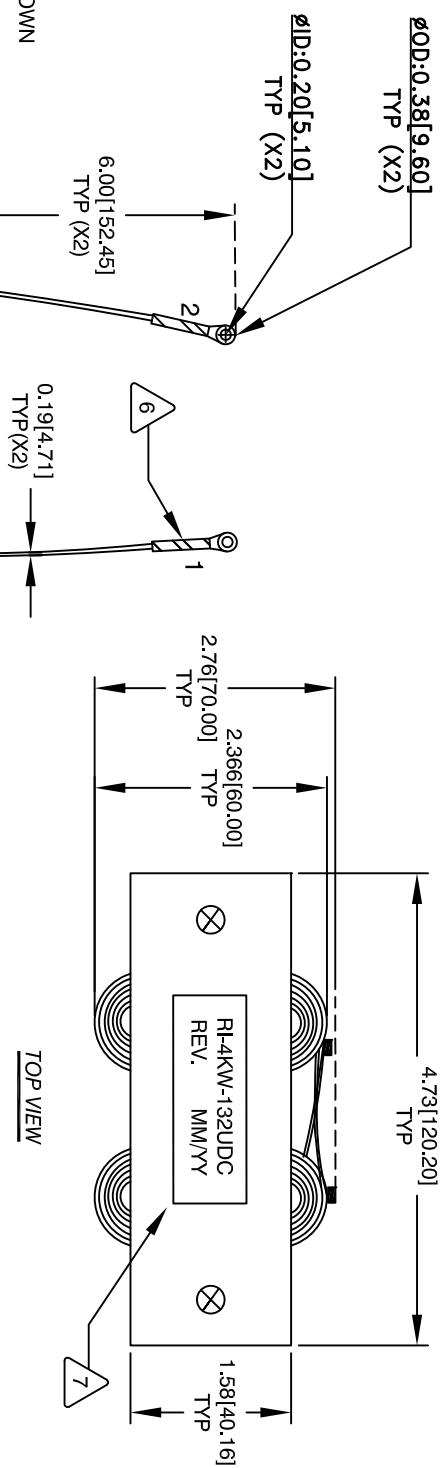


The information contained in this drawing is the sole property of Coil Winding Specialist, Inc. Any reproduction in part or whole without written permission of Coil Winding Specialist, Inc. is prohibited.

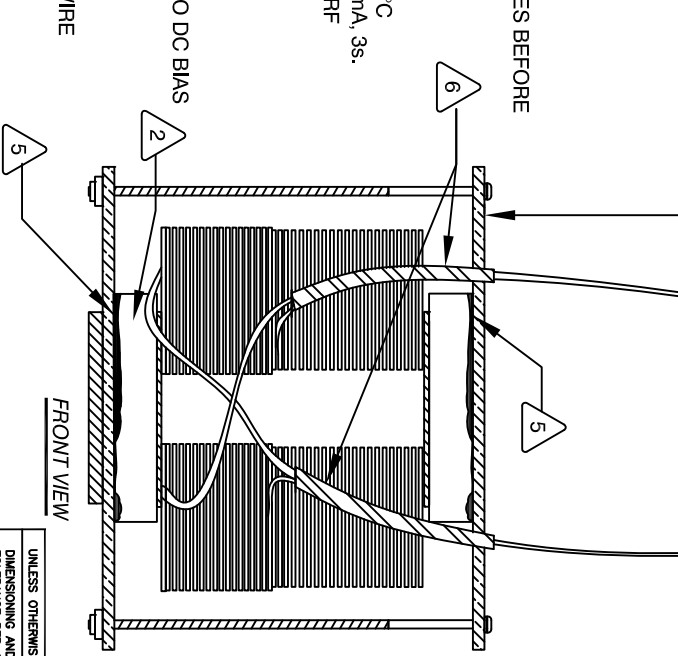
| REVISION HISTORY | | SIGN & DATE | | | |
|------------------|-----|-------------|------------|-----|------------|
| REV | ECN | BY | DATE | CHK | DATE |
| A | | TN | 01/20/2020 | JL | 01/20/2020 |



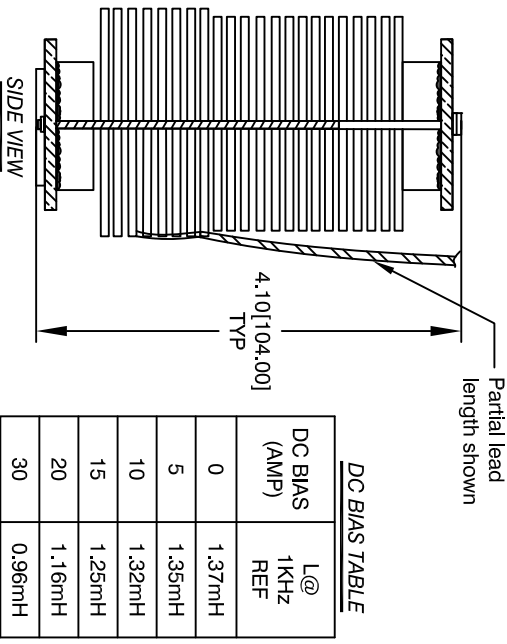
SCHEMATIC



TOP VIEW



FRONT VIEW



SIDE VIEW

| DC BIAS (AMP) | L @ 1KHz (REF) |
|---------------|----------------|
| 0 | 1.37mH |
| 5 | 1.35mH |
| 10 | 1.32mH |
| 15 | 1.25mH |
| 20 | 1.16mH |
| 30 | 0.96mH |

- 1 BUILT TO ROHS COMPLIANCE AND LEAD FREE.
- 2 MARK PART NUMBER AND REVISION WHERE SHOWN
- 3 COVER JOINTS WITH HEATSHRINK TUBING (X4)
- 4 APPLY SILICONE WHERE SHOWN
- 5 INSTALLING BOLTS TO HOLD ASSEMBLY, APPLY SILICONE ON TOP AND BOTTOM OF CORES BEFORE WIND COILS TO CORES CONSTRUCTION
- 6 WEIGHT: 1814 GRAMS TYP
MAX REACTOR TEMP RATING: 200°C
RECOMMENDED OPERATING TEMP: -40°C TO 85°C
HIPOT TESTING WINDING TO CORE: 1000VDC, 2mA, 3s.
INTERWINDING CAPACITANCE = 340pF TYP @ SRF
|Z| = 38 KILO-OHMS TYP @ SRF
SRF = 234kHz TYP
RATED CURRENT: 30 AMPS DC
DCR = 30 MILLI-OHMS MAX.
REACTOR DC BIAS: SEE TABLE ON THE RIGHT
L = 1.3mH TYP, MEASURED AT 1 KHz, 0.25V, ZERO DC BIAS SPECIFICATIONS @ 25°C.
- 7 SILICONE DOW CORNING OR EQUAL
FR4 SPACER TEMPERATURE RATING: 125°C TYP
WIRE: UL RECOGNIZED 200°C RATED MAGNET WIRE
CORE: COMPACT POWDERED CORE

INSULATION CLASS K (200°C) REQUIRED MATERIAL: UL RECOGNIZED 94V-0 FOR FLAMMABILITY

NOTES: UNLESS OTHERWISE SPECIFIED, READ FROM BOTTOM UP.

CAGE CODE: 5DME2

UNLESS OTHERWISE SPECIFIED
DIMENSIONING AND TOLERANCE PER ANSI Y14.5M
ALL DIMENSIONS ARE IN INCHES AND [MILLIMETERS].
TOLERANCE INCHES: $\phi = \pm 0.30$
$XX = \pm 0.10$, $XX = \pm 0.20$
TOLERANCE METRICS: $\phi = \pm 0.31$
$XX = \pm 0.254$, $XX = \pm 0.51$
ANGLE PROJECTION
DO NOT SCALE DRAWING

| QTY | CODE | IDENT | MFG. P/N | DESCRIPTION | ITEM NO. |
|-------------------|------------|------------|-------------------|---------------|----------|
| PARTS LIST | | | | | |
| | AUTOCAD | | X | | |
| | SOLIDWORKS | | | | |
| | SIGN | | DATE | | |
| DRWN | TN | 01/20/2020 | TITLE: DC REACTOR | | |
| ENGR | JL | 01/20/2020 | 1.3mH, 30 Amps | | |
| APPR | JL | 01/20/2020 | SIZE | DWG. NO. | REV |
| | | | B | RI-4KW-132UDC | A |

www.coilws.com
353 W. GROVE AVE
ORANGE, CA 92665

Coil Winding Specialist, Inc.
Coil Winding Specialist, Inc.
Coil Winding Specialist, Inc.

SCALE: NOT TO SCALE SHEET 1 OF 1