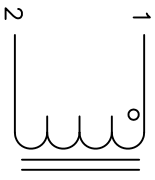


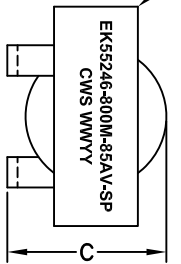
The information contained in this drawing is the sole property of Coil Winding Specialist, Inc. Any reproduction in part or whole without written permission of Coil Winding Specialist, Inc. is prohibited.

DIMENSIONAL TOLERANCE									
A	B	C	D (LEAD)	E (LEAD DIM)	F (LEAD DIM)	H (THINNED)	Y	X	
MAX	MAX	MAX	TYP	TYP	TYP	TYP	TYP	REF	REF
2.28 [±] [58.00]	2.32 [±] [59.00]	1.65 [±] [42.00]	0.56 [±] [14.19]	0.15 [±] [3.81]	0.063 [±] [1.60]	0.50 [±] [12.75]	0.725 [±] [18.42]	1.14 [±] [29.00]	

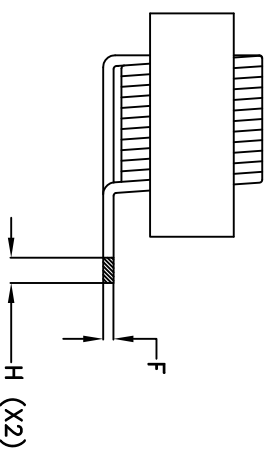
REVISION HISTORY			DESCRIPTION		
REV	ECN	DESCRIPTION	DATE	CHK	DATE
A1		REVISIONED ELEC. & MECH. SPEC.	01/13/18	JL	01/13/18



SCHEMATIC



TOP VIEW



SIDE VIEW

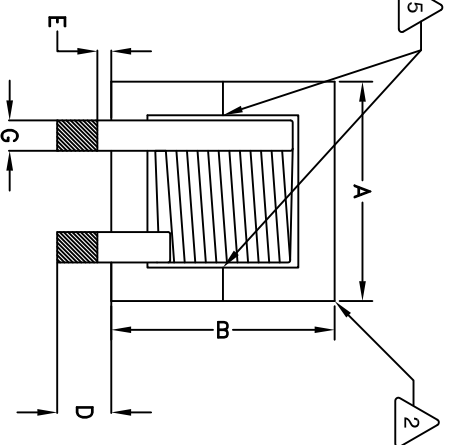
DC BIAS TABLE		
DC-BIAS (TYP)	L	
0A	80uH	
5A	80uH	
10A	78uH	
15A	76uH	
20A	74uH	
25A	72uH	
30A	68uH	
35A	65uH	
40A	60uH	
45A	57uH	
50A	54uH	

- BUILT TO ROHS COMPLIANCE AND LEAD FREE
- MARK PART NUMBER AND REVISION WHERE SHOWN
- VANISH PART AND CURE
APPLY SILICON WHERE SHOWN
- WRAP TAPE AROUND CORES
WITH CORES AND NOMEX SPACERS
ASSEMBLE PRE FORMED FLAT HELICAL COIL
CONSTRUCTION:

- WEIGHT: 505 GRAMS TYPICAL
RECOMMENDED OPERATING TEMP: -40°C TO 85°C AT 55 °C AMBIENT
H-POT TEST FOR WINDING TO CORE ISOLATION: 1KVDC, 2mA, 1 MIN
INTERWINDING CAPACITANCE = 19PF TYP @ SRF
|Z| = 4.40 KIL-OHMS TYP @ SRF
SRF = 4MHZ TYPICAL
RATED CURRENT = 85 AMPS
DCR = 3.5 MILLI-OHM MAX
INDUCTOR DC-BIAS: SEE TABLE ON RIGHT
L = 80uH ± 15% @ 10 KHZ, 0.25V, ZERO DC BIAS
SPECIFICATIONS @ 25°C:

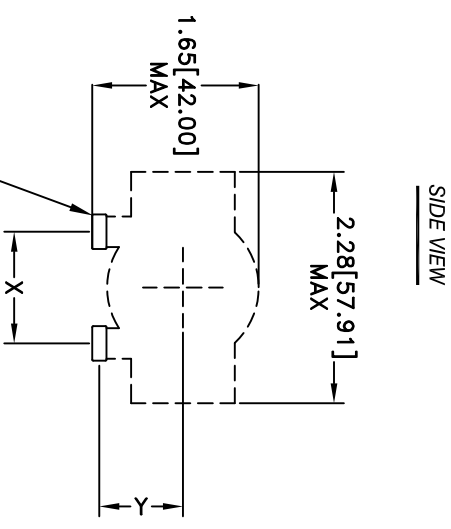
- VANISH DOLPH or EQUAL
SILICON DOW CORNING OR EQUAL
NOMEX SPACERS FOR SIDE AND CENTER LEG OF CORES
OUTER WRAP: 3M GLASS OR EQUAL
WIRE: UL RECOGNIZED 200°C RATED MAGNET WIRE
CORE: COMPACTED POWDERED CORE

- INSULATION CLASS 200°C REQUIRED
MATERIAL: UL RECOGNIZED 94V-0 FOR FLAMMABILITY
- NOTES: UNLESS OTHERWISE SPECIFIED, READ FROM BOTTOM UP.
CAGE CODE: 5DME2



FRONT VIEW

RECOMMENDED HOLE
0.14x0.34 [3.6x8.6] (X2)



TOP VIEW

QTY	CODE IDENT	MFG. P/N	DESCRIPTION	ITEM NO.
			PARTS LIST	

UNLESS OTHERWISE SPECIFIED	
DIMENSIONING AND TOLERANCE PER ANSI Y14.5M AND [DIMENSIONS].	DRAWN RL 2/11/11
TOLERANCE INCHES: .XX±.010 .X±.020 .XXX±.254 .XX±.51	ENGR. JLAU 2/11/11
ANGLE PROJECTION	APPR. JLAU 2/11/11
DO NOT SCALE DRAWING	

SIZE	DWG. NO.	REV
B	EKS5246-800M-85AV-SP	A1

TITLE:	
High Current Helical Inductor 80 uH, 85 Amps, Vertical	

www.coilw.com		Coil Winding Specialist, Inc.	
sales@coilw.com		353 W. GROVE AVE ORANGE, CA 92665	