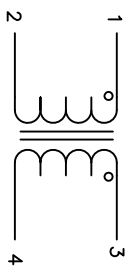


The information contained in this drawing is the sole property of Coil Winding Specialist Inc. (CWS)
 Any reproduction in part or whole without written permission of CWS is prohibited.



SCHEMATIC

- 8 BUILT TO ROHS COMPLIANCE AND LEAD FREE.
- 7 LABEL PART NUMBER, REVISION AND DATE CODE
- 6 APPLY RTV WHERE SHOWN
- 5 TIN LEADS APPROX. 0.5 INCH AND FLUSH WITH THE COIL BASE.
- 4 CONSTRUCTION:

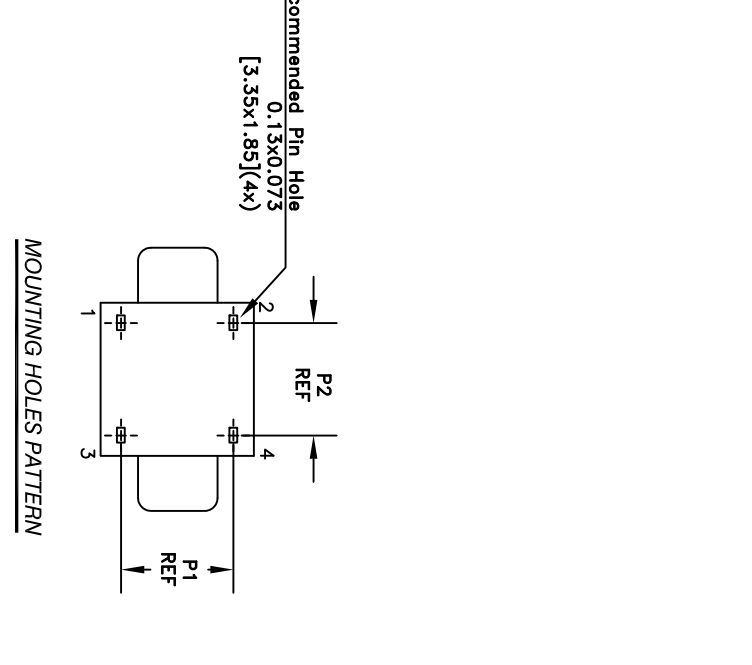
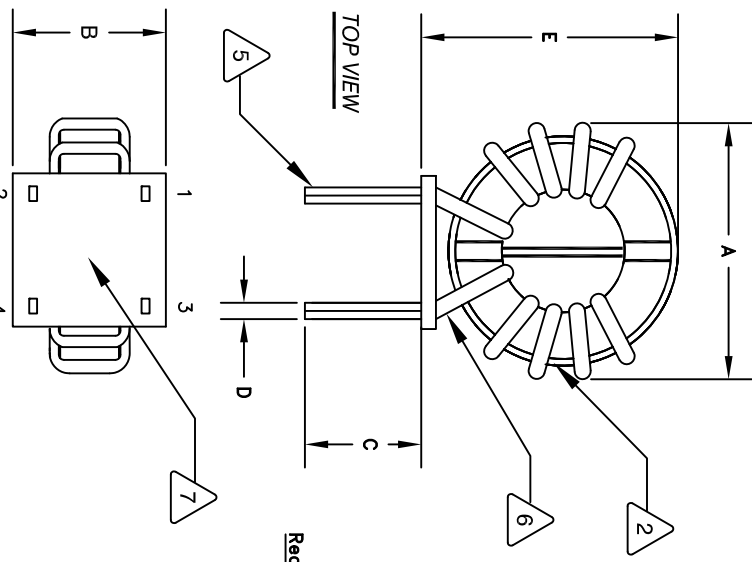
WEIGHT = 128 GRAMS TYP
 OPERATING TEMP RANGE = -25°C TO 120°C
 MAX TEMP RISE = 40°C
 INTERWINDING ISOLATION = 2000 VOLTS RMS
 DCR ON EACH WINDING = 10 mΩ MAX
 RATED VOLTAGE = 750 VAC OR VDC
 RATED CURRENT = 24 AMPS
 LEAKAGE INDUCTANCE = 15μH TYP @ 10KHz, 1 Vrms
 SRF = 357KHz TYPICAL
 INTERWINDING CAPACITANCE = 15pF TYP @ 10KHz
 |Z| = 5.5kΩ TYP @ SRF
 L = 20 mH MIN. @ 1 KHz, 1 Vrms, 0 ADC
 INSULATION RESISTANCE = 100 MEGA-OHMS MIN. @ 500 VDC
 SPECIFICATIONS AT 25°C:

- 3 WIRE: UL RECOGNIZED 200°C RATED MAGNET WIRE
 CWS BYTEMARK OR OTHER APPROVED PART
 CORE: NANOCRYSTALLINE OR AMORPHOUS CORE
- 2 BOBBIN RATING CLASS B (200°) REQUIRED
 MATERIAL: UL RECOGNIZED 94V-0 FOR FLAMMABILITY
- 1 ANY TOLERANCE. THIS DIM. CAN VARY A LITTLE FROM PART TO PART.
 "TYP" IN DIM. TABLE REFERS TO A NON-CRITICAL TYPICAL (AVERAGE) DIM. WITHOUT

NOTES: UNLESS OTHERWISE SPECIFIED, READ NOTES FROM BOTTOM UP.

DIMENSIONAL TOLERANCE INCHES [MM]						
A(OD) MAX	B(WIDTH) MAX	C(LEAD) MIN	D(LEAD DIA) TYP	E (HEIGHT) MAX	P1 REF	P2 REF
1.96 [49.78]	1.27 [32.20]	0.50 [12.70]	0.12x0.06 [3.00x1.52]	1.90 [48.26]	1.02 [25.91]	0.84 [21.36]

REVISION HISTORY			
REV	ECN	DESCRIPTION	DATE
A		PRODUCTION RELEASE	07/15/2020
A1		UPDATED MECH. SPEC.	08/24/2020



QTY	CODE IDENT	MFG. P/N	DESCRIPTION	ITEM NO.

AUTOCAD SOLIDWORKS		SIGN		DATE	

DIMENSIONING AND TOLERANCE PER ANSI Y14.5M AND [MILLIMETERS]		TOLERANCE INCHES:		TOLERANCE METRICS:	
XXX=±.005	XX=±.015	∅=+0°30'			
.XXX=±.127	.XX=±.38	∅=+0°30'			

ENGR.	APPR.	DATE	SCALE	REV
TN	JL	07/15/2020	B	A1

TITLE:		MOUNTING HOLES PATTERN	
Nanocrystalline Inductor Common Mode Choke Vertical Mount		P2 REF P1 REF	

PARTS LIST	
www.coilws.com	Coil Winding Specialist Inc.
sales@coilws.com	353 West Grove Ave Orange, California, 92865