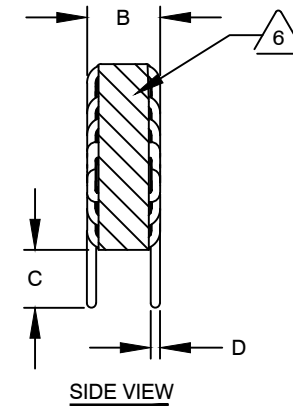
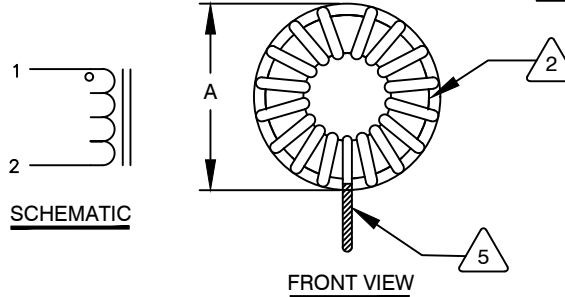


The information contained in this drawing is the sole property of CWS Coil Winding Specialist. Any reproduction in part or whole without written permission of CWS Coil Winding Specialist is prohibited.



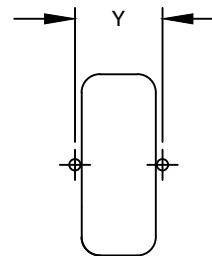
DIMENSIONAL TOLERANCES INCHES [MM]				
A MAX	B MAX	C MIN	D REF	Y REF
1.06 [27.00]	0.50 [12.65]	0.50 [12.70]	0.05 [1.15]	0.47 [12.00]

REVISION HISTORY						
REV	ECN	DESCRIPTION	SIGN & DATE			
			BY	DATE	CHK	DATE
A	-	INITIAL RELEASE	TN	06/22/2018	JL	06/22/2018
A1	-	UPDATED SPECS.	JZ	04/21/2021	JL	04/21/2021



DC BIAS TABLE

DC BIAS (AMP)	L @ 1.0 KHz
0	100uH
1	87uH
2	75uH
3	63uH
4	52uH
5	44uH



MOUNTING HOLES PATTERN

- 7 BUILD TO RoHS COMPLIANCE AND LEAD FREE.
 USING A PERMANENT MARKING METHOD
 MARK PART NUMBER AND REVISION, IF APPLICABLE.
 6 WRAP INDUCTOR WITH 3M # 79 OR EQUAL

5 (I.E. COIL MUST REST FLAT ON PCB). LEADS MUST BE TANGENT TO THE CORE
 REMOVE INSULATION AND TIN LEADS 0.50 INCH, FLUSH WITH THE COIL EDGE, AS SHOWN

- 4 CONSTRUCTION: WIND COILS EVENLY SPACED AROUND THE CORE

WEIGHT: 17 GRAMS TYPICAL
 INTERWINDING CAPACITANCE = 15 pF TYP @ SRF
 SRF = 3.8 MHz TYPICAL
 |Z| = 5.3 KILO-OHMS TYP @ SRF
 RECOMMENDED AMBIENT OPERATING TEMP: -40°C TO 200°C
 HI-POT TEST FOR WINDING TO CORE ISOLATION = 500 VDC 10 SEC
 CURRENT RATING : 5 AMPS, 40°C TEMP. RISE WITH SOME AIR FLOW
 DCR = 20.0 MILLI-OHMS MAX.

INDUCTOR DC BIAS: SEE TABLE ON THE RIGHT
 INDUCTANCE = 100 uH ± 15% @ 0 AMP DC BIAS, 1.0 KHz, 300mV

- 3 SPECIFICATIONS: @ 25° C

2 WIRE: UL RECOGNIZED 200°C RATED MAGNET WIRE
 CORE: HIGH POWDERED TOROIDAL CORE, CWS BYTEMARK OR OTHER APPROVED PART

- 1 MATERIAL: UL RECOGNIZED 94V-0 FOR FLAMMABILITY, RATING CLASS H (180°C MIN.) REQUIRED

ANY TOLERANCE. THIS DIM. CAN VARY A LITTLE FROM PART TO PART.
 "TYP" IN DIM. TOL. REFERS TO A NON-CRITICAL TYPICAL (AVERAGE) DIM. WITHOUT
 NOTES: UNLESS OTHERWISE STATED, READ NOTES FROM BOTTOM UP.

CAGE CODE: 5DME2

UNLESS OTHERWISE SPECIFIED
 DIMENSIONING AND TOLERANCE PER ANSI Y14.5M
 ALL DIMENSIONS ARE IN INCHES AND [MILLIMETERS].
 TOLERANCE INCHES:
 .XXX±.005 .XX±.015 $\angle = \pm 0^{\circ}30'$
 TOLERANCE METRICS:
 .XXX±.127 .XX±.38 $\angle = \pm 0^{\circ}30'$
 ANGLE PROJECTION
 DO NOT SCALE DRAWING

CODE IDENT	MFG. P/N	DESCRIPTION	ITEM NO.
PARTS LIST			
AUTOCAD	X	COILWS COM, INC www.coilws.com	CWS Coil Winding Specialist. 353 WEST GROVE ORANGE, CA 92865
SOLIDWORKS			
DRAWN	TN 06/22/2018	TITLE: TOROIDAL POWER INDUCTOR 100 uH, 5 Amps, Vertical	
CHECKED	JM 06/22/2018		
ENGR.	JL 06/22/2018		
APPR.	JL 06/22/2018		
SIZE DWG. NO.		SN203-101M-5.0AV	REV A1
SCALE		2=1	SHEET 1 OF 1