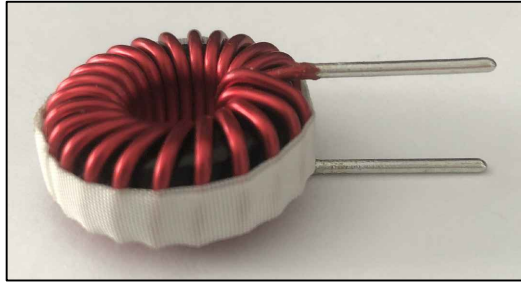
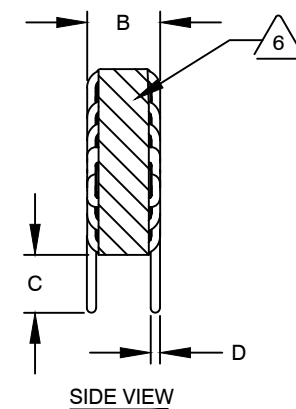
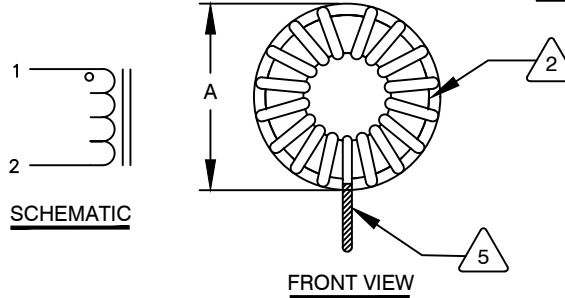


The information contained in this drawing is the sole property of CWS Coil Winding Specialist.
Any reproduction in part or whole without written permission of CWS Coil Winding Specialist is prohibited.



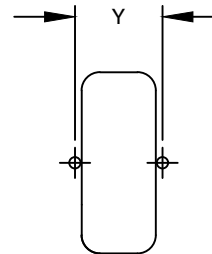
DIMENSIONAL TOLERANCES INCHES [MM]				
A MAX	B MAX	C MIN	D REF	Y REF
1.21 [30.70]	0.55 [14.00]	0.50 [12.70]	0.06 [1.60]	0.45 [11.40]

REVISION HISTORY						
REV	ECN	DESCRIPTION	SIGN & DATE			
			BY	DATE	CHK	DATE
A	-	INITIAL RELEASE	TN	11/06/2018	JL	11/06/2018
A1	-	UPDATED SPECS.	JZ	11/23/2021	JL	11/23/2021



DC BIAS TABLE

DC BIAS (AMP)	L @ 1.0 KHz
0	53uH
1	49uH
2	46uH
3	42uH
4	38uH
5	35uH
6	32uH



MOUNTING HOLES PATTERN

- 7 BUILD TO RoHS COMPLIANCE AND LEAD FREE.
USING A PERMANENT MARKING METHOD
MARK PART NUMBER AND REVISION, IF APPLICABLE,
WRAP INDUCTOR WITH 3M # 79 OR EQUAL

- (I.E. COIL MUST REST FLAT ON PCB). LEADS MUST BE TANGENT TO THE CORE
REMOVE INSULATION AND TIN LEADS 0.50 INCH, FLUSH WITH THE COIL EDGE, AS SHOWN

- 4 CONSTRUCTION: WIND COILS EVENLY SPACED AROUND THE CORE

WEIGHT: 26 GRAMS TYPICAL
INTERWINDING CAPACITANCE = 14 pF TYP @ SRF
SRF = 5.8 MHz TYPICAL
|Z| = 6.5 KILO-OHMS TYP @ SRF
RECOMMENDED AMBIENT OPERATING TEMP: -40°C TO 200°C
HI-POT TEST FOR WINDING TO CORE ISOLATION = 500 VDC 10 SEC
CURRENT RATING : 6 AMPS, 40°C TEMP. RISE WITH SOME AIR FLOW
DCR = 7.6 MILLI-OHMS MAX.

INDUCTOR DC BIAS: SEE TABLE ON THE RIGHT
INDUCTANCE = 51 uH ± 15% @ 0 AMP DC BIAS, 1.0 KHz, 300mV

- 3 SPECIFICATIONS: @ 25° C

WIRE: UL RECOGNIZED 200°C RATED MAGNET WIRE
CORE: HIGH POWDERED TOROIDAL CORE, CWS BYTEMARK OR OTHER APPROVED PART

- 1 MATERIAL: UL RECOGNIZED 94V-0 FOR FLAMMABILITY, RATING CLASS H (180°C MIN.) REQUIRED

ANY TOLERANCE. THIS DIM. CAN VARY A LITTLE FROM PART TO PART.
"TYP" IN DIM. TOL. REFERS TO A NON-CRITICAL TYPICAL (AVERAGE) DIM. WITHOUT
NOTES: UNLESS OTHERWISE STATED, READ NOTES FROM BOTTOM UP.

CAGE CODE: 5DME2

UNLESS OTHERWISE SPECIFIED
DIMENSIONING AND TOLERANCE PER ANSI Y14.5M
ALL DIMENSIONS ARE IN INCHES AND [MILLIMETERS].
TOLERANCE INCHES: .XXX=±.005 .XX=±.015 $\angle = \pm 0^{\circ}30'$
TOLERANCE METRICS: .XXX=±.127 .XX=±.38 $\angle = \pm 0^{\circ}30'$
ANGLE PROJECTION
DO NOT SCALE DRAWING

CODE IDENT	MFG. P/N	DESCRIPTION	ITEM NO.
PARTS LIST			
AUTOCAD	X	COILWS COM, INC www.coilws.com	CWS Coil Winding Specialist. 353 WEST GROVE ORANGE, CA 92865
SOLIDWORKS			
DRAWN	TN 11/06/2018	TITLE: TOROIDAL POWER INDUCTOR 51 uH, 6 Amps, Vertical	
CHECKED	JM 11/06/2018		
ENGR.	JL 11/06/2018		
APPR.	JL 11/06/2018	SIZE DWG. NO.	REV
		B SN229-510M-6.0AV	A1
		SCALE 2=1	SHEET 1 OF 1