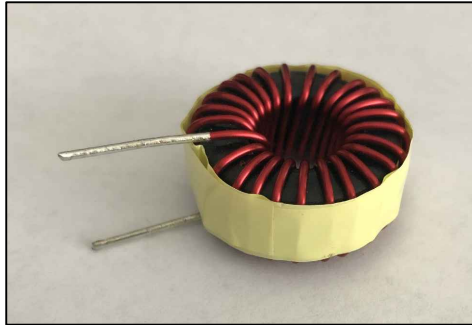
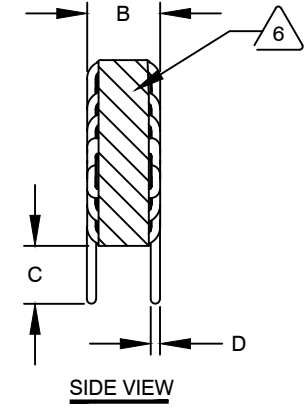
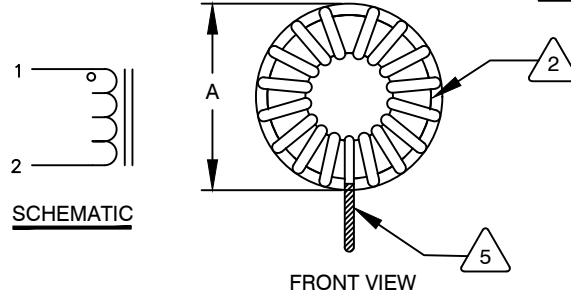


The information contained in this drawing is the sole property of CWS Coil Winding Specialist. Any reproduction in part or whole without written permission of CWS Coil Winding Specialist is prohibited.

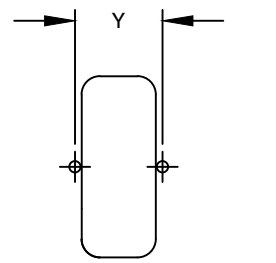


DIMENSIONAL TOLERANCES INCHES [MM]				
A	B	C	D	Y
MAX	MAX	MIN	REF	REF
1.22 [30.95]	.58 [14.65]	.50 [12.70]	.042 [1.08]	0.71 [18.00]

REVISION HISTORY						
REV	ECN	DESCRIPTION	SIGN & DATE			
			BY	DATE	CHK	DATE
A	-	INITIAL RELEASE	JLL	03/24/2011		
A1	-	UPDATED SPECS.	JZ	08/05/2020	JL	08/05/2020



DC BIAS TABLE	
DC BIAS (AMP)	L @ 1.0 KHz
0	100uH
2	92.8uH
4	78.7uH
6	63.7uH
8	52.8uH
10	43.3uH



- 7 BUILD TO RoHS COMPLIANCE AND LEAD FREE.
- 6 USING A PERMANENT MARKING METHOD MARK PART NUMBER AND REVISION, IF APPLICABLE, WRAP INDUCTOR WITH 3M # 79 OR EQUAL

5 (I.E. COIL MUST REST FLAT ON PCB). LEADS MUST BE TANGENT TO THE CORE REMOVE INSULATION AND TIN LEADS 0.50 INCH, FLUSH WITH THE COIL EDGE, AS SHOWN

- 4 CONSTRUCTION: WIND COILS EVENLY SPACED AROUND THE CORE
- WEIGHT: 37 GRAMS TYPICAL
- INTERWINDING CAPACITANCE = 14.48 pF TYP @ SRF
- SRF = 4.1 MHz TYPICAL
- |Z| = 11.09 KILO-OHMS TYP @ SRF
- RECOMMENDED AMBIENT OPERATING TEMP: -40°C TO 200°C
- HI-POT TEST FOR WINDING TO CORE ISOLATION = 500 VDC 10 SEC
- CURRENT RATING : 7.8 AMPS, 40°C TEMP. RISE WITH SOME AIR FLOW
- DCR = 17.5 MILLI-OHMS MAX.
- INDUCTOR DC BIAS: SEE TABLE ON THE RIGHT

3 SPECIFICATIONS: @ 25° C

2 WIRE: UL RECOGNIZED 155°C RATED MAGNET WIRE
CORE: HIGH POWDERED TOROIDAL CORE, CWS BYTEMARK OR OTHER APPROVED PART

1 MATERIAL: UL RECOGNIZED 94V-0 FOR FLAMMABILITY, RATING CLASS B (130°C MIN.) REQUIRED

ANY TOLERANCE. THIS DIM. CAN VARY A LITTLE FROM PART TO PART.
"TYP" IN DIM. TOL. REFERS TO A NON-CRITICAL TYPICAL (AVERAGE) DIM. WITHOUT
NOTES: UNLESS OTHERWISE STATED, READ NOTES FROM BOTTOM UP.
CAGE CODE: 5DME2

CODE IDENT	MFG. P/N	DESCRIPTION	ITEM NO.
PARTS LIST			
AUTOCAD	X	COILWS COM, INC www.coilws.com	CWS Coil Winding Specialist. 353 WEST GROVE ORANGE, CA 92865
SOLIDWORKS			
DRAWN	SIGN DATE	TITLE: TOROIDAL POWER INDUCTOR 100 uH, 7.8 Amps, Vertical	
CHECKED	CT 10/06/2008		
ENGR.	KLC 10/06/2008		
APPR.	KLC 03/24/2011	SIZE DWG. NO.	REV
		B SN270-101M-7.8AV	A1
		SCALE 2=1	SHEET 1 OF 1

UNLESS OTHERWISE SPECIFIED
DIMENSIONING AND TOLERANCE PER ANSI Y14.5M
ALL DIMENSIONS ARE IN INCHES AND [MILLIMETERS].
TOLERANCE INCHES: .XXX=±.005 .XX=±.015 $\angle = \pm 0^{\circ}30'$
TOLERANCE METRICS: .XXX=±.127 .XX=±.38 $\angle = \pm 0^{\circ}30'$
ANGLE PROJECTION
DO NOT SCALE DRAWING