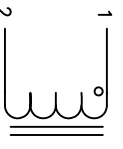


The information contained in this drawing is the sole property of CMS Coil Winding Specialist. Any reproduction in part or whole without written permission of CMS Coil Winding Specialist is prohibited.

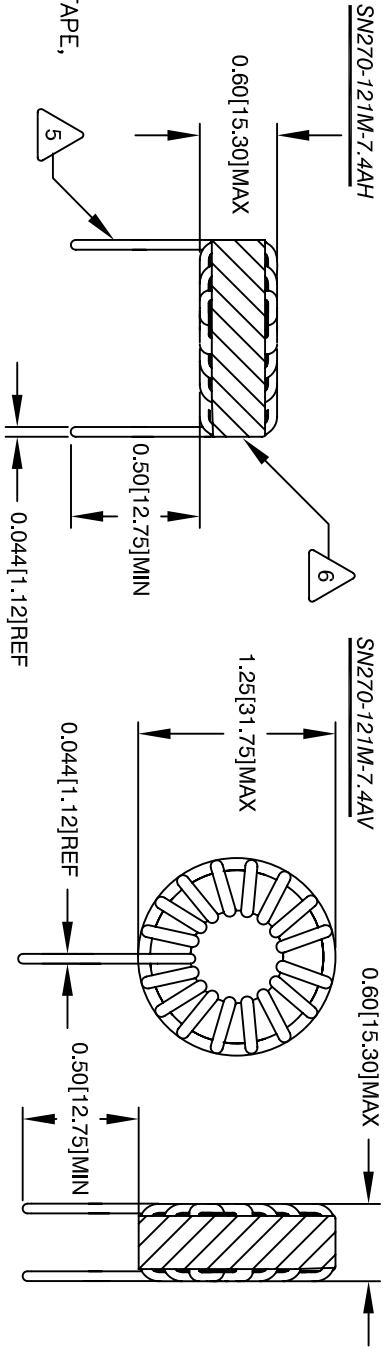
REVISION HISTORY

REV	ECN	DESCRIPTION	SIGN & DATE		
A		PRODUCTION RELEASE	BY	DATE	CHK
			JLL	9/6/11	

DC BIAS @10KHZ	0A	2A	4A	6A	8A	10A
120 uH	113 uH	93.3 uH	74.9 uH	59.7 uH	48.0 uH	



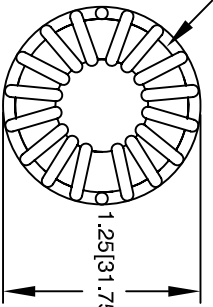
SCHEMATIC



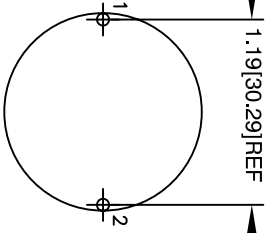
FRONT VIEW

FRONT VIEW

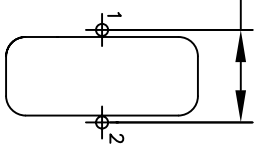
SIDE VIEW



BOTTOM VIEW



MOUNTING HOLES PATTERN



MOUNTING HOLES PATTERN

- WIRE: UL RECOGNIZED 155°C RATED MAGNET WIRE  
CWS BYTEMARK (www.cwsbytemark.com) OR APPROVED VENDOR  
CORE: COATED SENDUST/KOOLMU TOROIDAL CORE

- WIND COILS EVENLY SPACED AROUND THE CORE  
CONSTRUCTION:  
WEIGHT: 38 GRAMS (TYP)  
HI-POT : WINDING TO CORE ISOLATION = 500VDC MIN  
NO AIR FLOW  
CURRENT RATING : 7.4 AMPS, 40 °C TEMP. RISE,  
DCR : 20.2 MILLI-OHMS TYP.  
SELF RESONANCE FREQUENCY : 3.6 MHz (TYP)  
INTERWINDING CAPACITANCE @ 10KHz : 15.02pF (TYP)  
INDUCTANCE WITH DC BIAS : PLEASE SEE TABLE ABOVE  
INDUCTANCE = 120 uH ±15% @ LOW DC BIAS, 10KHZ, 250mV SPECIFICATIONS:

- RATING CLASS B (130°C MIN.) REQUIRED  
MATERIAL: UL RECOGNIZED 94V-0 FOR FLAMMABILITY

READ TEXT FROM BOTTOM UP  
NOTES: TOROIDAL POWER CHOKE. ALL DIMENSIONS IN INCHES [MM]

CODE IDENT	MFG. P/N	DESCRIPTION	ITEM NO.
PARTS LIST			
AUTOCAD	X		
SOLIDWORKS			
SIGN	DATE	sales@coilws.com www.coilws.com 353 W Grove Ave Orange, CA 92665	
DRWNN	DATE	Coil Winding Specialist, Inc.	
KLC	10/6/08	Toroidal Power Inductor	
CRDND	CT	120 uH, 7.4 Amp	
ENGR	KLC	TITLE:	
APPR	JLJU	SIZE [IMG. NO.]	
	05/03/11	B	
		SCALE NOT TO SCALE	
		SN270-121M-7.4A	
		REV A	

UNLESS OTHERWISE SPECIFIED  
DIMENSIONING AND TOLERANCE PER ANSI Y14.5M AND [MILLIMETERS].  
TOLERANCE INCHES:  $\phi$  = ±0.30  
XXX = ±0.005 XX = ±0.015  
TOLERANCE METRICS:  $\phi$  = ±0.30  
XXX = ±0.127 XX = ±0.38

ANGLE PROJECTION  $\phi$   
DO NOT SCALE DRAWING