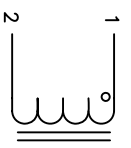


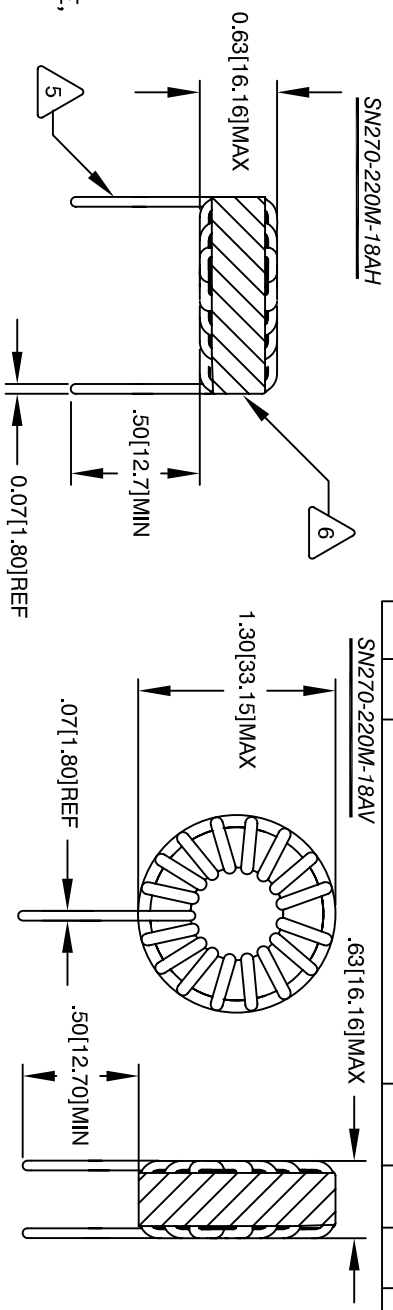
The information contained in this drawing is the sole property of CMS Coil Winding Specialist. Any reproduction in part or whole without written permission of CMS Coil Winding Specialist is prohibited.

REVISION HISTORY		SIGN & DATE	
REV	ECN	DESCRIPTION	DATE
A		PRODUCTION RELEASE	JUL 9/24/11
B		ELECT. AND MECHAN. SPEC. CHANGE	9/2/12

DC BIAS @ 10KHZ	23 UH	20 UH	16 UH	13 UH	11 UH
0A	23 UH	20 UH	16 UH	13 UH	11 UH
5A	20 UH	16 UH	13 UH	11 UH	
10A	16 UH	13 UH	11 UH		
15A	13 UH	11 UH			
18A	11 UH				



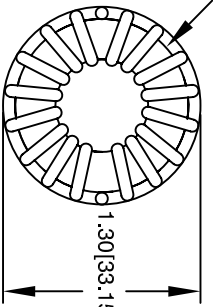
SCHEMATIC



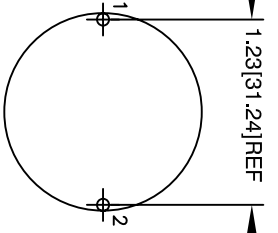
FRONT VIEW

FRONT VIEW

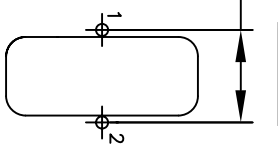
SIDE VIEW



BOTTOM VIEW



MOUNTING HOLES PATTERN



MOUNTING HOLES PATTERN

- WIRE: UL RECOGNIZED 155°C RATED MAGNET WIRE
CWS BYTEMARK (www.cwsbytemark.com) OR APPROVED VENDOR
CORE: COATED SENDUST/KOOLMU TOROIDAL CORE

- WIND COILS EVENLY SPACED AROUND THE CORE CONSTRUCTION:

- WEIGHT: 36 GRAMS (TYP)
HI-POT : WINDING TO CORE ISOLATION = 500VDC MIN
NO AIR FLOW
CURRENT RATING : 18 AMPS, 40 °C TEMP. RISE,
DCR: 4.0 MILLI-OHMS MAX.
SELF RESONANCE FREQUENCY : 10 MHZ (TYP)
INTERWINDING CAPACITANCE @ 10KHz : 11.48pF (TYP)
INDUCTANCE WITH DC BIAS : PLEASE SEE TABLE ABOVE
INDUCTANCE = 22 uH ±15% @ LOW DC BIAS, 10KHz, 250mV SPECIFICATIONS:

- RATING CLASS B (130°C MIN.) REQUIRED
MATERIAL: UL RECOGNIZED 94V-0 FOR FLAMMABILITY
READ TEXT FROM BOTTOM UP
NOTES: TOROIDAL POWER CHOKE. ALL DIMENSIONS IN INCHES [MM]

UNLESS OTHERWISE SPECIFIED	
DIMENSIONING AND TOLERANCE PER ANSI Y14.5M AND [MILLIMETERS]	ANGLE PROJECTION
TOLERANCE INCHES: XXX=±.005 XX=±.015 XX=±.030 XXX=±.127 XX=±.254	DO NOT SCALE DRAWING

CODE IDENT	MFG. P/N	DESCRIPTION	ITEM NO.
PARTS LIST			
AUTOCAD	X		
SOLIDWORKS			
SIGN	DATE		
DRWNN	KLC	10/6/08	
CHKDD	CT	10/6/08	
ENGR	KLC	10/6/08	
APPR	KLC	10/6/08	
TITLE:		Toroidal Power Inductor	
SIZE [Dwg. No.]		SN270-220M-18A	
SCALE		2=1	
REV		B	

sales@coilws.com
www.coilws.com
Coil Winding Specialist, Inc.
353 W Grove Ave
Orange, CA 92665