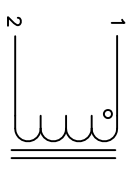


The information contained in this drawing is the sole property of CMS Coil Winding Specialist. Any reproduction in part or whole without written permission of CMS Coil Winding Specialist is prohibited.



SCHEMATIC

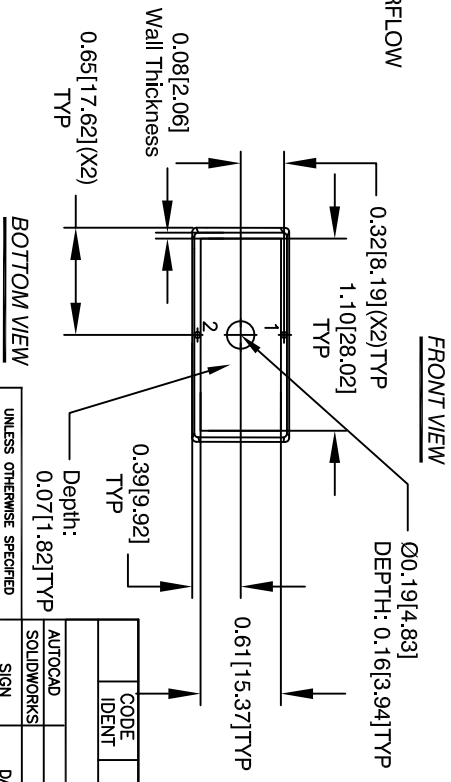
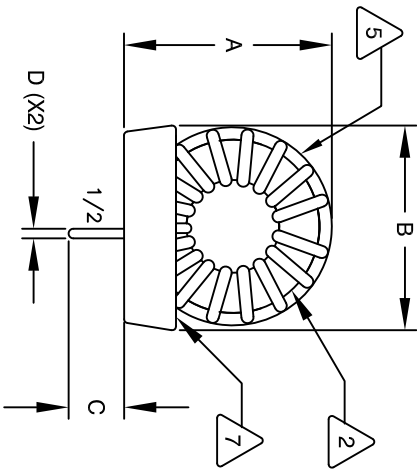
- 8 BUILD TO ROHS COMPLIANCE AND LEAD FREE
- ENCAPSULATE WOUND INDUCTOR WITH MACROCAST
- MARK PART NUMBER, REVISION AND DATE CODE
- WRAP INDUCTOR WITH GLASS TAPE
- CONSTRUCTION:

- WEIGHT = 45 GRAMS
- OPERATING TEMP RANGE = -25°C TO 120°C
- MAXIMUM TEMPERATURE RISE = 40°C WITH SOME AIRFLOW
- SRF = GREATER THAN 10MHZ
- LS @ DC BIAS: SEE TABLE ON THE RIGHT
- CURRENT RATING = 17 AMPS
- DCR = 4.25 MILLI-OHMS MAX
- INDUCTANCE = 27 uH ± 15% @ 1 KHZ, 250mV
- SPECIFICATIONS @ 25°C
- MICROCAST P/N CR 6127 B2 WHITE; UL94V-0
- WIRE: CLASS 200°C RATED
- CORE: POWDERED TOROIDAL CORE
- RATING CLASS H (180°C MINIMUM) REQUIRED
- MATERIAL: UL RECOGNIZED FOR FLAMMABILITY

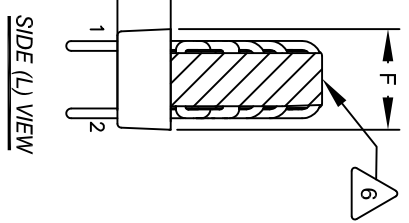
ANY TOLERANCE. THIS DIM. CAN VARY A LITTLE FROM PART TO PART.
 "TYP" IN DIM. TABLE REFERS TO A NON-CRITICAL TYPICAL (AVERAGE) DIM. WITHOUT NOTES: UNLESS OTHERWISE SPECIFIED, READ FROM BOTTOM UP.
 CAGE CODE: 5DME2

DIMENSIONAL TOLERANCES INCHES [MM]

A	B	C	D	E	F	P
TYP	TYP	TYP	REF	TYP	TYP	REF
1.44 [36.70]	1.32 [33.50]	0.32 [8.25]	0.07 [1.80]	0.46 [11.80]	0.78 [19.88]	0.68 [17.27]



FRONT VIEW



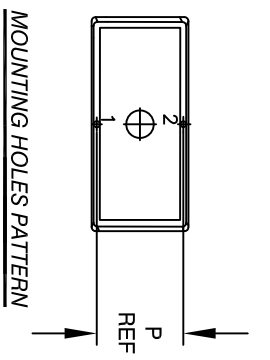
SIDE (L) VIEW

REVISION HISTORY

REV	ECN	DESCRIPTION	BR	DATE	CHK	DATE
A1		UPDATED DIM. TOLERANCES AND CORRECTED CUSTOMER P/N	TN	01/14/2021	JL	01/14/2021
A2		REMOVED CUSTOMER P/N	TN	04/19/21	JL	04/19/21

DC BIAS TABLE

DC BIAS (AMP)	Ls@1KHz (REF)
0	29 uH
2	27 uH
4	24 uH
6	24 uH
10	19 uH
13	16uH
17	14uH



MOUNTING HOLES PATTERN

PARTS LIST

CODE IDENT	MFG. P/N	DESCRIPTION	ITEM NO.
AUTOCAD SOLIDWORKS	X		
UNLESS OTHERWISE SPECIFIED			
DRAWN	TN	11/23/2020	
CHKD	JL	11/23/2020	
ENGR	JL	11/23/2020	
APPR	JL	11/23/2020	

TITLE: Toroidal Power Chokes, 27UH

COWS COM, INC
 353 W. Grove Avenue
 Orange, CA 92865

CWS Coil Winding Specialist

SIZE	DWG. NO.	REV
B	SN270-270M-17AV-P	A2