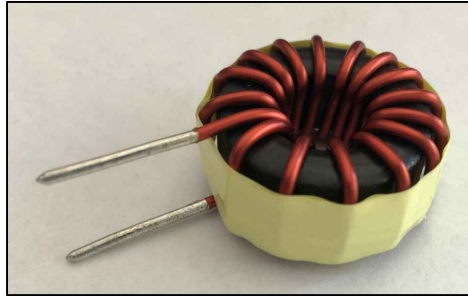
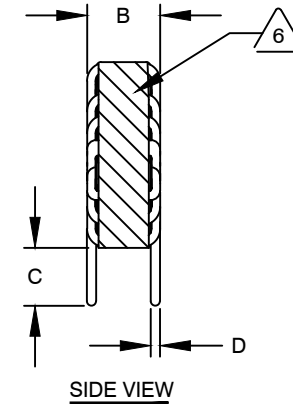
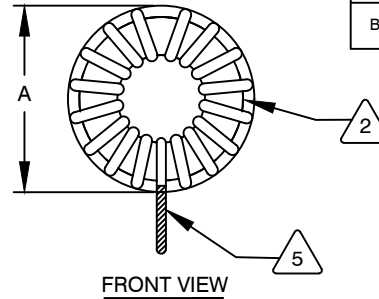
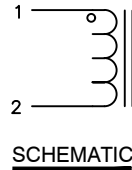


The information contained in this drawing is the sole property of CWS Coil Winding Specialist.  
Any reproduction in part or whole without written permission of CWS Coil Winding Specialist is prohibited.



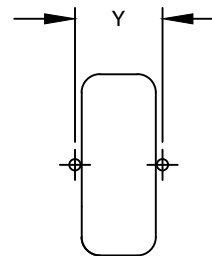
| DIMENSIONAL TOLERANCES<br>INCHES [MM] |                 |                 |                 |                 |
|---------------------------------------|-----------------|-----------------|-----------------|-----------------|
| A<br>MAX                              | B<br>MAX        | C<br>MIN        | D<br>REF        | Y<br>REF        |
| 1.30<br>[33.00]                       | 0.63<br>[16.00] | 0.50<br>[12.70] | 0.065<br>[1.65] | 0.54<br>[13.80] |

| REVISION HISTORY |     |                               |             |            |     |            |
|------------------|-----|-------------------------------|-------------|------------|-----|------------|
| REV              | ECN | DESCRIPTION                   | SIGN & DATE |            |     |            |
|                  |     |                               | BY          | DATE       | CHK | DATE       |
| A                | -   | INITIAL RELEASE               | JLL         | 03/24/2011 |     |            |
| B                | -   | ELECT. AND MECH. SPEC. CHANGE | AK          | 08/15/2012 | JL  | 08/15/2012 |
| B1               | -   | UPDATED SPECS.                | JZ          | 06/01/2021 | JL  | 06/01/2021 |



**DC BIAS TABLE**

| DC BIAS (AMP) | L @ 1.0 KHz |
|---------------|-------------|
| 0             | 39.0uH      |
| 5             | 32.0uH      |
| 10            | 25.0uH      |
| 12            | 23.2uH      |



7 BUILD TO RoHS COMPLIANCE AND LEAD FREE.

USING A PERMANENT MARKING METHOD  
MARK PART NUMBER AND REVISION, IF APPLICABLE,  
WRAP INDUCTOR WITH 3M # 79 OR EQUAL



(I.E. COIL MUST REST FLAT ON PCB). LEADS MUST BE TANGENT TO THE CORE  
REMOVE INSULATION AND TIN LEADS 0.50 INCH, FLUSH WITH THE COIL EDGE, AS SHOWN



4 CONSTRUCTION: WIND COILS EVENLY SPACED AROUND THE CORE

WEIGHT: 38.1 GRAMS TYPICAL  
INTERWINDING CAPACITANCE = 11.9 pF TYP @ SRF  
SRF = 7 MHz TYPICAL  
|Z| = 5.38 KILO-OHMS TYP @ SRF  
RECOMMENDED AMBIENT OPERATING TEMP: -40°C TO 200°C  
HI-POT TEST FOR WINDING TO CORE ISOLATION = 500 VDC 10 SEC  
CURRENT RATING : 12.2 AMPS, 40°C TEMP. RISE WITH SOME AIR FLOW  
DCR = 6.0 MILLI-OHMS MAX.  
INDUCTOR DC BIAS: SEE TABLE ON THE RIGHT

INDUCTANCE = 39 uH ± 15% @ 0 AMP DC BIAS, 1.0 KHz, 300mV

3 SPECIFICATIONS: @ 25° C



WIRE: UL RECOGNIZED 200°C RATED MAGNET WIRE  
CORE: HIGH POWDERED TOROIDAL CORE, CWS BYTEMARK OR OTHER APPROVED PART

1 MATERIAL: UL RECOGNIZED 94V-0 FOR FLAMMABILITY, RATING CLASS H (180°C MIN.) REQUIRED

ANY TOLERANCE. THIS DIM. CAN VARY A LITTLE FROM PART TO PART.

"TYP" IN DIM. TOL. REFERS TO A NON-CRITICAL TYPICAL (AVERAGE) DIM. WITHOUT

NOTES: UNLESS OTHERWISE STATED, READ NOTES FROM BOTTOM UP.

CAGE CODE: 5DME2

| UNLESS OTHERWISE SPECIFIED   |  |
|--|--|
| DIMENSIONING AND TOLERANCE PER ANSI Y14.5M                           |  |
| ALL DIMENSIONS ARE IN INCHES AND [MILLIMETERS].                      |  |
| TOLERANCE INCHES:<br>.XXX=±.005 .XX=±.015 <math>\angle=±0°30'</math> |  |
| TOLERANCE METRICS:<br>.XXX=±.127 .XX=±.38 <math>\angle=±0°30'</math> |  |
| ANGLE PROJECTION   |  |
| DO NOT SCALE DRAWING   |  |

| CODE IDENT        | MFG. P/N          | DESCRIPTION  | ITEM NO.   |
|-------------------|-------------------|--|--|
| <b>PARTS LIST</b> |                   |  |  |
| AUTOCAD           | X                 | <b>COILWS COM, INC</b><br>www.coilws.com                     | CWS Coil Winding Specialist.<br>353 WEST GROVE<br>ORANGE, CA 92865 |
| SOLIDWORKS        |                   |  |  |
| DRAWN             | SIGN DATE         | TITLE: TOROIDAL POWER INDUCTOR<br>39 uH, 12.2 Amps, Vertical |  |
| CHECKED           | CT 10/06/2008     |  |  |
| ENGR.             | KLC 10/06/2008    |  |  |
| APPR.             | KLC 10/06/2008    |  |  |
| SIZE              | DWG. NO.          | REV  |  |
| B                 | SN270-390M-12.2AV | B1   |  |
| SCALE             | 2=1               |  | SHEET 1 OF 1   |