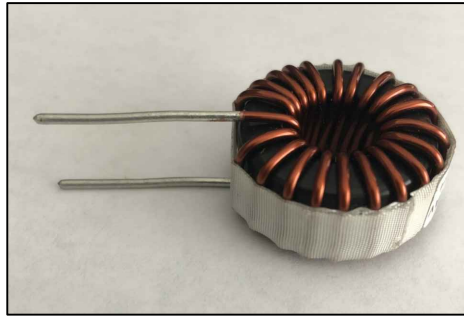
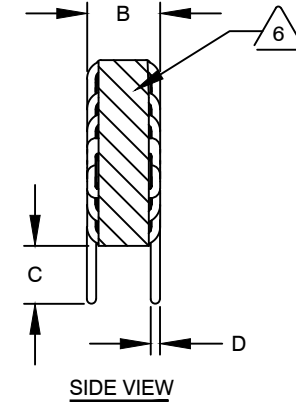
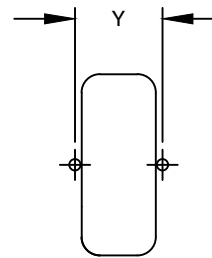
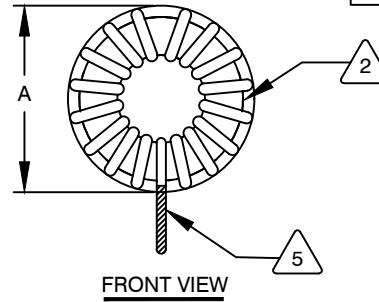
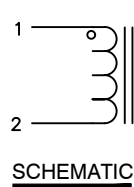


The information contained in this drawing is the sole property of CWS Coil Winding Specialist.  
Any reproduction in part or whole without written permission of CWS Coil Winding Specialist is prohibited.



DIMENSIONAL TOLERANCES INCHES [MM]				
A MAX	B MAX	C MIN	D REF	Y REF
1.30 [33.02]	.62 [15.87]	.50 [12.70]	.057 [1.46]	0.62 [15.67]

REVISION HISTORY					
REV	ECN	DESCRIPTION	SIGN & DATE		
			BY	DATE	CHK
A	-	INITIAL RELEASE	JLL	05/03/2011	
B	-	REVISED MECHANICAL SPEC.	TN	02/04/2020	JL 02/04/2020
B1	-	UPDATED SPECS.	JZ	08/05/2020	JL 08/05/2020



**DC BIAS TABLE**

DC BIAS (AMP)	L @ 1.0 KHz
0	73.2uH
2	67.2uH
4	58.7uH
6	50.1uH
8	42.2uH
10	35.5uH

7 BUILD TO RoHS COMPLIANCE AND LEAD FREE.

USING A PERMANENT MARKING METHOD  
MARK PART NUMBER AND REVISION, IF APPLICABLE,  
WRAP INDUCTOR WITH 3M # 79 OR EQUAL



(I.E. COIL MUST REST FLAT ON PCB). LEADS MUST BE TANGENT TO THE CORE  
REMOVE INSULATION AND TIN LEADS 0.50 INCH, FLUSH WITH THE COIL EDGE, AS SHOWN

4 CONSTRUCTION: WIND COILS EVENLY SPACED AROUND THE CORE

WEIGHT: 40 GRAMS TYPICAL  
INTERWINDING CAPACITANCE = 14.85 pF TYPI @ SRF  
SRF = 4.9 MHz TYPICAL  
|Z| = 7.35 KILO-OHMS TYP @ SRF  
RECOMMENDED AMBIENT OPERATING TEMP: -40°C TO 200°C  
HI-POT TEST FOR WINDING TO CORE ISOLATION = 500 VDC 10 SEC  
CURRENT RATING : 10 AMPS, 40°C TEMP. RISE WITH SOME AIR FLOW  
DCR = 9.64 MILLI-OHMS MAX.  
INDUCTOR DC BIAS: SEE TABLE ON THE RIGHT

INDUCTANCE = 68 uH ± 15% @ 0 AMP DC BIAS, 1.0 KHz, 300mV

3 SPECIFICATIONS: @ 25° C



WIRE: UL RECOGNIZED 155°C RATED MAGNET WIRE  
CORE: HIGH POWDERED TOROIDAL CORE, CWS BYTEMARK OR OTHER APPROVED PART

1 MATERIAL: UL RECOGNIZED 94V-0 FOR FLAMMABILITY, RATING CLASS B (130°C MIN.) REQUIRED

ANY TOLERANCE. THIS DIM. CAN VARY A LITTLE FROM PART TO PART.

"TYP" IN DIM. TOL. REFERS TO A NON-CRITICAL TYPICAL (AVERAGE) DIM. WITHOUT

NOTES: UNLESS OTHERWISE STATED, READ NOTES FROM BOTTOM UP.

CAGE CODE: 5DME2

UNLESS OTHERWISE SPECIFIED  
DIMENSIONING AND TOLERANCE PER ANSI Y14.5M  
ALL DIMENSIONS ARE IN INCHES AND [MILLIMETERS].  
TOLERANCE INCHES:  
.XXX=±.005 .XX=±.015 <math>\angle = \pm 0^{\circ}30'</math>  
TOLERANCE METRICS:  
.XXX=±.127 .XX=±.38 <math>\angle = \pm 0^{\circ}30'</math>  
ANGLE PROJECTION  
DO NOT SCALE DRAWING

CODE IDENT	MFG. P/N	DESCRIPTION	ITEM NO.
<b>PARTS LIST</b>			
AUTOCAD	X	<b>COILWS COM, INC</b> www.coilws.com	CWS Coil Winding Specialist. 353 WEST GROVE ORANGE, CA 92865
SOLIDWORKS			
SIGN	DATE	TITLE: TOROIDAL POWER INDUCTOR 68 uH, 10 Amps, Vertical	
DRAWN	KLC 10/06/2008		
CHECKED	CT 10/06/2008		
ENGR.	KLC 10/06/2008		
APPR.	JLAU 05/03/2011	SIZE DWG. NO.	REV
		B SN270-680M-10AV	B1
SCALE		2=1	SHEET 1 OF 1