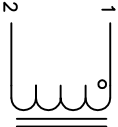
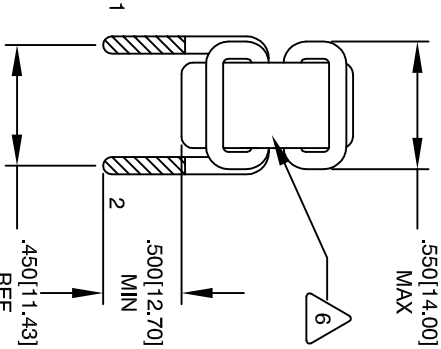
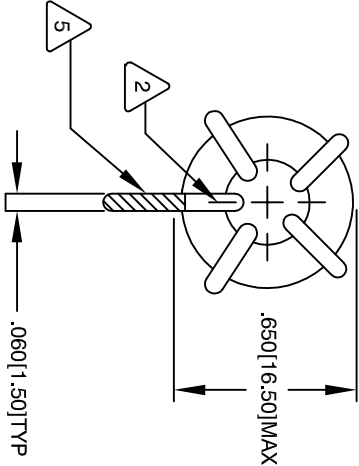


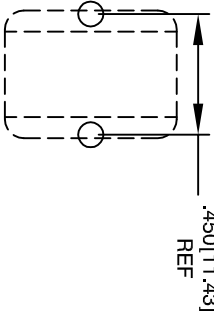
The information contained in this drawing is the sole property of CWS Coil Winding Specialist. Any reproduction in part or whole without written permission of CWS Coil Winding Specialist is prohibited.

REVISION HISTORY					
REV	ECN	DESCRIPTION	SIGN & DATE		
			BY	DATE	DATE
A		PRODUCTION RELEASE	RPR	8/22/07	JLAU 8/22/07

VERTICAL CONFIGURATION




SCHEMATIC



MOUNTING HOLES PATTERN

- 7 BUILT TO ROHS COMPLIANCE AND LEAD FREE.
- 6 WHERE SHOWN, USING A PERMANENT MARKING METHOD IF APPLICABLE. MARK PART NUMBER AND REVISION
- 5 FLUSH WITH THE COIL EDGE. AS SHOWN
- 4 REMOVE INSULATION AND TIN LEADS APPROX. 0.75 INCH CONSTRUCTION:
- 3 WIND WIRE TO CORE EVENLY SPACED
- 2 WEIGHT = 5.8 GRAMS
HI-POT TEST FOR WIRE TO CORE = 500 VDC
INDUCTANCE @ RATED CURRENT = uH
DC CURRENT RATING = 15.0 AMPS MAX
DCR = 2.25 MILLI-OHMS, MAX
INDUCTANCE @ 0 AMPS = 1.65 uH, ± 20%, 1 KHz., 0.25 Vrms
SPECIFICATIONS @ 25 °C
- 1 WIRE: UL RECOGNIZED 130°C RATED MAGNET WIRE
CORE: COATED IRON POWDER

NOTES: UNLESS OTHERWISE SPECIFIED. TOROIDAL INDUCTOR
READ FROM BOTTOM UP.

CODE		MFG. P/N	DESCRIPTION	ITEM NO.
IDENT				
PARTS LIST				
AUTOCAD		X		
SOLIDWORKS				
SIGN		DATE		
DRAWN		8/22/07		
RPR		8/22/07		
CHECKED		JLAU 8/22/07		
ENGR.		8/22/07		
KSUM		8/22/07		
APPR.		8/22/07		
JLAU		8/22/07		
SIZE		DWG. NO.		
B		TC-1R5K-15A-44V		
REV		A		
UNLESS OTHERWISE SPECIFIED				
DIMENSIONING AND TOLERANCE PER ANSI Y14.5M				
ALL DIMENSIONS ARE IN INCHES AND [DIMETERS].				
TOLERANCE INCHES: ϕ = ±0.30"				
XXX = ±.005 XX = ±.015				
TOLERANCE METERS: ϕ = ±0.30"				
XXX = ±.127 XX = ±.38				
ANGLE PROJECTION 				
DO NOT SCALE DRAWING				