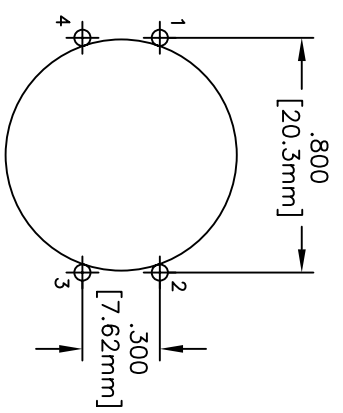
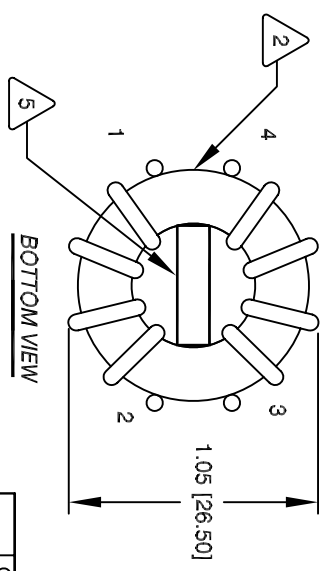
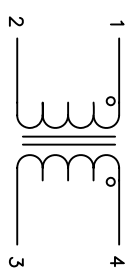
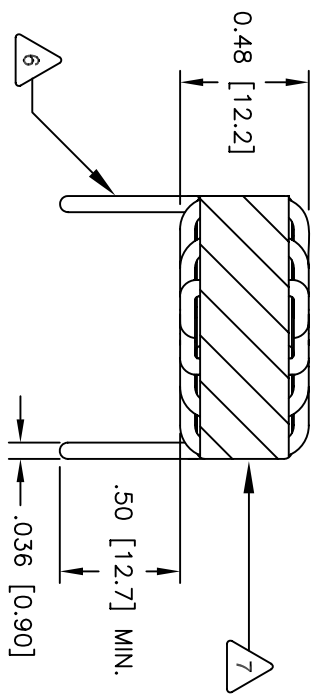


The information contained in this drawing is the sole property of CWS Coil Winding Specialist. Any reproduction in part or whole without written permission of CWS Coil Winding Specialist is prohibited.

REVISION HISTORY		SIGN & DATE				
REV	ECN	DESCRIPTION	BY	DATE	CHK	DATE
B		PRODUCTION RELEASE	RPR	4/13/05	JLJU	4/13/05
C		Changes to Dim & Wire Size	RL	6/10/08	JL	1/9/07
D1		Changes to Dim & Wire Size	KL	6/10/08	RL	6/10/08



8 Build to RoHS Compliance

7 WHERE SHOWN, USING A PERMANENT MARKING METHOD
MARK PART NUMBER AND REVISION
WRAP INDUCTOR WITH GLASS TAPE

6 TO THE CORE
MUST REST FLAT ON PCB). LEADS MUST BE TANGENT
FLUSH WITH THE CORE EDGE, AS SHOWN (I.E. COIL
REMOVE INSULATION AND TIN LEADS APPROX. 0.5 INCH

5 SPACER : UL 94-V0, NYLON 6/6
WIND BOTH COILS EVENLY SPACED
4 CONSTRUCTION:

INTER-WINDING CAPACITANCE = 15.30 pF
LEAKAGE INDUCTANCE = 10.5 uH
CURRENT RATING = 4.5 AMPS
DCR ON EACH WINDING = 20.0 MILLI-OHMS MAX
L = 1800 uH ± 30%, 10 KHz, 250 mV
3 SPECIFICATIONS:

2 WIRE: UL RECOGNIZED 155 °C OR 200 °C (PREFERRED) RATED MAGNET WIRE
CWS BYTEMARK OR OTHER APPROVED PART
CORE: COATED FERRITE TOROID, HIGH PERM MNZN

1 RATING CLASS B (130 °C MIN.) REQUIRED
MATERIAL: UL RECOGNIZED 94V-0 FOR FLAMMABILITY
NOTES: UNLESS OTHERWISE SPECIFIED, COMMON MODE CHOKE
READ FROM BOTTOM UP.

CODE IDENT	MFG. P/N	DESCRIPTION	ITEM NO.
AUTOCAD X		PARTS LIST	
SOLIDWORKS		COLLWS COM, INC	
SIGN	DATE	CWS Coil Winding Specialist	
		1510 E. Edinger Ave.	
		Unit B, Santa Ana, CA, 92705	
DRWN	DATE	TITLE:	
RPR	4/13/05	Common Mode Line Chokes	
ENGR.	4/13/05	SIZE	
KSUM	4/13/05	DWG. NO.	CM-182U-4.5A
APPR.	4/13/05	SCALE	2=1
JLJU	4/13/05	REV	D1
		SHEET	1 OF 1

UNLESS OTHERWISE SPECIFIED
DIMENSIONING AND TOLERANCE PER ANSI Y14.5M
ALL DIMENSIONS ARE IN INCHES AND [MILLIMETERS].
TOLERANCE INCHES: .XXX=±.005 .XX=±.015 .X=±0.30'
TOLERANCE METRICS: .XXX=±.127 .XX=±.38 .X=±.95
ANGLE PROJECTION DO NOT SCALE DRAWING